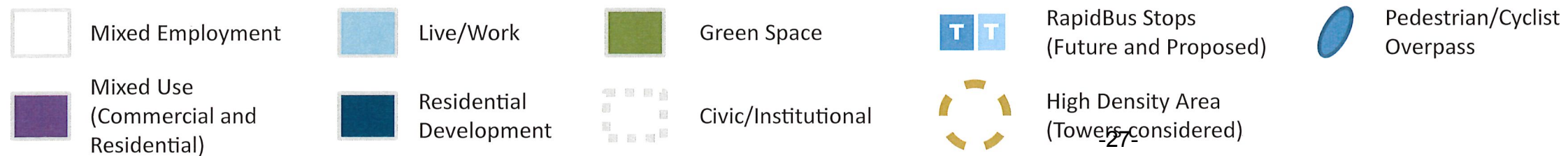
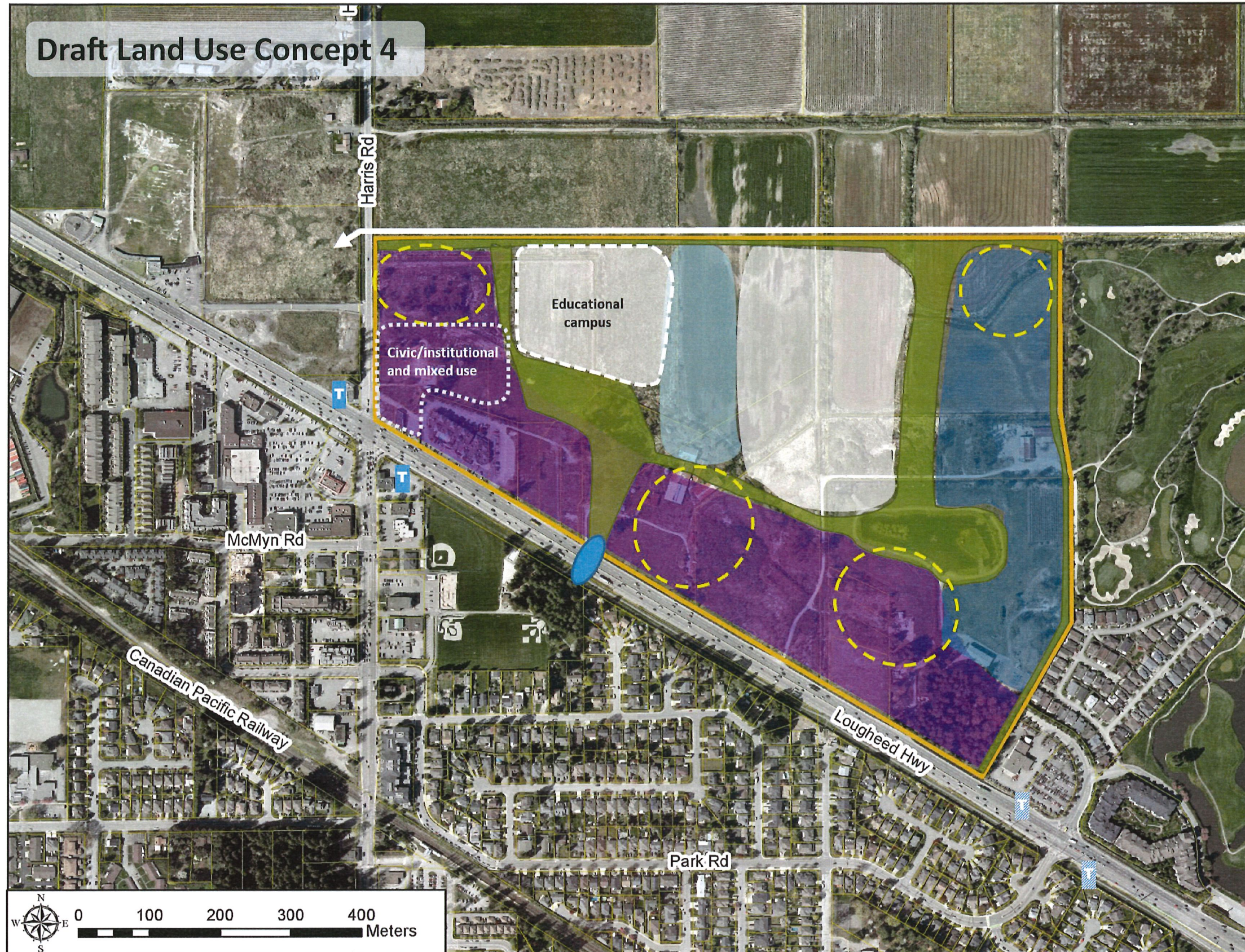


## Draft Land Use Concept 4



## Key features

- Open recreational green spaces beside more intense uses, connected with green corridors for habitat, storm water, and recreational trails;
- Four areas where towers will be considered:
  - separated to maintain views from Harris Road Park and nearby residential areas;
  - situated to maximize views.
- Civic, institutional, and educational uses:
  - close to proposed RapidBus stops and existing business areas;
- Live/work positioned as a 'High Street' between the education campus and mixed employment, anchored with a mixed use tower.

## Features common to all draft concepts:

- **Green space network**
- **Green belt** along northern edge to create an attractive edge and discourage speculation
- **Pedestrian/cyclist overpass** over Lougheed Highway to improve north-south connectivity
- **Most medium to high residential density** within walking distance of transit and existing businesses
- **Mixed use along Lougheed Highway** to increase housing choice and opportunities for local businesses
- Medium density **residential along the golf course edge** to incorporate views
- **Mixed employment area** to accommodate skilled employment, hospitality, and commercial recreation
- **Proposed RapidBus stops** at Meadow Gardens Way/Park Road