

Staff Report to Council

Community Services

FILE: 6520-20-2019-01

DATE: July 18, 2019

Date of Meeting – July 23, 2019

TO: Mayor and Council

FROM: Lisa Grant, Director of Community Services

SUBJECT: Radiocommunication Tower at 19675 Meadow Gardens Way: Consultation Protocol for the Placement of Radiocommunication and Broadcasting Antenna Systems

RECOMMENDATION(S): THAT Council:

- A. Direct Staff to draft a letter to Rogers Communications Inc. and ISED (Innovation, Science and Economic Development Canada) advising that the proposal is compliant with the consultation requirements as outlined in Council Policy C036 'Consultation Protocol for the Placement of Radiocommunication and Broadcasting Antenna Systems' AND,
- B. Forward a letter to the MP, MLA, Health Canada, and ISED (Innovation, Science and Economic Development Canada) addressing the health concerns raised by the community concerning 5G technology; OR
- C. Other.

CHIEF ADMINISTRATIVE OFFICER COMMENT/RECOMMENDATION:



PURPOSE

The purpose of this report is to confirm that the consultation process is complete and is in compliance with the City's Council Policy C036: Consultation Protocol for the Placement of Radiocommunication and Broadcasting Antenna Systems.

☐ Information Report

☐ Direction Report

☒ Decision Report

DISCUSSION

Background:

Rogers Communications Inc. (Rogers) has submitted an application to Innovation, Science and Economic Development Canada (ISED), formerly Industry Canada, to install a radiocommunications tower at 19675 Meadow Gardens Way. ISED requires that proponents intending to install certain types of radiocommunication towers to notify and consult with the local land-use authority and the local community.

Applicant:	Tawny Verigin (Cypress Land Services Inc.)
Owner:	Meadow Gardens Golf Course (1979) Ltd.
Civic Address:	19675 Meadow Gardens Way
Legal Description:	Lot 1 District Lots 223, 224, 246, 263, and 286 Group 1 and of Section 23 Township 9 NWD Plan BCP50365
PID:	028-794-702
Parcel Area:	65.5 ha (161.9 acres)
OCP:	Outdoor Recreation
OCP DPA:	#3—Outdoor Recreation Area
Zoning:	A-4 (Agriculture and Golf Course)

Cypress Land Services Inc. has applied, on behalf of Rogers, to the City for the installation of a radiocommunications tower at 19675 Meadow Gardens Way. Rogers is proposing an installation of a monopole wireless communications facility and fenced equipment area adjacent to the driving range on the southeast portion of the parcel adjacent to Golden Ears Way (Figure 1). The wireless antenna system will measure 36.5 metres in height, inclusive of a 1 metre lightning rod, and occupy an area of 6 by 8 metres (Attachment D).



Figure 1: Proposed Radiocommunication Facility Location

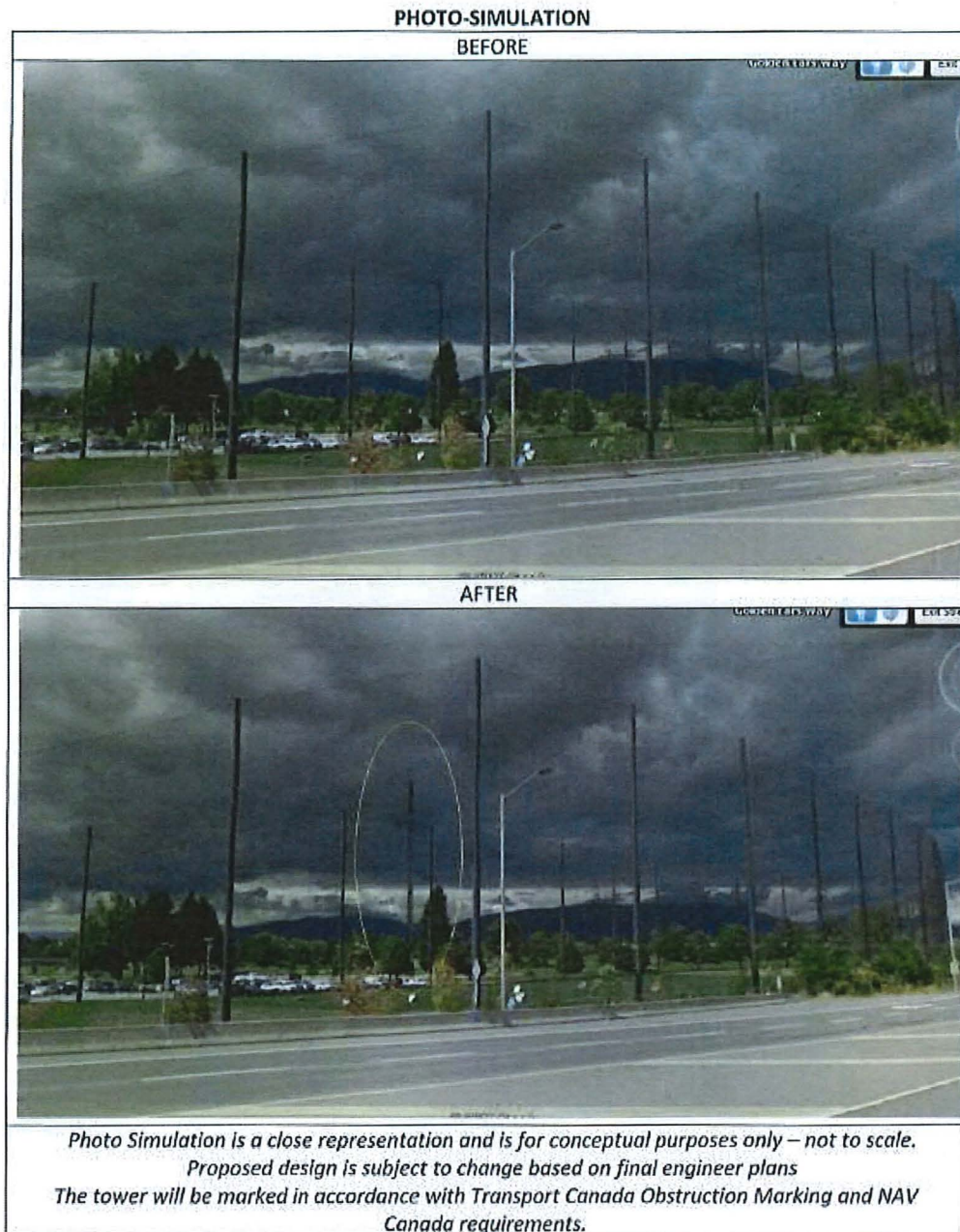


Figure 2: Photo Simulation of Proposed Radiocommunication Facility

Approving Authority

Canada's federal government has exclusive and comprehensive jurisdiction over the area of radiocommunication facilities. Innovation, Science and Economic Development Canada (ISED), formerly Industry Canada, is the federal department that is responsible for regulating radiocommunication in Canada, including authorizing the installation of radiocommunication towers and sites. The authority is derived from the *Department of Industry Act*, of which describes the powers and authorities of the department and the Minister. The *Radiocommunication Act* specifically provides ISED with the authority to approve radiocommunication facilities.

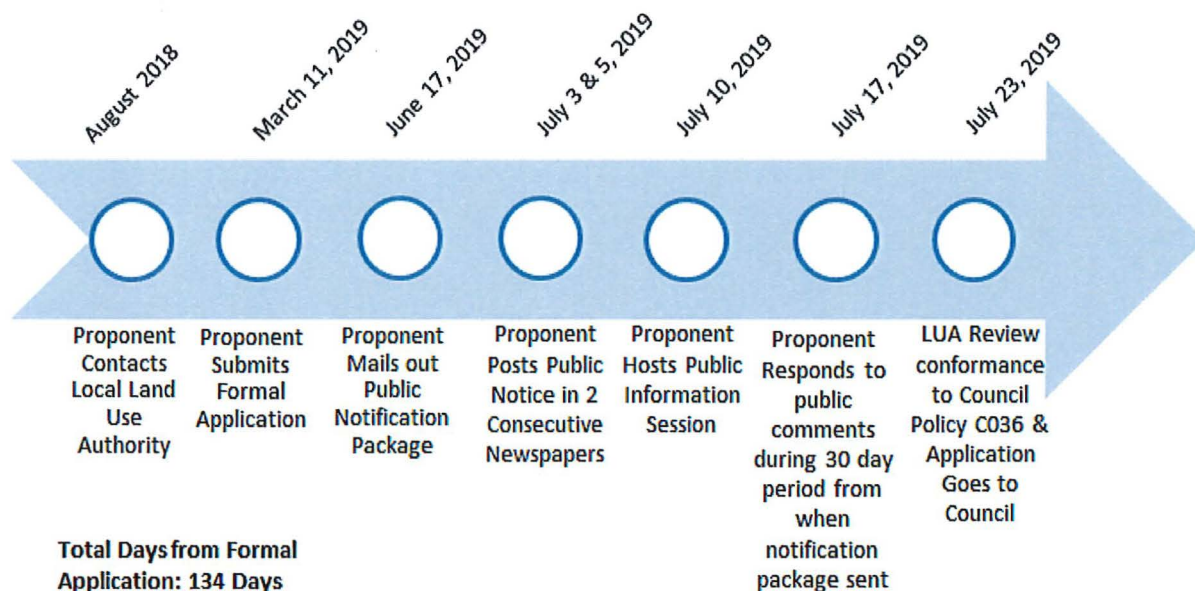
ISED takes the position, as authorized under the *Radiocommunication Act*, that the local land use authority (LUA) does not confer the right of veto in the location of a radiocommunication facility. Traditional municipal land use planning controls such as zoning bylaws, development approvals and building code requirements are rendered inoperative (i.e. the prohibition, restriction or regulation of land for the use of radiocommunication facilities are not under the authority of a municipality or other LUA).

Summary of Public Consultation Process

Proponents (the applicants) are required to meet certain criteria to consult with the local LUA. The *Radiocommunication Act* requires the proponent to contact the appropriate LUA to determine local requirements regarding antenna systems and undertake public notification and consultation, as per the LUA policy. Should the LUA not have a public consultation process in place, the proponent is required to follow the ISED default public consultation process. ISED requires 120 days for the public consultation to be complete, which begins once a formal application to the LUA has been made by the proponent.

Cypress Land Services Inc. on behalf of Rogers is required to respond to all comments made by the public. This is a requirement under ISED's Client Procedures Circulars (CPC)-2-0-03—Radiocommunication and Broadcasting Antenna System.

Below is a summary timeline of the public consultation process that Cypress Land Services Inc. and Rogers has fulfilled:



Council Policy C036: Consultation Protocol for the Placement of Radiocommunication and Broadcasting Antenna Systems

The City of Pitt Meadows adopted Policy C036: Consultation Protocol for the Placement of Radiocommunication and Broadcasting Antenna Systems in 2012 and reaffirmed in 2015 (Attachment E). The Policy recognizes that the City holds limited power for ensuring public consultation is adequate

and up to ISED standards. Cypress Land Services Inc. and Rogers are in compliance with Council Policy C036 thus far. A summary of the consultation process is summarized at the end of this report.

Supreme Court of Canada Case: Rogers v. Châteauguay

A summary of a Supreme Court of Canada case has been included in this report to illustrate the jurisdictional position of a municipality in matters relating to the approval of radiocommunication towers:

In 2008, Rogers informed Châteauguay (a suburb of Montreal) that it intended to build a telecommunications tower to fill gaps in its wireless coverage on a site the company had been renting since December 2007. The site was authorized by the industry Minister at the time but Châteauguay ultimately issued a notice of reserve, essentially blocking the project, saying that it was concerned for the health and safety of people living in the area.

Rogers argued that the notice was unconstitutional as it amounted to an exercise of federal power. Canada's parliament holds jurisdiction over radiocommunication. The Supreme Court ruled in favor of Rogers in a unanimous decision, overturning a previous Court of Appeal decision that the city had acted with legitimate municipal purpose to protect the welfare of its residents. In its majority opinion, the Supreme Court found that the notice was beyond the scope of Châteauguay's power. The majority opinion of the Supreme Court found that the Court of Appeal had erred in its finding that municipalities have a certain degree of power in determining the locations of telecommunications poles.

The court concluded that "the siting of antenna systems is part of the core of the federal power over radiocommunication and that any other conclusion would make it impossible for Parliament to achieve the purpose for which this power was conferred on it."

Managing Health Effects of Radiofrequency Electromagnetic Energy: Safety Code 6

City Staff do not have the expertise to make comments on potential health effects, if any, of the proposed Rogers radiocommunications tower. Rogers attests that the proposed radio antenna system described in the public notification package will (Attachment F), at all times, comply with Safety Code 6, which is explained below.

Health Canada is the regulatory authority that is committed to protecting the health and safety of all Canadians. Health Canada continues to carry out research into the possible health effects, monitor scientific literature related to such effects, and develop guidelines to protect Canadians from radiofrequency (RF) electromagnetic energy. Safety Code 6 is a guideline that recommends limits for safe human exposure to radiofrequency (RF) electromagnetic energy. Specifically, Safety Code 6 has established exposure limits which are designed to protect all Canadians for all age groups, including children, on a continuous 24 hours a day, seven days a week basis. In addition, Health Canada incorporates a safety margin of at least 50-fold against the occurrence of all established adverse health effects associated with exposure to RF energy.

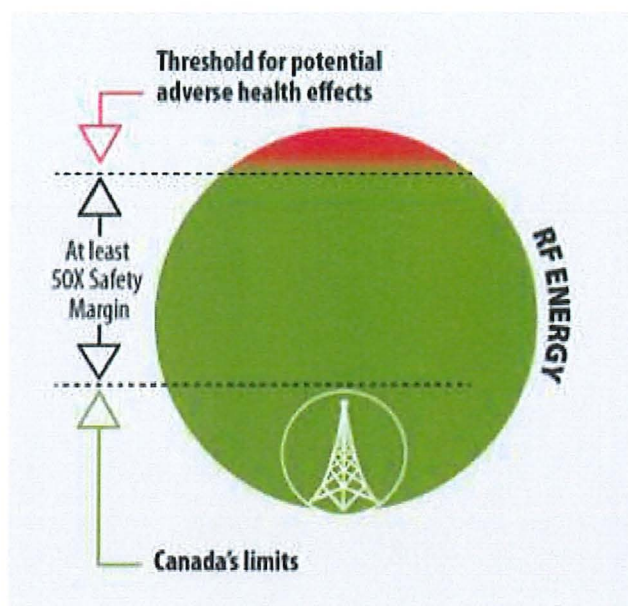


Figure 3: Health Canada's Safety Code 6 Safety Margins

Safety Code 6 is applicable to all radiocommunication facilities. The proposed Rogers radiocommunication tower is therefore required to meet RF electromagnetic energy exposure requirements as listed in Safety Code 6.

5G Network in Canada

The proposed Rogers radiocommunication tower is not 5G; however, correspondence with Cypress Land Services Inc. explains that once 5G is deployed out in Canada, Rogers will be permitted by ISED to install a 5G antenna on the proposed radiocommunication tower at 19675 Meadow Gardens Way.

The Communication Research Centre of Canada (CRC) is responsible for the research in bringing the 5G network to Canada. Currently, the 5G Network has not yet been deployed in Canada as further research is still required. It is expected that the rollout of 5G will be gradual, starting in 2020.

With the 5G network expected to rollout in Canada in early 2020, there is minimal information available to the public that discusses potential side effects to human health. The City recognizes the community's concern over the possible health effects from radiofrequency (RF) electromagnetic energy. Therefore, staff is recommending that the City forward a letter to the MP (Dan Ruimy), the MLA (Lisa Beare), Health Canada, and ISED addressing the health concerns raised by the community.

Relevant Policy, Bylaw or Legislation:

This issue is regulated by the *Radiocommunications Act* and Council Policy C036: Consultation Protocol for the Placement of Radiocommunication and Broadcasting Antenna Systems.

Summary of the Proponents Conformance to Council Policy C036:

Under certain circumstances, radiocommunication towers are exempt from public consultation; however, the current proposal is not exempt under ISED's policy or Council Policy C036. Therefore, this application is required to meet the guidelines contained within Policy C036 with respect to site selection

and tower location, design criteria, and public consultation. The following is a summary of the guidelines and how the proponent adhered to them.

Development Guidelines

Staff comments are in italics.

Site Selection and Siting

The policy encourages that the site selection for a new antenna systems be co-located on existing facilities or on a building within a radius of 500 metres of the proposed location.

The proposed wireless antenna is not co-located with other antennas nor is it proposed to be placed on an existing building or structure. Rogers investigated nearby buildings and structures but found there are no suitable options for co-location (Attachment G). In addition, the closest existing tower is over 1 kilometre away, which is too far from where Rogers needs to add service. The proponent identified that there are no other feasible options for the co-location of the proposed wireless antenna within 500 metres.

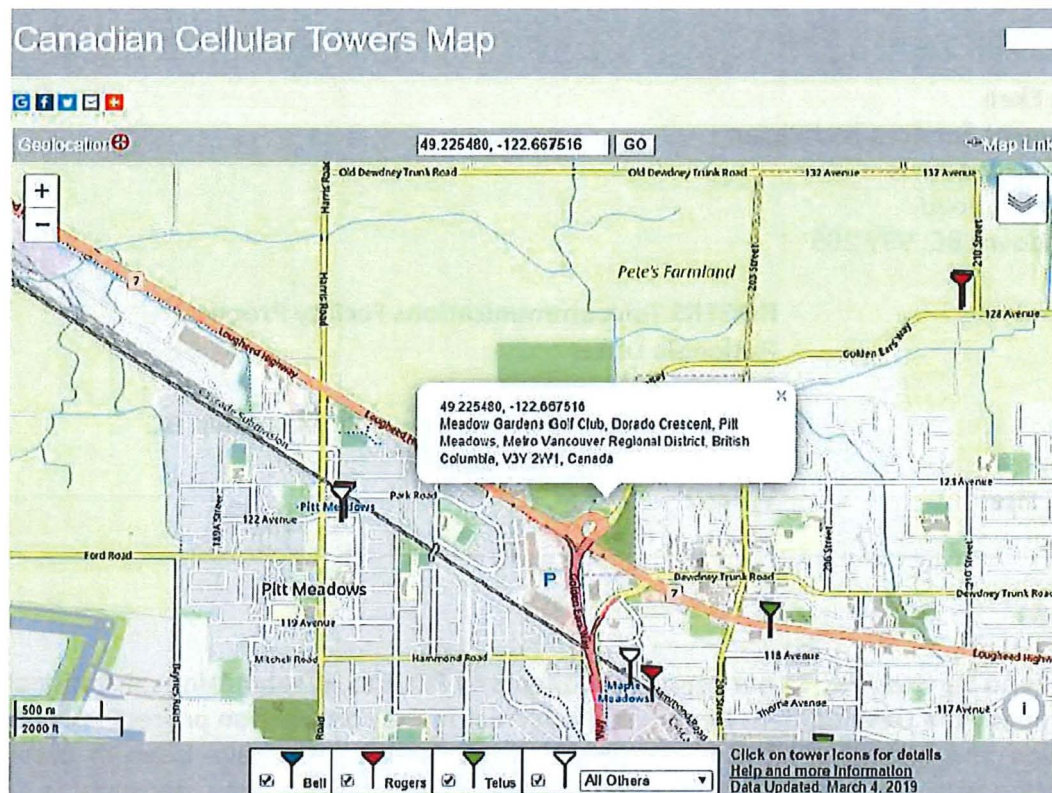


Figure 4: Location of other radiocommunication towers

The policy recommends that the site selection of proposed wireless antennas not be located on lands that are listed on the City's heritage register, on any lands identified with archaeological evidence, municipal parks or any environmentally sensitive areas, riparian areas, dike right-of-ways, or areas within 120 metres of any elementary or secondary school.

The proposed wireless antenna is proposed be located adjacent to the existing driving range on Meadow Gardens Golf Course, which is not near or on the City's heritage register, archaeological sites, municipal parks, environmentally sensitive areas, right-of-ways, or within 120 metres of an elementary or secondary school. The proposed radiocommunications tower is located approximately 60 metres away from a watercourse. The proposed site is not listed as critical habitat on the City's mapping system. In addition, ISED is required to comply with appropriate environmental legislation, including the Canadian Environmental Assessment Act. Rogers attests that the proposed radiocommunication tower will comply with all applicable environmental legislation. The closest school is Edith McDermott Elementary, which is approximately 890 metres away.

The policy directs the siting of new radiocommunication facilities to be sited at least its height away from adjacent property lines and should not be erected in the front yard.

The wireless antenna is located nearly twice its height away from the closest property line to the west and is not erected in the front yard.

Design Criteria

The policy encourages that wireless antennas and towers are sympathetic to the surrounding architecture and built form (including maintaining an appropriate distance from houses).

The proposed wireless antenna is located on a golf course. The closest homes are directly east (in Maple Ridge) and are roughly 160 metres away from the antenna. The properties to the north are all agricultural, to the south are commercial, and to the west are agricultural and some residential (Attachment A, B, and C).

The policy also encourages stealth design techniques such as hiding wireless antennas within structures. Where appropriate wireless antennas should be landscaped and fenced between adjacent land uses.

Stealth design techniques are not proposed in this proposal. The proponent explains that the design of the pole is intended to blend in with the driving range poles that hold up the netting for the driving range. The wireless antenna will be fenced.

Public Consultation

The proponent is required to send out notifications to surrounding property owners. 30 days are required for the public to make comments.

The proponent mailed out a public information package in accordance with the City's Policy. The site selected is zoned A-4 (Agriculture and Golf Course), thus the proponent was required to do a mail out to residences within 488 metres (1,601 feet). As this property borders the City of Maple Ridge, the mail out was sent out residences in Pitt Meadows and Maple Ridge that were within the 488 metre radius. Notice was sent out June 17, 2019 and the proponent has given 30 days for public comment. The mail out package is included as Attachment F.

A public notice is required to be published in two consecutive newspaper editions of the local newspaper.

The public notices were published in the Maple Ridge and Pitt Meadows Times on Tuesday July 3 and Friday July 5. The notices have been included as Attachment H.

The proponent is required to acknowledge receipt of concerns and provide a response, in writing, to all concerns. The proponent is required to make available all public comments and responses to the City.

The public's comments and the proponent's responses are compiled in Attachment I.

The proponent is required to host a public information meeting. The public information meetings are to be held mid-week evenings and held prior to the application proceeding to Council.

The proponent hosted a public information meeting on Wednesday July 10, 2019 from 5:00-7:00 pm at the Meadow Gardens Golf Course. A notice appeared in two consecutive issues of the local newspaper on Wednesday July 3 and Friday July 5 (Attachment H).

COUNCIL STRATEGIC PLAN ALIGNMENT

- ☒ Corporate Excellence ☐ Economic Prosperity ☐ Community Livability
☐ Transportation & Infrastructure ☐ Not Applicable

Engage stakeholders in a meaningful dialogue.

FINANCIAL IMPLICATIONS

- ☒ None ☐ Budget Previously Approved
☐ Other ☐ Referral to Business Planning

PUBLIC PARTICIPATION

- ☒ Inform ☒ Consult ☐ Involve ☐ Collaborate ☐ Empower

Comment(s):

The proponent is required to inform and consult the public as per the *Radiocommunications Act* and Council Policy C036: Consultation Protocol for the Placement of Radiocommunication and Broadcasting Antenna Systems. The proponent sent out an information package to residences within 488 metres of the subject site and hosted a public information meeting on July 10, 2019.

KATZIE FIRST NATION CONSIDERATIONS

Referral ☐ Yes ☒ No

SIGN-OFFS

Written by: Stefanie Ekeli

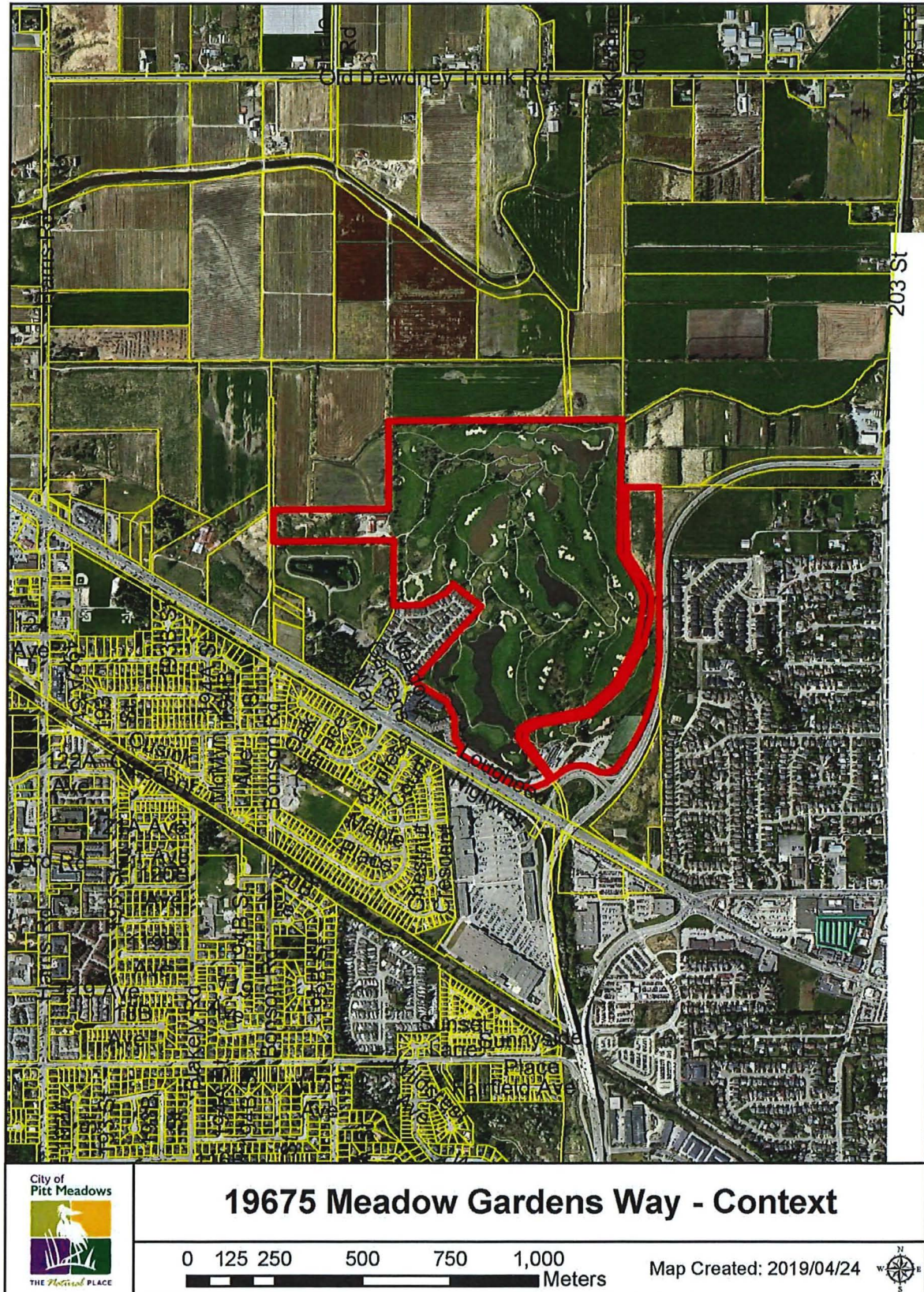
Reviewed by: Alex Wallace

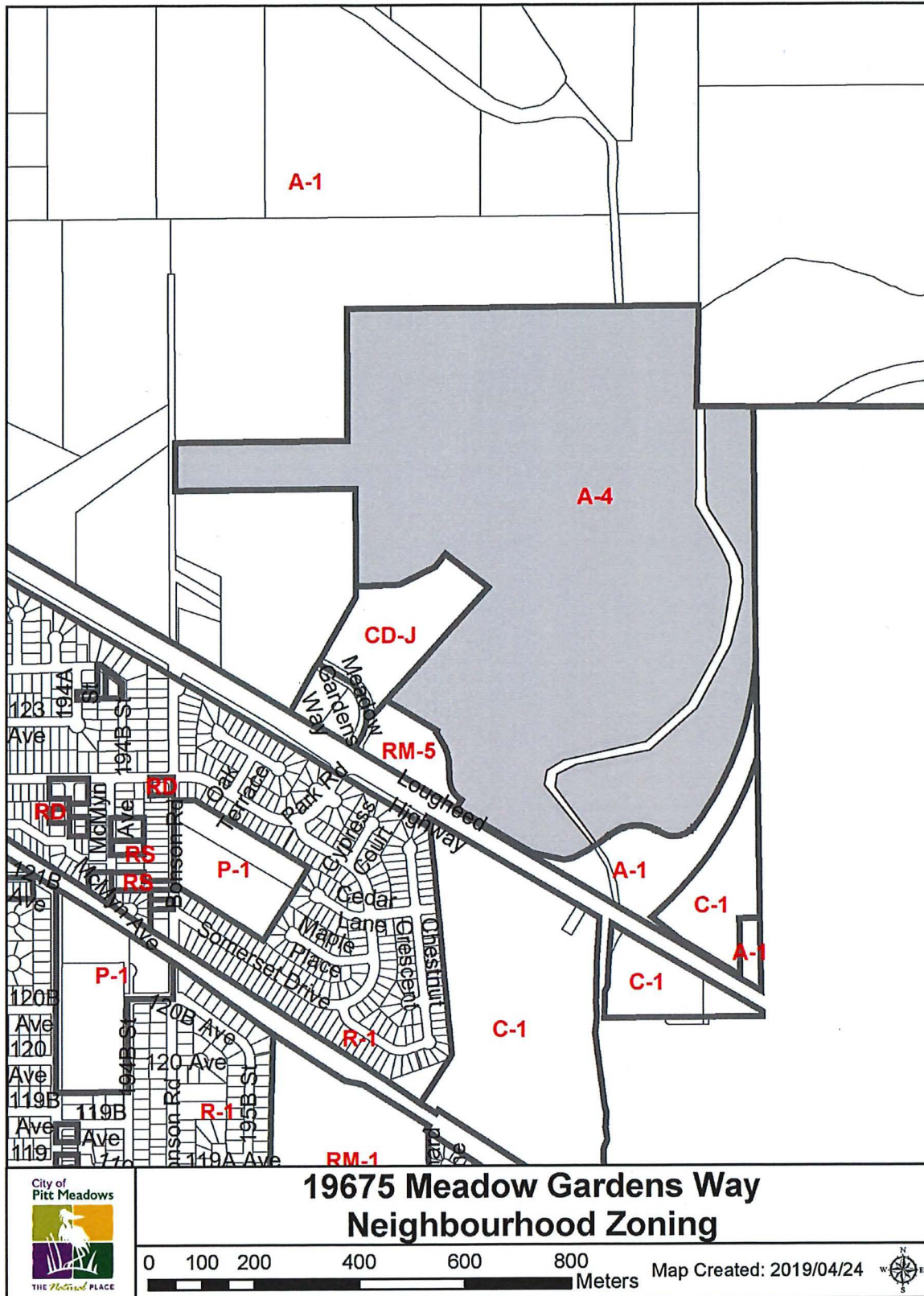
Development Services Technician

Manager of Community Development

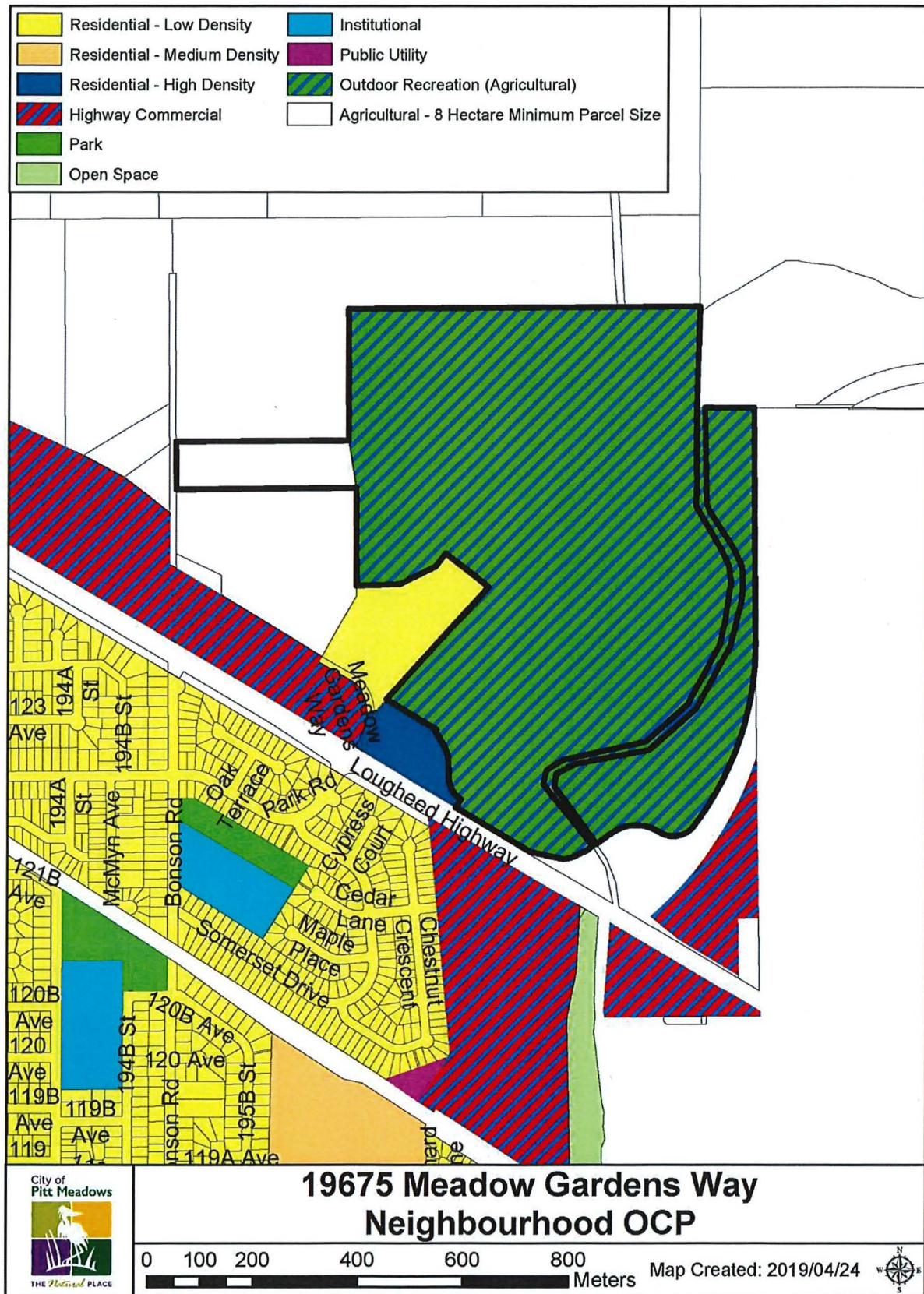
ATTACHMENT(S):

- A. Subject Site Map
- B. Zoning Map
- C. Official Community Plan Map
- D. Site Plan of radiocommunication tower
- E. Council Policy C036 Consultation Protocol for the Placement of Radiocommunication and Broadcasting Antenna Systems
- F. Mail-out package to property owners dated June 17, 2019
- G. Rogers' rationale for the need and chosen location of proposed wireless antenna
- H. Public notices published in the Maple Ridge and Pitt Meadows Times
- I. Public's comments and the proponent's responses

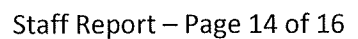


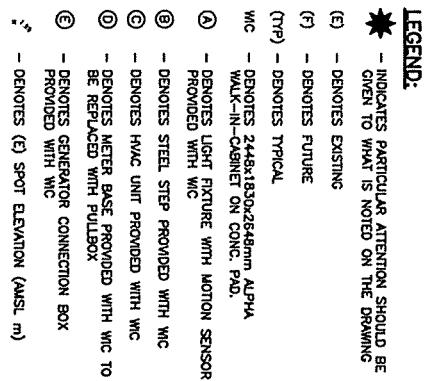


ATTACHMENT C: Official Community Map



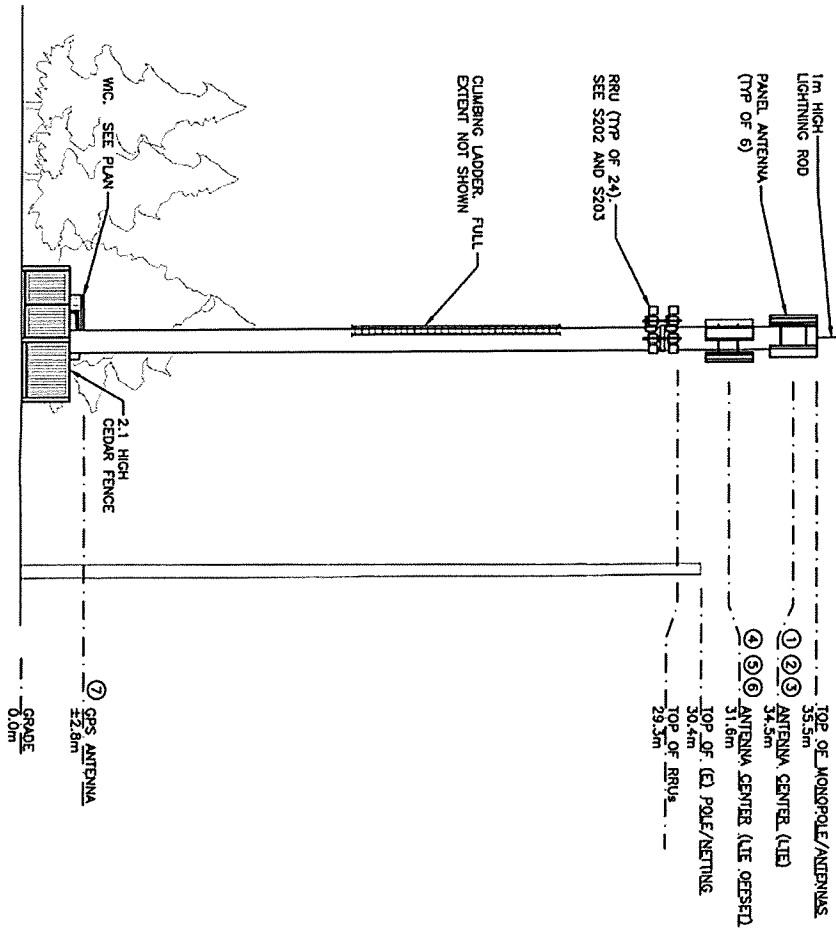
-137-



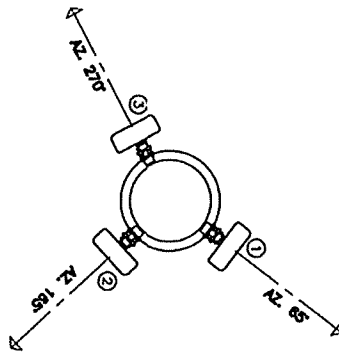


S301 / 1:75

		ISSUED FOR CLIENT REVIEW
2019.01.30		
2018.07.12		ISSUED FOR CLIENT REVIEW
No.:	Date:	Description:
Revisions:		
Date:	JUL 2018	Drawing:
Scale:	1/75	S302
Drawn:	CW	
Checked:	CS	
Project:	2018152	
	Of	



1 SOUTH ELEVATION
1:200



2 ANTENNA LAYOUT
1:50
(LTE @ 34.5m)

- LEGEND:**
- ★ - INDICATES PARTICULAR ATTENTION SHOULD BE GIVEN TO WHAT IS NOTED ON THE DRAWING
 - ① - DENOTES ANTENNA POSITION, SEE S202
 - (E) - DENOTES EXISTING
 - (F) - DENOTES FUTURE
 - (TYP) - DENOTES TYPICAL
 - ACL - DENOTES ABOVE GRADE LEVEL



CS-Sayers
ENGINEERING LTD.
1861 West 5th Avenue
Vancouver, BC V6J 1K5
Tel: 604.734.8822
Fax: 604.734.8823
www.cs-sayers.com

ROGERS
Project: **GOLDEN EARS WAY AND LOUGHEED**
Site ID: **W4462**
19675 MEADOW GARDENS WAY, PITT MEADOWS, BC
Sheet Title: **SOUTH ELEVATION AND ANTENNA LAYOUT**

Date:	JUL 2018	Drawing:	
Scale:	AS NOTED		
Drawn:	CV		
Checked:	CV		
Project:	218152	Of	
S401			

No.:	2019.01.30	ISSUED FOR CLIENT
Date:	2018.07.12	ISSUED FOR CLIENT
Revisions:		Description:



COUNCIL POLICY C036

13 - Planning & Development

Consultation Protocol for the Placement of Radiocommunication and Broadcasting Antenna Systems

Effective Date: June 5, 2012
 Reaffirmed Date: July 3, 2012
 Reaffirmed Date: July 21, 2015

1.0 Background

1.1 Purpose

The purpose of this Policy is to govern the public consultation process for radiocommunication structures not exempt from a municipal review and to set a process by which applications for radiocommunication towers and antennas are reviewed in the City.

1.2 Jurisdiction

Under the Radiocommunication Act, the federal government has jurisdiction over interprovincial and international communication facilities. Industry Canada has been granted the authority to approve and license the location of radiocommunication facilities. Other applicable legislation include: the Canadian Environmental Assessment Act and Health Canada, Safety Code 6 (Limits of Human Exposure to Radiofrequency Electromagnetic Fields in the Frequency Range from 3 KHZ to 300 GHZ, 1999).

1.3 Exemptions

Industry Canada requires that proponents intending to install or modify certain types of radiocommunication structures notify and consult with the local land use authority and the local community in the vicinity of the proposed structures. However, Industry Canada exempts the following proposals from the requirement to consult with municipal governments:

- a) Maintenance of existing radio apparatus including the antenna system, transmission line, mast, tower or antenna-supporting structures.
- b) Addition or modification of an antenna system (including improving the structural integrity of its integral mast to facilitate sharing), provided that the addition or modification does not result in an overall height increase above the existing structure of 25%.

3.0 Public Consultation

3.1 Public Notification and Consultation Requirements

When a radiocommunication proposal is not exempt in accordance with Section 1.3 public notification and consultation should occur in accordance with the following:

- a) For radiocommunication towers proposed in an urban area, the City will forward a list of all property owners within a radius of 122 meters (400 feet) or three times the height of the proposed tower, whichever is greater. The radius is measured from the tower base or the outside perimeter of the supporting structure, whichever is greater.
- b) For radiocommunication towers proposed in agricultural or rural areas, the City will forward a list of all property owners within a radius of 488 meters (1,601 feet). A radius is measured from the property lines of the property on which a tower is proposed.
- c) Notification must include, but need not be limited to:
 - proposed antenna purpose, the reasons why existing antenna systems or other infrastructure cannot be used, a list of other structures that were considered unsuitable and future sharing possibilities for the proposal;
- d) The proponent will be responsible for hand delivering or mailing a notification package to the public including property owners and tenants, community associations, businesses, public institutions, schools, and other organizations located within the notification area. Notification must provide all information on how to submit comments to the proponent in writing. The proponent must also provide a copy of the notification package to the City and the local Industry Canada office at the same time as the package is provided to the public.
- e) The proponent must ensure that at least 30 days are provided for public comments.
- f) A public notice with information about the proposal shall also be advertised in two consecutive editions of a local newspaper. The minimum size of an ad shall be 7.6 cm by 17.8 cm (3" x 7") excluding a map. A notice shall include the name of the proponent, a site plan with the proposed location, type and design of the proposed radiocommunication facility, and information about means of providing public input.
- g) A copy of the public notice shall also be provided to City staff and each member of Council. For proposals in urban areas, the notification package might be placed on the City's web page during 30 days of notification timeframe.



- h) If public express any concerns about the proposal and provide input about the proposal, the proponent is required to acknowledge the receipts of the comment within 14 days.
- i) The proponent will address in writing all reasonable and relevant concerns within 60 days of receipt. The concerned party will have 21 days from the date of the correspondence to reply to the proponent's response. The proponent will make available all public comments and responses to the City.
- j) The consultation process will be completed within 120 days from the receipt of the formal consultation request.

3.2 Public Information Meeting Requirements

The proponents of new radiocommunication structures located within an urban area not exempted under Sections 1.3 are required to host a Public Information Meeting as per the following requirements:

- a) Public information meeting notices shall be delivered at least two weeks in advance of the meeting as per the notification area identified in Section 3.1 (a) of the Protocol.
- b) Public information meeting notices shall include details pertaining to the date, time, and location of the meeting.
- c) A notice shall appear in at least two consecutive issues of a local newspaper, the last publication to appear not less than three and not more than ten days prior to the meeting. The minimum size of an ad shall be 7.6 cm by 17.8 cm (3" x 7") excluding a map.
- d) Meetings are to be held mid-week evenings, in a central, easily identifiable location, and should be open for at least two hours.
- e) The meeting must be held prior to the application proceeding to Council in Committee.
- f) All costs related to the meeting are to be assumed by the applicant.
- g) The list of all meeting attendees and a summary of all comments or inquiries received by the proponent about the proposal need to be provided to the Planning Department prior to submitting a report to Council. In turn, the City will provide a copy of public comments that staff received to allow the proponent an opportunity to respond.

4.0 Approval Process

4.1 Council Role

After the proposal is reviewed by Council, a letter will be sent to the proponent and Industry Canada. The letter will confirm if the proposal:

- a) conforms with the public consultation requirements as outlined in this Policy. A letter will also include expiry date for project commencement based on two years deadline from the Council approval.
- b) does not conform with the City's requirements as set out in the Policy.

4.2 Final Approval

If Industry Canada supports the proposal, the applicant can proceed with the following:

- a) Building Permit application, if necessary.
- b) If the radiocommunication facility is proposed on City property, the applicant must enter into a signed agreement with the City which will include payment of rent. Terms of duration will be determined at the time of contract negotiation. The agreement shall include clauses related to indemnification and proof of comprehensive liability insurance coverage, termination and removal of equipment.

The City will retain the right to end the rental agreement on 180 days notice for the following reasons:

- i. Should any valid concerns arise in the future;
- ii. Should the site be scheduled for redevelopment.

4.3 Cease of Operation

The carrier shall notify the City of its intent to abandon a radiocommunication facility no less than 30 days prior to abandonment.

5.0 Definitions

Antenna – an exterior transmitting device used in telecommunications designed for various uses such as telephonic, radio, or television by sending and/or receiving radio signals.



CITY OF
Pitt Meadows
The *Natural* Place

Co-location - the installation of multiple antenna systems on a building or tower facility by two or more proponents.

Proponent - the wireless communication company or companies

Telecommunication tower - a facility used to support one or more antennas for the purpose of radio telecommunications, and which include, but is not limited to, a guyed tower, a self-support tower or monopole tower, and which may be located at ground level or on the roof top.

Radiocommunication facility - see antenna and telecommunication tower.



ATTACHMENT

F



Public Consultation Package – Wireless Communications Site

Rogers Site: W4462 – Golden Ears Way & Lougheed

Location: 49.225480° N, 122.667516° W

You are invited to a Public Information Meeting (drop in format):

Date: Wednesday, July 10, 2019

Time: 5:00pm – 7:00pm

Location: Meadow Gardens Golf Course located at
19675 Meadow Gardens Way, Pitt Meadows, BC

Contact

Rogers Communications Inc.
c/o Cypress Land Services, Attn: Tawny Verigin
Agents to Rogers Communications Inc.
Suite 1051 - 409 Granville Street
Vancouver, BC V6C 1T2
Telephone: 1-855-301-1520
Fax: 604-620-0876
Email: publicconsultation@cypresslandservices.com

June 17, 2019



Suite 1051, 409 Granville Street, Vancouver, BC V6C 1T2
Phone: (604) 620-0877 Toll Free: (855) 301-1520 Fax: (604) 620-0876

Purpose of the Notice

This notification package is an invitation for the public to provide comments regarding a proposed wireless communication site to be located at the Meadow Gardens Golf Course at 19675 Meadow Gardens Way, Pitt Meadows, BC (PID: 002-998-581), coordinates: N 49.225480°, W 122.667516°.

Introduction

Rogers Communications Inc. ("Rogers") strives to improve coverage and network quality to remain the leading wireless provider in Canada. Rogers has identified a suitable site in order to provide dependable wireless data and voice communication services to generally within the following boundaries: North to 128th avenue, South to Hammond Road, West to Bonson Road and East to 203rd street.

Rogers is proposing an installation which consists of a monopole wireless communications facility and fenced equipment area adjacent to the driving range on the Southeast portion of the parcel adjacent to Golden Ears Way. Once completed the antenna system will measure 36.5 metres in height (inclusive of a 1.0 metre lightning rod) and occupy an area of 6.0 by 8.0 metres. Innovation, Science and Economic Development Canada (ISED), formerly Industry Canada, is responsible for the approval of this antenna system and requires Rogers to consult with the nearby public and local municipality. After reviewing this proposal, the City of Pitt Meadows will make its recommendation to ISED and Rogers.

The antenna system will be located here:



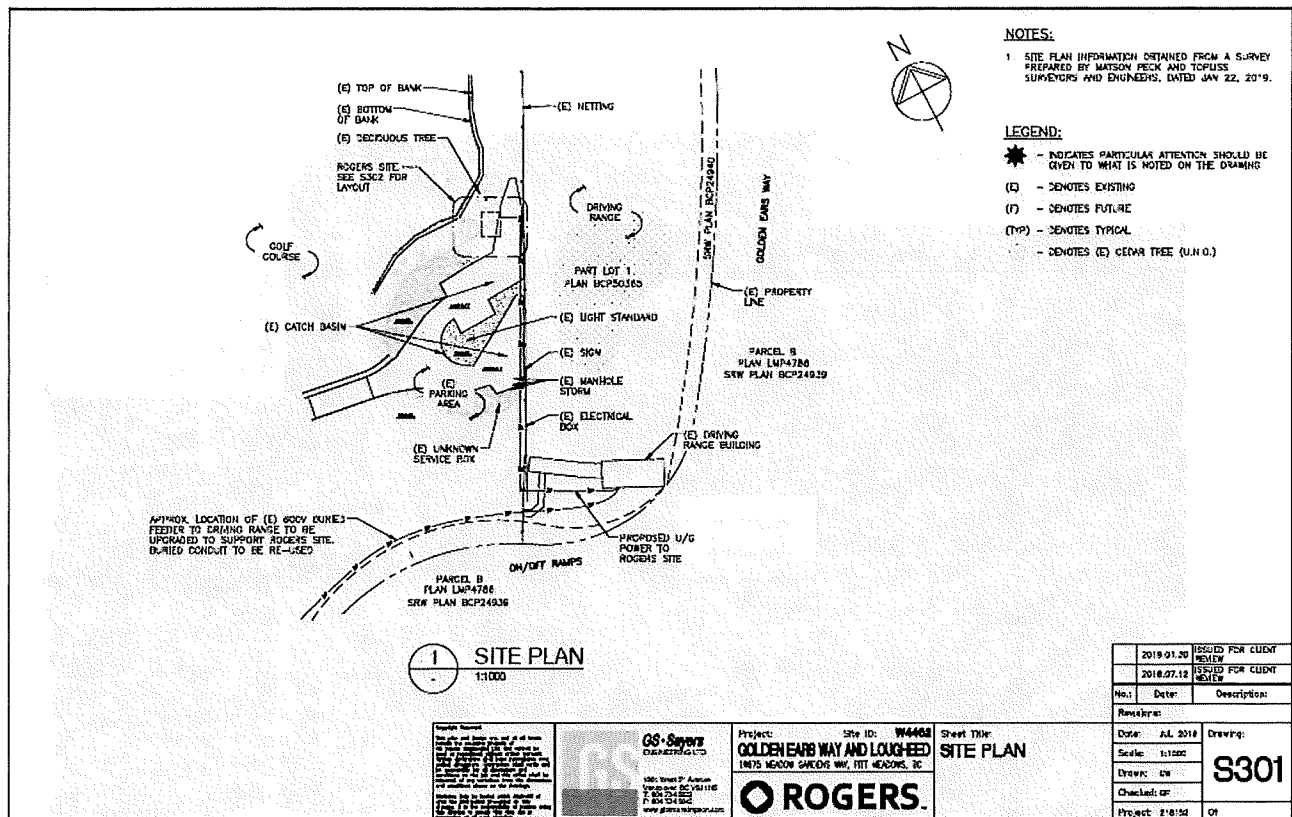
Network Requirements and Site Selection

Rogers seeks to provide high quality, dependable wireless communications services and continually upgrades its network to ensure a high level of wireless service. When a telecommunications carrier is determining a location for a new wireless installation it must consider a number of factors to ensure the new installation operates effectively and results in reliable wireless services for the immediate community. Some of the considerations include frequency of operation, local topography, patterns of wireless users, building heights, road patterns, availability of land and existing structures.

Rogers investigated the area for collocation options on nearby tower sites and unfortunately there are no nearby structures to utilize. Similarly, there are no buildings of adequate height to accommodate an antenna installation. The existing driving range poles do not meet the structural requirements to add antenna equipment to the top.

Details of the Proposed Tower

Rogers has completed preliminary design plans and a photo-simulation. These preliminary design plans are subject to final engineered design, land survey and approval of Transport Canada. The Photo-Simulation is a close representation and is for conceptual purposes only. Applications to both Nav Canada and Transport Canada have been submitted; comments are pending.



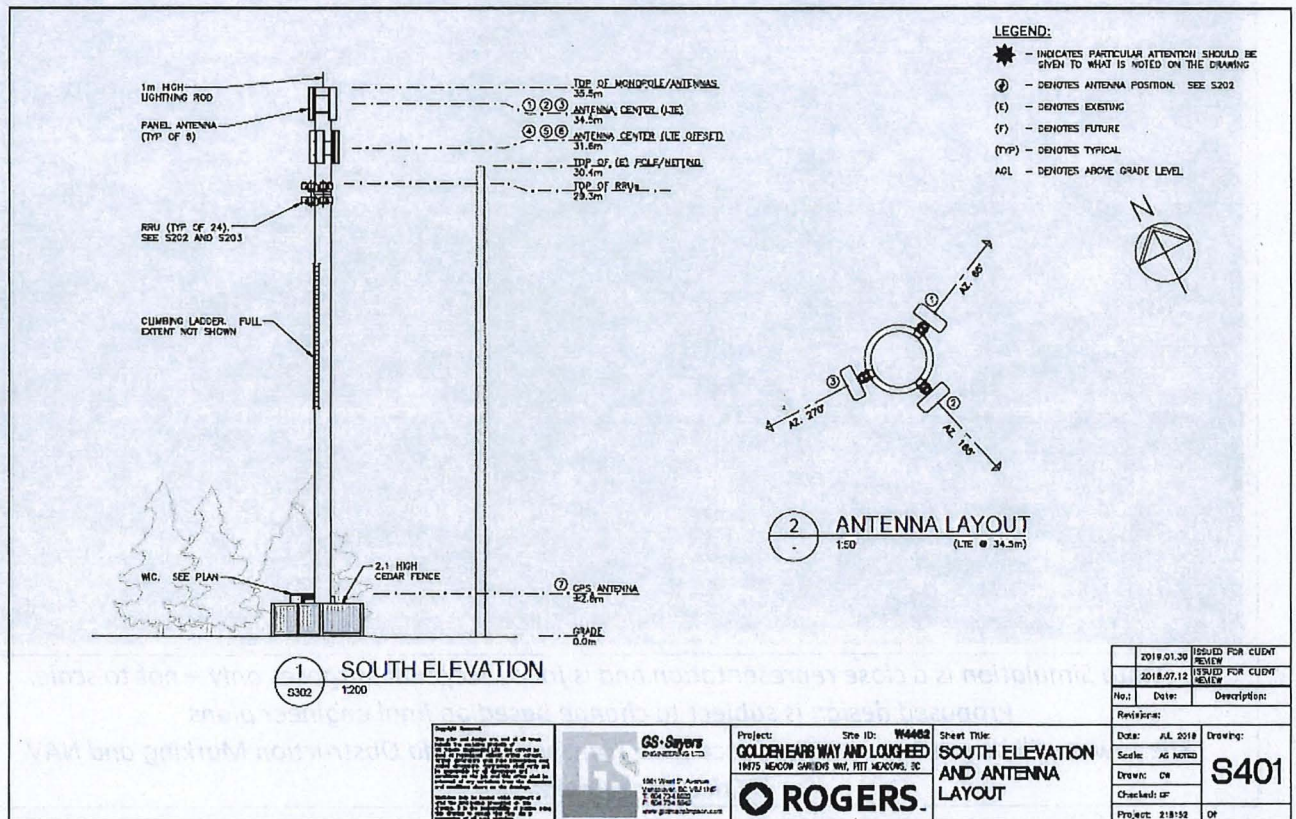
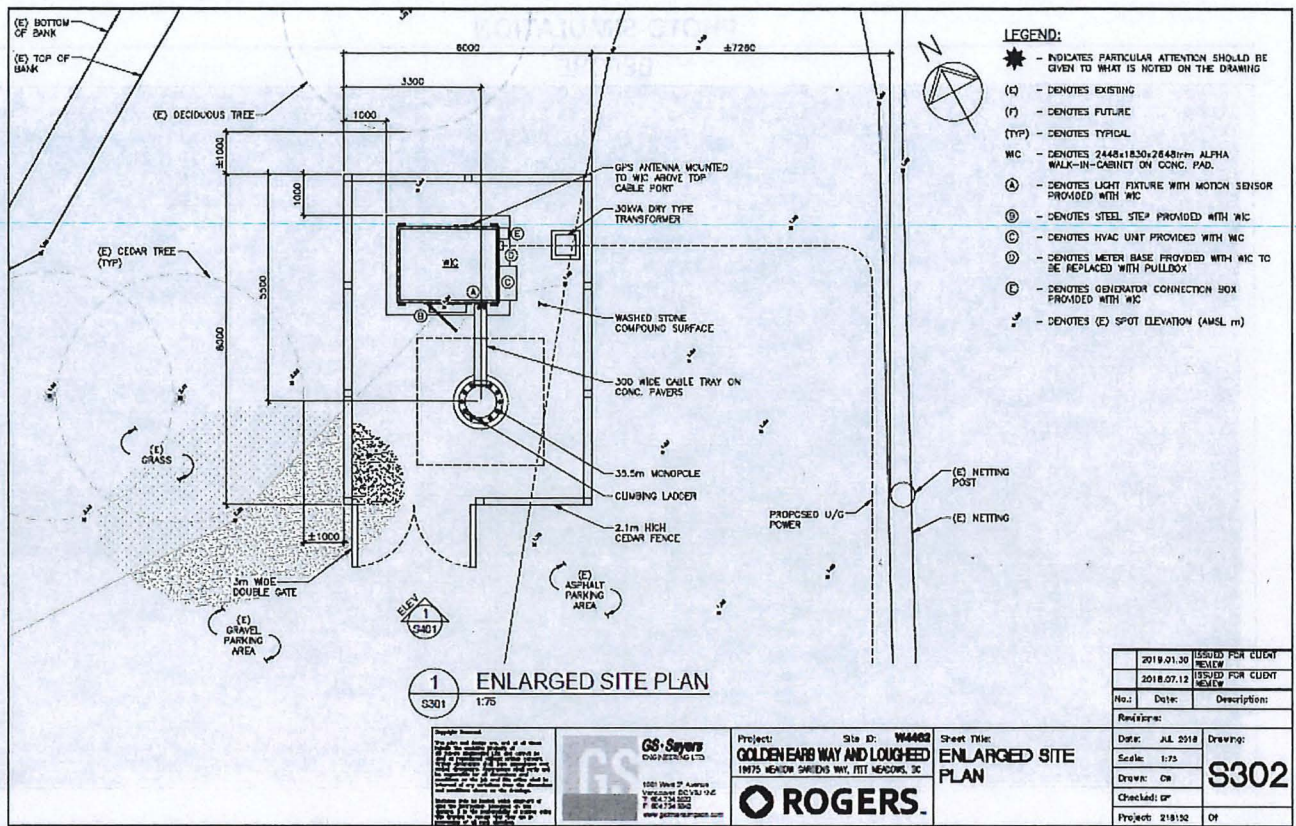


PHOTO-SIMULATION

BEFORE



AFTER



*Photo Simulation is a close representation and is for conceptual purposes only – not to scale.
Proposed design is subject to change based on final engineer plans
The tower will be marked in accordance with Transport Canada Obstruction Marking and NAV
Canada requirements.*

Health Canada's Safety Code 6 Compliance

Health Canada is responsible for research and investigation to determine and promulgate the health protection guidelines/limits for exposure to electromagnetic energy. Accordingly, Health Canada has developed a guideline entitled "Limits of Human Exposure to Radiofrequency Electromagnetic Field in the Frequency Range from 3kHz to 300 GHz – Safety Code 6". Canada's exposure limits are among the most stringent guidelines that are based on established effects.

ISED, under its authority, has adopted Safety Code 6 for the protection of the general public. As such, ISED requires all proponents and operators to ensure that their installations comply with the Safety Code 6 at all times.

Rogers attests that the radio antenna system described in this notification package will at all times comply with Health Canada's Safety Code 6 limits, as may be amended from time to time, for the protection of the general public including any combined effects of additional carrier co-locations and nearby installations within the local radio environment.

More information in the area of radiofrequency exposure and health is available at the following web site:

<https://www.canada.ca/en/health-canada/services/environmental-workplace-health/reports-publications/radiation/safety-code-6-health-canada-radiofrequency-exposure-guidelines-environmental-workplace-health-health-canada.html>

Transport Canada's Aeronautical Obstruction Marking Requirements

Rogers attests that the radio antenna system described in this notification package will comply with Transport Canada / NAV Canada aeronautical safety requirements. Rogers will make all necessary applications to Transport Canada and NAV Canada. Comments are pending. For additional detailed information, please consult Transport Canada at:

http://www.tc.gc.ca/eng/civilaviation/regserv/cars/part6-standards-62119-2447.htm#2_2

Canadian Environmental Assessment Act

ISED requires that the installation and modification of antenna systems be done in a manner that complies with appropriate environmental legislation, including the Canadian Environmental Assessment Act. Rogers attests the installation proposed will comply with the Environmental Assessment Act requirements.

Engineering Practices

Rogers attests that the radio antenna system described in this notification package will be constructed in compliance with the National Building Code of Canada and comply with good engineering practices including structural adequacy. The structure will not be constructed to facilitate additional user equipment.

ISED's Spectrum Management

Telecommunication providers are required by Innovation, Science, and Economic Development Canada (ISED), formerly Industry Canada, to consult with the local municipality and the general public regarding new installations. Rogers is committed to meaningful consultation with the City of Pitt Meadows and the public. The City of Pitt Meadows has adopted

Council Policy C036 - Consultation Protocol for the Placement of Radiocommunication and Broadcasting Antenna Systems. The purpose of this Policy is to govern the public consultation process for radiocommunication structures not exempt from a municipal review and to set a process by which applications for radiocommunication towers and antennas are reviewed in the City.

This letter provides written notification to adjacent landowners and stakeholders with an opportunity to engage in reasonable, relevant, and timely communication regarding this proposal. You have received a copy of this notification package because your property, or a property you have an interest in, is located within 488.0 metres or less from the proposed installation. The closing period for written comments regarding the proposal is July 17, 2019. Any inquiries that are received as a result of this notification will be logged and submitted to the City as part of our application process.

To obtain more information please contact the proponent as per the contact details below, or attend the Public Information Meeting (drop in format) that will be held on Wednesday, July 10, 2019 from 5:00pm – 7:00pm at the Meadow Gardens Golf Course located at 19675 Meadow Gardens Way, Pitt Meadows, BC.

Closing Date for Submission of Written Public Comments

Rogers will respond to all reasonable and relevant concerns. The City will be taking into account comments from the public and the proponent's response to each when providing its position to the proponent and ISED.

ISED's rules contain requirements for timely response to your questions, comments or concerns. We will acknowledge receipt of your communication within **14 days** and will provide a formal response to the Municipality and those members of the public who communicated to Rogers, within **60 days**. The members of the public who communicated with Rogers will then have **21 days** to review and reply to Rogers a final response.

Local ISED Lower Mainland District Office

13401 – 108 Avenue, Suite 1700, Surrey, BC V3T 5V6

Tel: 604-586-2521 | Fax: 604-586-2528

Email: ic.spectrumsurrey-surreyspectre.ic@canada.ca

(By appointment only)

Proponent's Contact Information

Rogers c/o Cypress Land Services, Attn: Tawny Verigin

Agents to Rogers

Suite 1051, 409 Granville Street, Vancouver, BC V6C 1T2

Tel: 604-620-0877 | Fax: 604-620-0876

Email: publicconsultation@cypresslandservices.com

Local Government Contact Information

Dana K. Parr | Planner II

City of Pitt Meadows

12007 Harris Rd, Pitt Meadows, BC V3Y 2B5

Tel: 604-465-2497

Email: dparr@pittmeadows.ca

Public Comment Record
Rogers Proposed Wireless Communications Installation
W4462 – Golden Ears Way & Lougheed

Name: _____

Address: _____

Telephone: _____

E-mail: _____

Comments

To be considered part of this consultation, comments must be received by close of business day on July 17, 2019. Please forward your comments to:

Rogers Communications Inc.
c/o Cypress Land Services
Suite 1051 - 409 Granville Street
Vancouver, BC V6C 1T2
Email: publicconsultation@cypresslandservices.com
Fax: 604-620-0876

** Comments received shall form part of ISED's Public Consultation Process under the Spectrum Management and Telecommunications Client Procedures Circular CPC-2-0-03, Issue 5, and will be made public as part of a report issued to the City of Pitt Meadows and ISED.*



Cypress Land Services Inc.
Suite 1051 – 409 Granville Street
Vancouver, BC V6C 1T2

Telephone: 604.620.0877
Facsimile: 604.620.0876
Website : www.cypresslandservices.com

June 3, 2019

Stefanie Ekeli
Development Services Technician
City of Pitt Meadows
12007 Harris Road
Pitt Meadows, BC V3Y 2B5

Subject: ROGERS Telecommunications Facility Proposal
Rationale Letter
PID: 002-998-581
Address : 19675 Meadow Gardens Way, Pitt Meadows, BC
Coordinates: N 49.225480°, W 122.667516°
ROGERS Site: W4462

Overview

Cypress Land Services Inc., in our capacity as agents to ROGERS, is submitting this rational letter to accompany the Development Permit and to formalize the consultation process related to the installation and operation of a telecommunications facility. We have been in preliminary consultation with City of Pitt Meadows and in order to provide improved, dependable wireless services a new facility is required.

Proposed Site

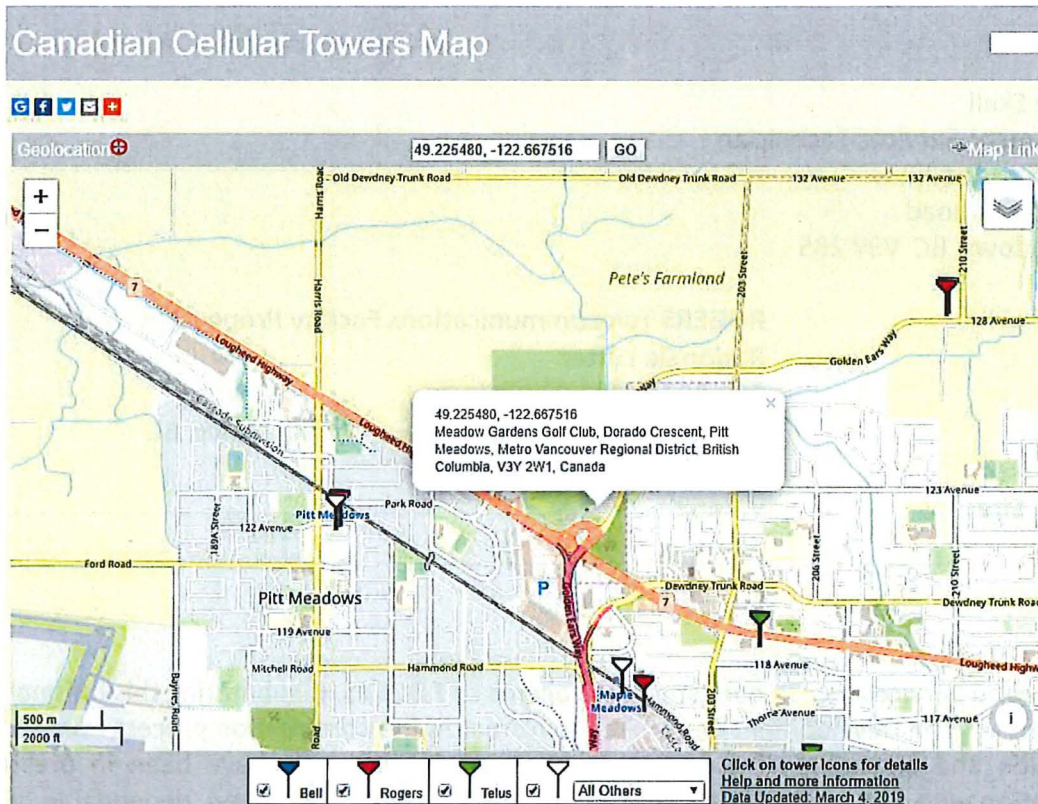
The subject property is the Meadow Gardens Golf Course at 19675 Meadow Gardens Way, Pitt Meadows, BC. Please see **Schedule A: Tower Site Location**.

Rationale for Site Selection

ROGERS seeks to maintain and improve high quality, dependable network services. In order to improve network performance, ROGERS is seeking to add the proposed communications installation to improve service in Pitt Meadow.

The proposed site is a result of many considerations. When a telecommunications carrier is determining a location for new wireless installation it must consider a number of factors to ensure the new installation operates effectively and results in reliable wireless services for the immediate community. Some of the considerations include frequency of operation, local

topography, patterns of wireless users, building heights, road patterns, availability of land and existing structures. ROGERS investigated the area for collocation options on nearby buildings and existing structures. Unfortunately, there are no buildings or existing structures to utilize. The closest tower is over 1km away, which is too far from the area ROGERS needs to service. As such, ROGERS is proposing to build a new free-standing tower.



Proposal Details

The proposed installation consists of a monopole wireless communications facility and fenced equipment area adjacent to the driving range on the Southeast portion of the parcel adjacent to Golden Ears Way. Once completed the antenna system will measure 36.5 metres in height (inclusive of a 1.0 metre lightning rod) and occupy an area of 6.0 by 8.0 metres. The site will be accessed via the existing parking lot. ROGERS has completed preliminary design plans. These preliminary design plans are subject to final engineered design, land survey and approval of Transport Canada. Transport Canada approval may require tower lighting and/or marking; comments are pending.

Consultation Process with the City of Pitt Meadows

The City of Pitt Meadows has adopted Council Policy C036 - Consultation Protocol for the Placement of Radiocommunication and Broadcasting Antenna Systems. The purpose of this Policy is to govern the public consultation process for radiocommunication structures not exempt

from a municipal review and to set a process by which applications for radiocommunication towers and antennas are reviewed in the City.

TELUS is required to provide written notification to adjacent landowners and stakeholders with an opportunity to engage in reasonable, relevant, and timely communication regarding the proposal within 488.0 metres or less from the proposed installation. There will also be a Public Information Meeting (drop in format) that will be held on Wednesday, July 10, 2019 from 5:00pm – 7:00pm at the Meadow Gardens Golf Course located at 19675 Meadow Gardens Way, Pitt Meadows, BC and 2 advertisements placed in the local newspaper.

Health and Safety

Health Canada's Safety Code 6 regulations are applicable to this, and all, telecommunications sites. Safety Code 6 seeks to limit the public's exposure to radiofrequency electromagnetic fields and ensures public safety. Additional information on health and safety may be found on-line at:

Health Canada:

http://www.hc-sc.gc.ca/ewh-semt/pubs/radiation/radio_guide-lignes_direct-eng.php

Concurrence Requirements

In order to complete the consultation process, ROGERS will be requesting concurrence from the City of Pitt Meadows in a form acceptable by ISSED.

Conclusion

Please consider this information package as the official commencement of consultation with the City of Pitt Meadows. ROGERS is committed to working with the City and the community to provide improved wireless services.

We look forward to working together during this process. Please do not hesitate to contact us by phone at 604-620-0877 or by email at tawny@cypresslandservices.com.

Thank you in advance for your assistance and consideration.

Sincerely,

CYPRESS LAND SERVICES

Agents for ROGERS



Tawny Verigin
Manager of Government Affairs

SCHEDULE A TOWER SITE LOCATION



SCHEDULE B
PHOTO-SIMULATION

BEFORE



AFTER



*Photo Simulation is a close representation and is for conceptual purposes only – not to scale.
Proposed design is subject to change based on final engineer plans
The tower will be marked in accordance with Transport Canada Obstruction Marking and NAV
Canada requirements.*



Notice of Proposed Rogers Communications Inc. Telecommunications Facility

Description: As part of the public consultation process required by Innovation, Science and Economic Development Canada (ISED), formerly Industry Canada, Rogers Communications Inc. is inviting the public to comment on a proposed telecommunications facility consisting of 36.5 metre (inclusive of a 1.0 metre lightning rod) monopole tower and ancillary radio equipment in order to provide dependable wireless data and voice communication services to east Pitt Meadows.

Location: Meadow Gardens Golf Course
(beside the driving range)
19675 Meadow Gardens Way,
Pitt Meadows, BC
(PID: 002-998-581)

Coordinates: 49.225480° N 122.667516° W

**You are invited to a Public Information Meeting
(drop in format):**

Date: Wednesday, July 10, 2019

Time: 5:00pm – 7:00pm

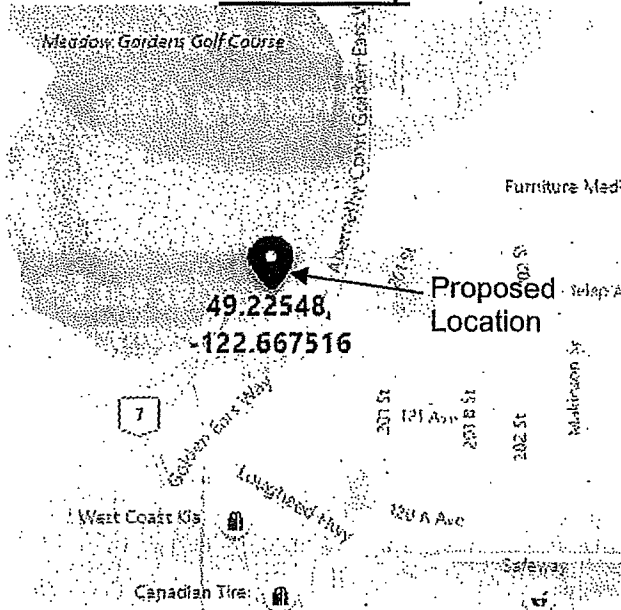
Location: Meadow Gardens Golf Course located at
19675 Meadow Gardens Way, Pitt Meadows, BC

For More Information

Contact Rogers Communications Inc. at:
Tawny Verigin c/o Cypress Land Services
Agents to Rogers Communications Inc.
Suite 1051, 409 Granville Street, Vancouver, BC V6C 1T2
Tel: 1.855.301.1520
Email: publicconsultation@cvpresslandservices.com

The public is welcome to comment on the proposal by the end of the business day on July 17, 2019 respect to this matter.
Rogers File: W4462 – Golden Ears Way & Lougheed

Location Map





Notice of Proposed Rogers Communications Inc. Telecommunications Facility

Description: As part of the public consultation process required by Innovation, Science and Economic Development Canada (ISED), formerly Industry Canada, Rogers Communications Inc. is inviting the public to comment on a proposed telecommunications facility consisting of 36.5 metre (inclusive of a 1.0 metre lightning rod) monopole tower and ancillary radio equipment in order to provide dependable wireless data and voice communication services to east Pitt Meadows.

Location: Meadow Gardens Golf Course
(beside the driving range)
19675 Meadow Gardens Way,
Pitt Meadows, BC
(PID: 002-998-581)

Coordinates: 49.225480°, W 122.667516°

**You are invited to a Public Information Meeting
(drop in format):**

Date: Wednesday, July 10, 2019

Time: 5:00pm – 7:00pm

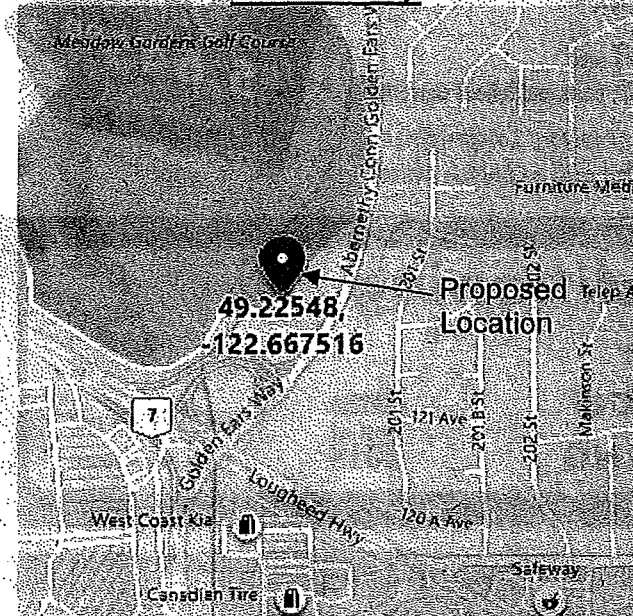
Location: Meadow Gardens Golf Course located at
19675 Meadow Gardens Way, Pitt Meadows, BC

For More Information

Contact Rogers Communications Inc. at:
Tawny Verigin c/o Cypress Land Services
Agents to Rogers Communications Inc.
Suite 1051, 409 Granville Street, Vancouver, BC V6C 1T2
Tel: 1.855.301.1520
Email: publicconsultation@cypresslandservices.com

The public is welcome to comment on the proposal by the end of the business day on July 17, 2019 respect to this matter.
Rogers File: W4462 – Golden Ears Way & Lougheed

Location Map

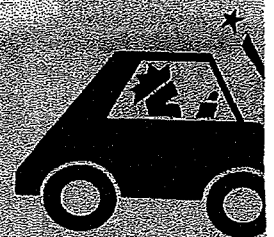


to a low-barrier facility on Burnett St., where residents can use drugs on the premises, as is the case at Royal Crest modular facility. "The purpose of this is to launch what council's envisioned. We're not talking about low-barrier housing here. We're talking about treatment. And we're talking about detox facilities and were talking about transitional housing in an abstinence-based environment," Morden added.

The city has asked Coast Mental Health to ensure that a higher level of abstinence occurs at the Burnett St. facility, which Morden said there will be more of a men-

FINDLAY

ICBC • Pe



Have you been in
Free initial
Friendly, fast



Bart R. Findlay



Ma

ALSO PROVIDE
• FAMILY • WILLS AND E
22311 - 119TH A

Visit our
www.findlaygunnell.ca
Proudly Serving Maple Ridge

Chad Marlatt
Agents for Rogers
Cypress Land Services

Suite 1051, 409 Granville Street, Vancouver, BC V6C 1T2

Office: 604 620 0877

Fax: 604 620 0876

Cell: 604 910 7310

Email: chad@cypresslandservices.com

From: [REDACTED]

Sent: July 16, 2019 4:21 PM

To: Public Consultation <publicconsultation@cypresslandservices.com>; ic.spectrumsurrey-surreyspectre.ic@canada.ca; dparr@pittmeadows.ca; mayorsoffice@pittmeadows.ca

Cc: kbarchard@pittmeadows.bc.ca; clerks@mapleridge.ca; Dan.Ruimy@parl.gc.ca; lisa.beare.MLA@leg.bc.ca

Subject: PETITION TO STOP CELL TOWER:

TO WHOM IT MAY CONCERN:

Rogers Communications Inc.

ISED Lower Mainland District Office:

Taw3ny Verigin Rogers c/o cypress Land Services:

Dana K. Parr City of Pitt Meadows:

Mayor Dingwall and Pitt Meadows Council:

Kate Barchard, Pitt Meadows City:

Mayor and Council Maple Ridge:

Dan Rummy MLA Maple Ridge:

Lisa Beare MLA Pitt Meadows:

Re:

Petitions opposing the proposed installation of a monopole wireless communications facility and fenced equipment area to be located at the Meadow Gardens Gold Course at 19675 Meadow Gardens Way, Pitt Meadows. BC.

Please find attached a copy of the cover letter and 21 pages of petitions opposing the installation of a monopole wireless communication facility and fenced equipment area to be located at the Meadow Gardens Golf Course at 19675 Meadow Gardens Way, Pitt Meadows. BC. (PID 002-998-581). The letter and attached petitions were personally handed to Kate Barchard Executive Assistant to the Mayor and Council of Pitt Meadows this afternoon.

Since the proposed installation is on the border of Pitt Meadows and Maple Ridge we are forwarding a copy of our petitions to the Mayor and Council of Maple Ridge as a courtesy.

Kind Regards,

[REDACTED]

From: [REDACTED]
[REDACTED]
[REDACTED]
[REDACTED]

To: Mayor and Council

City of Maple Ridge

11995 Haney Place

Maple Ridge, BC Canada V2X 6A9

Tel: 604-463-5221 or 604-467-7483 **Email:** mayorandcouncil@mapleridge.ca

To: Mayor and Council

City of Pitt Meadows

12007 Harris Rd

Pitt Meadows, BC

V3Y 2B5

Phone: 604-465-5454 **Email:** council@pittmeadows.ca

To the City of Maple Ridge and the City of Pitt Meadows;

I have sent you this letter through Canada Post so you will have a hard copy in your hands. It was difficult for me to write but is so extremely important that I persisted. I don't have the health to write to you every month or every week. I hope you will read this letter of my concerns and heed the information I relay. I'm also sending you this letter through email, to make it easier for you to view my references.

I have many concerns with 5G wireless that is proposed to be coming here to Maple Ridge and Pitt Meadows. I have lived in Pitt Meadows and Maple Ridge for most of my life. My family lives in both cities.

My grown children are each very involved in the technology, as programmers, gamers, software developers, internet users and more. We all agree that we need fibre optic using cable from the source all the way to our homes and businesses. Wired is the only safe way, which is important for every living thing. It is also the only secure way which is important for our nation and for our personal security. Wireless infrastructure is known to be insecure.

Our family has had all the wireless electronic toys as they became available. I found we had to change, because we weren't getting any sleep. For myself, five days in a row, with no sleep. When this happened for the third time I realized something had to change. I certainly didn't want this for my family. We were getting sicker and sicker. I dragged myself around and everything hurt; foggy brain, tremendous fatigue and intestinal problems. We used to have cordless phones in the house, WiFi throughout, Bluetooth, cordless speakers, cordless earphones, cordless mice, cordless keyboards, and our cell phones. We used the phones as alarm clocks and charged them close to us at night.

We didn't want to go back to the dark ages. We still want the things most people want. We've since tried to find safer ways to use them when we must. When at home I use a safe, secure, wired phone. No more cordless phones. Even my lap-top computer is wired. No more WiFi.

Everything we wanted to do we found we could do much more safely wired. Wired Internet is safe. Copper wire is safe. Fibre optic using cable is very fast and IS SAFE. Fibre optic using cable is also secure, where wireless is NOT SAFE or secure.

For many years Telus has been telling us Fibre Optics is coming. From the very beginning when Telus started mentioning the words "Fibre Optics" in their advertisements, I asked Telus:

"Is this going to be fibre optic using cable all the way from the source to the home?." They admitted, "No." This is the important question to ask the provider, because all the way is the only true, only safe, only secure fibre optic cable.

Any separation by copper wire would mean a slower speed and therefore not true fibre optic, and any separation with a Mini Cell, a Cell Tower, and or WiFi for any length of the way, especially to the home (the last mile) is not as fast, not secure, and is NOT SAFE. We are then back to the dangers of Radio Frequency Radiation and Microwave Radiation.

Canada's "Safety Code 6," which is supposed to be protecting us from harm is an antiquated "guideline," has not kept up to the changes in technology over the decades. Nor does it test the devices the way we use them. It was put together by early promoters. No Biologists or Chemists were involved in the testing. Originally created in the 1970's for the protection of federal employees and visitors to federal buildings, they were only testing for heating. They didn't consider the other effects.

They made a jelly mould of an adult person, head and torso, modeled from a male soldier, to represent the human test subject, they stuck a thermometer in it's head, exposed it to Radiofrequency (RF) electromagnetic energy in the frequency range from 3kHz to 300 GHz.. If it didn't raise in temperature by one degree in 6 minutes, it passed. This is what's supposed to be keeping us safe? Any level headed thinking person can tell this is not measuring the changes to our cells, or to our DNA, or to our fertility. It's not taking into consideration the effects on children who have softer bones including the skull, with more moisture content in the brain allowing deeper penetration by Radio Frequency Radiation.

What is the City's position on this?

There are certainly a lot of independent Doctors, Biologists and Chemists doing and submitting studies and papers now. Apparently the promoters of 5G consider the outcomes of the proliferation of studies a balancing act. There is so much money riding on it that the promoters don't want anything to stop the money train. So whenever another study comes out that warns of danger to humans, animals and plant life from Radio Frequency Radiation and Microwave Radiation, they promote yet another study paid for by them, that shows that the danger is inconclusive. Much the same tactic as was used by the tobacco industry.

Longtime World Health Organization advisor and Cancer Expert Dr. Anthony B. Miller updates his opinion linking wireless exposures to Cancer based on new scientific evidence and has declared it a Group 1 Carcinogen in humans. Other experts agree.

<https://www.emfacts.com/2017/08/cancer-expert-declares-cell-phone-and-wireless-radiation-as-carcinogenic-to-humans/>

Shared documents of Dr. Anthony B Miller

<https://phpa.health.maryland.gov/OEHFP/EH/Shared%20Documents/CEHPAC/CEHPAC%20Dec%202013%20Comments%20Part%204.pdf>

Two Words come up again and again, they are, “Precautionary Principle.” Why are we not using this fundamental truth to protect the people of Maple Ridge and Pitt Meadows? *The principle implies that there is a social responsibility to protect the public from exposure to harm, when scientific investigation has found a plausible risk. These protections can be relaxed only if further scientific findings emerge that provide sound evidence that no harm will result.* Sound evidence means the further scientific investigation can not be paid for by the promoters of the technology.

Cell Phone and Wireless Radiation was declared a “Group 1 carcinogen to humans” July 31, 2017 by long time advisor to the World Health Organization (WHO) Dr. Anthony B. Miller, who along with a long list of qualifications specializes in cancer etiology, prevention, and screening, He was also senior Epidemiologist for the International Agency for Research on Cancer (IARC) He served as Director of the Epidemiology Unit of the National Cancer Institute of Canada, Chair of the Department of Preventive Medicine and Biostatistics at the University of Toronto, Head of the Division of Cancer Epidemiology at the German Cancer Research Centre, and Consultant to the Division of Cancer Prevention of the U.S. National Cancer Institute. He has performed research about electromagnetic fields and cancer and has served on many committees assessing carcinogenicity of various exposures. Miller was visiting Senior Scientist in the IARC Monographs programme as a reviewer to the scientific literature supporting designation of Radiofrequency Electromagnetic Fields (RF-EMF) as a Group 2B possible carcinogen in 2011.

Other experts agree that the increased evidence now establishes RF radiation as a human carcinogen. For example, researchers Dr. Lennart Hardell and Michael Carlberg have published several epidemiological studies that found increased brain cancer associated with long-term cell phone use and conclude that “RF radiation should be regarded as a human carcinogen causing glioma.” In addition, published epidemiological research has also found persons diagnosed with brain cancer had decreased survival rates associated with higher wireless phone use.

World Health Organization Scientist "Cell Phone/Wi-Fi Radiation is A Carcinogen" 2017

<https://www.youtube.com/watch?v=bgGJeOVEDQs>

References on Cell Phone Radio Frequency Radiation and Cancer - He says if we use the Precautionary Principle, we can probably avoid a public health emergency.

<https://ehtrust.org/references-cell-phone-radio-frequency-radiation-cancer/>

Dialogue with the Doctors - Cell Phones, Wireless and Your Health: A Scientific Update with Practical Recommendations - Anthony Miller MD, FRCP July 31, 2017

<https://ehtrust.org/wp-content/uploads/Dr.-Anthony-Miller-Presentation-July-31-2017.pdf>

Put this with another 600 scientific papers by countless Biologists, Chemists, Doctors, and EMF Scientists who all say that Radio Frequency Radiation and Microwave Radiation is a danger to Humans effecting us at the cellular level, Changing our DNA, making us sick in all the ways myself and my family have already experienced and much much worse.

<https://www.saferemr.com/2018/04/recent-research.html>

Wireless Radiation and EMF Studies Published since August, 2016. Joel M. Moskowitz, Ph.D. School of Public Health University of California, Berkeley Electromagnetic Radiation Safety May 23, 2019

<https://drive.google.com/file/d/1pRgaUgp213IbJ5e972pSOkGkcz2r7V7t/view>

July 2, 2019 - Court Upholds Landmark Berkeley Cell Phone Radiation Right to Know Ordinance and Rejects Industries Appeal: <https://ehtrust.org/court-upholds-landmark-berkeley-cell-phone-radiation-right-to-know-ordinance-and-rejects-industries-appeal/>

Arguing away caution should not be happening at this point. It's come to where we are exposed to wireless everywhere we go. Where can we go to be away from it so we can be safe? We can't even be safe in our own homes. And now they tell us 5G wireless is coming with a hundred times the Radio Frequency Radiation and Microwave Radiation.

Once changed at the cellular level, changed in our DNA, there is no coming back from that. This forever changes us. It effects our fertility, causes cancer, causes cardiac effects, neurodegenerative diseases, digital dementia, early onset Alzheimer's and can make our lives miserable with chronic illness. These frequencies effect every living thing.

**I need to ask: why do we need it? Which frequencies are proposed for our city?
I've heard our City owns Cel Towers - is this true?**

Liability will come with owning and selling an un-insurable, untested and injurious product. This will be a terrible conflict for our city. The dangers are very real and they will come home to roost. When the general public are finally allowed to know the real dangers of this thing they have become so attached to, they will not be so forgiving.

It's all too technical for most of the population; however, the people do expect and rely on our governments to protect us from the dangers that they themselves do not understand.

Radio Frequencies and Microwave Radiation are very real, even though most people don't see or feel them directly without technological assistance. We receive phone calls through concrete buildings, so the idea that the same radio waves don't pass through us is just silly.

Most of the 5G and other wireless studies that have been presented to us by those promoting it are misleading. In these studies they do not pulse the waves, and it is the pulsing waves that

cause so many irreversible health issues. This is important because research on microwaves already tells us how pulsed waves have more profound biological effects on our body compared to non-pulsed waves. For instance, previous studies show how pulse rates of the frequency led to gene toxicity and DNA strand breaks. All wireless communication devices communicate via pulsations.

Smart meters are another unavoidable exposure we have to pulsed waves, each meter emitting from 10,000 - 190,000 short millisecond bursts throughout each day, of which 90% of the emissions are not even user data but mesh network "chatter." Take note of "chatter," it goes on continually between wireless devices. Constantly exposing us.

We can immediately feel Radio Frequency and Microwave Radiation when the Military uses it on humans. The military have been using it to disperse crowds for many decades using what they now call the Active Denial System. Like Tazers, they say it's a non-lethal, directed-energy weapon. It was developed by the U.S. military, designed for area denial, perimeter security and crowd control. Until 5G, crowds of people knew when they would be targeted by this, because they could usually see the huge device on a truck in their vicinity.

With the 5G Network, the truck will no longer be required as the 5G Network uses nearly the same Frequency as the Weaponized Crowd Control Systems. These are the new spectrum bands, the higher frequency millimeter waves they speak of that are part of the completely new system they call 5G. If you want more information on this subject simply google it, there is a lot of information on the subject, Youtube videos will show you how it works. There are even some promotional videos there presented by the U.S. military.

My cell phone is 3G (third generation technology), Aware of the dangers, I use it as safely as possible. Most Smart phones are in the 3G or 4G (fourth generation technology).

5G (fifth generation technology) is a whole new system. This is why the provider says they need all the Cell Towers and the Small Cells. 5G wireless millimeter waves don't travel far, so they will need to install many Small Cells. On telephone poles every third house or so. Because the mm waves will need to overlap for full coverage. We will be bombarded with pulsed millimeter waves non-stop, 24 hours a day, 7 days a week. There will be no way to get away from it. This new technology is being "Live Tested."

Cell towers are going up without people's knowledge or consent. The one near my home, near Yennadon school just went up. I didn't know it was coming. All of a sudden it was just there. Children are even more sensitive than adults to the dangers of radio frequency radiation and microwave radiation. Cell towers should never be placed near schools, hospitals, homes, farms or near any living thing.

Cell towers in this area appear to be routinely put on buildings where people live, on farms, and on cow pastures. The effects of EMFs on cows situated around power lines shows us their calves have a high incidence of being born with cataracts. Another problem is the cows may not go into estrous, no estrous means no calves and no calves mean no milk or meat. Plainly it interferes

with birds, bees, babies and plant life. Electromagnetic fields, radio frequency radiation and microwave radiation can so disorient bees that they cannot find their way back to their hive.

What will we do without pollinators? Much of our food that we grow must be pollinated. I recently saw a science article where it explains how the radio frequencies interfere with insect antenna. As sensory organs, what antenna do for each group of insect varies, sensing touch, air motion, heat, sound vibration, smell, taste and other purposes.

Apparently human sweat glands act like little antennas and are strong absorbers of 5G radiation, yet the standards being followed do not consider the skin rad effect when assessing possible health risks.

(RFR) Radio Frequency Radiation effects us at the cellular level, once we are changed it's not like we can just rest for a while and get ourselves back to normal. We can't get back to the way we were, once the cells are changed they are changed forever. When there is no where without wireless, where do we go to rest to get away from the cause of our illness?

There is a huge concern that Radio Frequency Radiation will effect our reproductive organs reducing our fertility. The science is showing us now that if we stay on this track of wireless technology, we have possibly three to five generations left. One scientist says we possibly have 150 years, another doctor says 5 years before we loose fertility and have serious problems. This would essentially be the end of humanity.

We won't know right away. That's how insidious the effects will display themselves. That little girl fetus when we still don't know we are pregnant is growing inside us while we use a laptop with WiFi. The radio Frequencies are coming directly where the baby fetus is forming. Every egg that baby girl will have for her entire lifetime is forming in utero before we even know she's there. The baby girl may be born, looks like all is fine except 25 years later when it comes to the time when she wants to have children of her own. Will her eggs be viable? They were formed under intense Radio Frequency Radiation.

And our men who carry their phones in their pants pocket near the family jewels. What's happening there? I still haven't figured out how to use the device without touching it.

The small print warning inside your phone states you are not supposed to hold it closer to your body than 1.5 centimeters (5/8 inch), and no closer than 15.3 centimeters (6 inches) between the wireless device and an implanted medical device with warnings to shut it off if in doubt or if interference is taking place. Other concerns include amalgam, also known as "silver fillings" in the mouth, dental crowns, and implants. **US National Library of Medicine and the National Institutes of Health:** <https://www.ncbi.nlm.nih.gov/pmc/articles/PMC4795328/>

5G wireless will expose us to a hundred times the radiation that we are exposed to now. The lower levels are already giving us problems. They'll be using the whole new system of 5G wireless in addition to what we already have. Where will the people with medical implants go then? There are many scientists, biologists, chemists and physicians saying it may be too late, we've already done it to ourselves.

Stefanie Ekeli

From: Chad Marlatt <chad@cypresslandservices.com>
Sent: July-17-19 12:04 PM
To: [REDACTED] Public Consultation; ic.spectrumssurrey-surreyspectre.ic@canada.ca; Dana Parr; mayorsoffice
Cc: Kate Barchard; clerks@mapleridge.ca; Dan.Ruimy@parl.gc.ca; lisa.beare.MLA@leg.bc.ca; Stefanie Ekeli
Subject: RE: PETITION TO STOP CELL TOWER:

[REDACTED] – thanks for taking the time to comment on the proposed Rogers wireless installation next to the Meadow Gardens driving range.

You expressed concern regarding the public consultation process. Please note that Rogers is following the City of Pitt Meadows consultation process for wireless antenna installations. This process is far more rigorous than typical public consultations for wireless antenna installations. Most public consultation processes across Canada would not require notification to households in the area as the proposed antenna installation is setback a large distance from surrounding homes/properties. That said, everyone within 488m of the golf course property boundary were notified through a direct mail out letter, notices were placed in the local newspaper and a public open house was held. In this instance, over 1700 direct mail notices were sent. The closest home is approximately 150 m away with the vast majority of homes being over half a kilometer away.

You expressed concern regarding the accuracy of the photo-rendering next to the driving range. This rendering is very accurate. The photo rendering is taken from the closest location the tower could be viewed by the public (from Golden Ears Way approx. 130 away). The pole is proposed to be five (5) metres higher than the existing driving range poles, painted dark grey to match the existing poles with the antennas mounted directly to the pole. The pole will be slightly wider in diameter than the existing driving range poles as depicted in the photo-rendering. The photo you supplied is a larger, galvanized pole with the antennas mounted off the tower at the top with a large “pinwheel” structure. The photo-rendering we completed displays the proposed pole within the context of the driving range. It should be noted that the design of the installation and location next to the driving range was carefully designed and located to limit the visibility of the pole. As you are likely aware, there are thirty (30) existing driving range poles that hold up the netting. The addition of one more pole has a very minimal impact to the driving range when viewed from surrounding roads and properties. Further to this, the installation is proposed on a large property adjacent at a major highway intersection (Lougheed and Golden Ears Way) – a location typical of commercial activities including wireless antenna installations.

You have also expressed concerns related to health and safety (as did a number of folks attending that attended the public open house). Please note health and safety is regulated by Innovation Science and Economic Development (ISED) through standards set by Health Canada. Local municipalities and health authorities do not regulate the safety of wireless antenna installations. Health Canada has established Safety Code 6 (SC6) to ensure public safety and regularly reviews current research. Most installation across Canada are located in close proximity to where people work and live – as this is where the public use their mobile devices. Antenna installations are typically located on the rooftops of apartment buildings, condos, universities, hospitals, seniors homes and are operated to ensure public safety. There are several installations in Pitt Meadows and Maple Ridge currently servicing residents. Most of these installations are far closer to homes than the proposed including installations at the Pitt Meadows Firehall which is in close proximity to hundreds of households. That said, all of these installation are safe and in compliance with SC6 (at all times). The level of RF output of these antenna installation is typical less than that of a wireless internet router found in most homes and school. The proposed installation will be in full compliance with Health Canada’s Safety Code 6 requirements. In fact, it will be thousands of times below the allowable limits permitted by SC6.

Regards,

Martin Pall, PhD, Professor Emeritus in Biochemistry and Basic Medical Science from Washington State University, a leading expert on the biological effects of radiation from cell phones, WiFi and 5G Wireless.

[PROF MARTIN PALL – CELLULAR EFFECTS OF WI-FI, EMFS AND 5G VIA VOLTAGE-GATED CALCIUM CHANNEL \(VGCC\) ACTIVATION](#)

<https://einarflydal.files.wordpress.com/2018/04/pall-to-eu-on-5g-harm-march-2018.pdf>

According to Dr. Martin Pall we could be heading to a crash in our collective brain function. Concerned we will no longer have the human intelligence to think our way out of this crisis.

Greed seems to be the biggest motivator for this industry. There are more Billionaires than ever before. The advertisements say, “invest in 5G, you could be the first ever individual Trillionaire!”

In the book ‘Team Human’ by Douglas Rushkoff, he talks about Billionaires who once they’ve made their money have come to him for advice, peppered him with questions about where to put their bunkers and how to maintain control of their security force after the apocalypse. They are looking for a safe place to live, away from WiFi, Radio Frequency Radiation and Microwave Radiation. Worried about if they have enough money to keep themselves safe and secure, they are trying to insulate themselves from the reality they’ve created by earning their money in this way. This should really make us pause.

Listen to the conversation with Douglas Rushkoff writer of ‘Team Human’ on cbc radio at:
<https://www.cbc.ca/radio/thecurrent/turn-away-from-social-media-and-join-team-human-urges-author-1.5176249>

We know that eventually we will need to go to fibre optic using cable from the source all the way to the home or business anyway (fibre to the home also known as FTTH). WiFi will only take us so far and no further. Fibre optic using cable will support us through many decades of progress so why are we messing around with something we know can hurt us when we can bypass WiFi Small Cells and the like, and go directly to fibre optic using cable where we will need to go eventually any way?

May 30, 2019 we had a community information session & discussion at the Maple Ridge City Hall. We talked about how some communities in BC and across Canada have Community Owned Broadband, wired fibre optic cable for sustainable last-mile solutions. We discussed how we want that for us in Maple Ridge and Pitt Meadows. If you missed the meeting you can watch it on Youtube at:

Fibre Optics VS Small Cells

Is 5G safe? Canadians at Maple Ridge City Hall.

<https://www.youtube.com/watch?v=2YdZd3ZINkQ>

At the City Hall meeting we also watched the **Youtube Video from former head of Microsoft Canada, Frank Clegg:** **<https://www.youtube.com/watch?v=yuF-WtPKEq0&feature=youtu.be>**

URGENT WARNING ~ Media Release: Ontario Doctors Warn of Rising Health Care Costs after 5G Roll Out. <https://www.youtube.com/watch?v=pxXgGauTdy0>

More information at C4ST (Canadians For Safe Technology) <http://c4st.org/>

Are we supposed to accept being exposed to many times what any person with common sense already knows is dangerous even at the lower levels?

If you don't make a better choice for us, it looks like we won't have one. Where can we go to be free of 5G wireless and WiFi? The way it's planned out, it looks like there won't be anywhere we can go. We may or may not be able to safely shield ourselves in our own homes and will need to spend many thousands of dollars to do so. But then we won't be able to go outside. This is insanity.

I honestly don't know what I will do. I am already disabled and unemployable with a central nervous system processing disorder. I have sleep disturbances, heart palpitations, mysterious aches and pains all over, extreme fatigue, intestinal problems and other health concerns. Burning, numbness, tingling, ringing in the ears, all of it is aggravated by Radio Frequency Radiation and Microwave Radiation.

What do I do when 5G is added? A whole new system of RFR and MR added to the system we already have. A 100 times the Radio Frequency Radiation and Microwave Radiation with much higher millimeter pulsed frequencies.

What will we do? Where will the sensitive go? Lets be clear. There is a cumulative effect, so we know that eventually everyone will be sensitive. This will effect every living thing.

Sincerely,



Email, Letter, Comment Sheet or Voice Message	Comment or Question	Support / non-support / neutral	Response to Comment or Question	Date Response Sent
Email	<p>Thank you for your letter outlining the project to install a wireless tower at Meadow Gardens, Pitt Meadows.</p> <p>I support this project</p>	Support	<p>Hi [REDACTED],</p> <p>Thanks for your support for the project!</p> <p>Regards, Tawny Verigin Cypress Land Services Inc. Agents for Rogers Communications Inc.</p>	25-Jun
Email	<p>Attention Tawny Verigin: Re: Proposed Wireless Communication site at Meadow Gardens Golf Course: Dear Tawny and Rogers Communications, I received your communication regarding your intention to install a monopole wireless communications facility at the Meadow Gardens Golf Course in Pitt Meadows, my neighbourhood. I am totally against this installation. I also note that you have deliberately used very dark sky photos in the rendition of how the pole will appear when installed. I am upset that you have to stoop to such dirty tactics to get your information across to the public. You should have used a normal blue sky to show the pole but anyone with a brain in their head can see you have deliberately chosen a very dark sky (obviously Photoshopped) to try and hide the dark pole so that it fades into the background. Also I have noted that your simulated renditions of the tower are “not to scale”. Really!!!! Again please give the public at least the courtesy of having some common sense to realize this is a very clever cover up of what should be an accurate rendition of the information. I strongly object to this installation so close to residential neighborhoods where our most vulnerable citizens, namely children live. Many studies have been shown that living close to such installations indeed have many health risks. In one study, doctors examined close to 1000 patients to see if living close to a cell tower for 10 years affected cancer risk. The social and age differences within the study group were small, with no ethnic diversity. They discovered that the proportion of newly developed cancer cases was three times higher for those living within 1300 feet (a quarter of a mile) of a cellular transmitter compared to those living further away. In addition, they found that the patients became ill with cancer on average 8 years earlier. Another important observation from the research is that for the first 5 years of living near a cell phone tower, the risks were no different than someone living far away from one. However, in years 6-10, the cancer risks jumped more than threefold for those living a quarter of a mile or</p>	non-support	<p>Hi [REDACTED],</p> <p>Thank you for providing your comments regarding the proposed monopole wireless communications facility at the Meadow Gardens Golf Course in Pitt Meadows.</p> <p>In your email you commented on the photo-simulation. The installation is proposed to be located next to 20 other driving range poles. We are proposing to paint it green and feel this is a close representation of what the facility will look like if it is built. Please note, the photo-simulation is for conceptual purposes.</p> <p>In your email you expressed concerns health and safety of the tower. Please know Rogers relies on government experts to set standards for safety. In Canada, Health Canada has established Safety Code 6 to ensure public safety. The limits specified in Health Canada’s SC6 exposure guidelines are based upon review of thousands of peer-reviewed scientific studies of the health impacts of RF energy. SC6 take into consideration the existing EMF energy and the calculations are cumulative to include all surrounding local sites. Should you have further questions regarding the research behind Safety Code 6 regulation or the regulation itself, we encourage those in the community to contact Heath Canada at: ccrpb-pcrpcc@hc-sc.gc.ca.</p> <p>In your email you also expressed concerns of location. When a telecommunications carrier determining a location for new wireless installation it must consider a number of factors to ensure the new installation operates effectively and results in improved wireless services for the immediate community. Some of the considerations include frequency of operation, local topography, patterns of wireless users, building heights, road patterns, availability of land and existing structures. Many households rely on wireless service as their only means of communication to meet their personal, business and emergency needs. Rogers has selected a location for the monopole structure in the vicinity of 20 other driving range poles in an attempt to mimic what is already existing in this area, and set back from the road behind the poles and netting. We appreciate your suggestion for a site down by the Pitt River Bridge and Harris Road on the North Side, however, these areas are 2-4 kilometers from the area Rogers is trying to service, so unfortunately the locations do not meet the network improvement requirements.</p>	25-Jun

	<p>less from a mobile tower. Even more concerning, the average age of diagnosis was much younger. Risk for breast cancer, prostate, pancreas, bowel, melanoma, lung, and blood cancer all increased substantially. The risks for breast cancer were most significant for those living in the inner area, with an average age of 50.8 year for a cancer diagnosis compared with nearly two decades.</p> <p>When you have so many other locations of vacant land between the Pitt River Bridge and Harris Road on the North Side to choose from it is highly concerning to me that you deliberately choose to locate this installation so close to residential homes that are already struggling with high traffic volume and pollution. Young children are especially at risk and it is our duty to think about the younger generation and the consequences of our actions relating to them.</p> <p>Also, there are quite a few choices of land away from residential homes on the Northside of Pitt Meadows down towards the dyke. There are many other responsible choices you could make if you choose to do so. We are bombarded with wireless technology day and night. At least in our own homes we have the ability to turn off cell phones and wireless routers. However forcing people to live close to Monopole wireless communication poles is very unfair and damaging to peoples health as they are never switched off exposing residents to a constant barrage of wireless 24hrs.whether they like it or not. Also whether they have health issues or not and whether they are sensitive to wireless or not. In fact some schools have had to turn off wireless communications because it was found to be affecting children adversely.</p> <p>The location of this monopole wireless communication facility at this particular site so close to houses and children is not acceptable under any circumstances. Think again Rogers, our health is more important.</p> <p>Thank you</p>		<p>Should you have additional comments/concerns please respond within the next 21 days.</p> <p>Regards,</p> <p>Tawny Verigin Cypress Land Services Inc. Agents for Rogers Communications Inc.</p>	
Email	Hi Tawny,		Hi [REDACTED],	
	<p>Thank you for your email. Actually your rendition is nothing like what the cell tower will look like. It would have been more accurate to give people a real indication of what these monopole cell tower structures look like. I am attaching one of these facilities and think the one you are proposing to install would be more like this one. I think it is quite disgusting that you can't be more up front and honest about what you are proposing to do.</p> <p>We have done quite a bit of research about the harmful effects that these installations cause. After 5 years cancer of all types. I have a friend out in Mission who lives very close to one of these facilities and it really affects their dog. It will only sleep in one closet because it bothers him. Also they have friends that come to visit and have to leave as every time they are in their home and the garden they get horrible migraine headaches.</p> <p>I also heard yesterday from a 'golfer' who said you were paying the golf course enough money for this installation that they would be able to pay</p>		<p>The proposed design is a solid monopole structure, painted green with flush mounted antennas. The image you have provided is a completely different design of a galvanized steel lattice self-support structure with a pinwheel antenna array mounted at the top. The photo-simulation is an accurate rendition of the proposed design.</p> <p>Thanks Tawny</p>	08-Jul

	<p>for the new car park they were planning to do. My gosh what a terrible thing to hear. I guess we can all sit in the cancer ward getting our chemotherapy treatments and admire a photo of the new car park while we watch our hair fall out!</p> <p>On a side note. I have the ability to turn off my cell phone. I have the ability and do choose to turn off my wireless router and not own or use a microwave. However with this type of cell tower near my home, I do not have that ability. It is a bombardment of electromagnetic waves 24 hours a day. I would never have moved into this neighbourhood if I knew it was anywhere near such a tower.</p> <p>Also, I don't believe any studies have been done on the accumulation of multiple cell towers and networks all together. Health Canada tests perhaps one such installation but not many of them together which amplify the harmful effects on people, insects and birds.</p> <p>New studies are coming out showing health risks associated with such cell towers. I have a Rogers cell phone and I don't have a problem with reception, dropped calls or issues such as that. I also turn it off when I don't need to use it. We really don't need another cell tower in this immediate area. I urge you to do the installation further from residential homes. We must consider the children and their sensitivity to these installations. Many schools have had to turn off the wireless because it has been shown to affect young kids.</p> <p>The argument about people needing cell phones for emergencies is ridiculous. TELUS offer land line phones at less than \$20 a month. Cell phones are becoming a younger generation "cult" and many of them are too young to understand the health risks. You have the ability to site such installations away from residential neighborhoods, in commercial areas and on land away from homes. I urge you to look hard at the health effects of such a tower in this immediate neighbourhood and do the right thing and put it somewhere else. I value my health - I don't want to take a 1% risk of getting cancer/brain cancer just because the Golf course want to pay for a new car park. Really ?</p> <p>Your rendition is less than honest.</p> <p>Regards,</p> <p>[REDACTED]</p>			
Email	Hi Tawny,I would appreciate a proper photograph of the proposed tower and confirmation that it is a 5G network. The letter does not give proper details.Thank you,[REDACTED]		Hi [REDACTED],Please find the photo simulation attached and a copy of the plans showing the tower design. We feel this is accurate. 5G has not been deployed in Canada. The current design of the tower does not include 5G.ThanksTawny	
Public Meeting Comment	I do not want this cell tower in my neighbourhood. I object to the installation of a cell tower- it is harmful to children, adults, bees and birds. No - Not here		N/A	N/A

sheet					
Email	<p>Hi Tawny,</p> <p>I asked for a proper photograph of a close up of the actual top of the tower. The simulation (Photoshopped) is too far away to see what the top will look like.</p> <p>Regardless, a large number of residents I have spoken to tell me that they have not received a copy of the letter you sent out and were completely unaware of your proposed installation. We understand that when approved 5 G can be added to this monopole whenever you choose.</p> <p>As we have a large amount of seniors in our subdivision I think it is really upsetting to be given a black sky with a simulation of a black pole at great distance. In my opinion this is not an accurate or fair description or photograph of what you are intending to install. When you deal with Seniors it is your responsibility to be fair and objective with your information. Also, a great many of our residents are away on summer vacations and if the letters had been sent to them in their absence they would not have received them. The time line you have given is much too short.</p> <p>No close up photos were given of the pole.</p> <p>I rest my case.</p> <p>Regards, [REDACTED]</p>		N/A	N/A	
Email	<p>TO WHOM IT MAY CONCERN:</p> <p>Rogers Communications Inc. ISED Lower Mainland District Office: Taw3ny Verigin Rogers c/o cypress Land Services: Dana K. Parr City of Pitt Meadows: Mayor Dingwall and Pitt Meadows Council: Kate Barchard, Pitt Meadows City: Mayor and Council Maple Ridge: Dan Rummy MLA Maple Ridge: Lisa Beare MLA Pitt Meadows:</p> <p>Re: Petitions opposing the proposed installation of a monopole wireless communications facility and fenced equipment area to be located at the Meadow Gardens Golf Course at 19675 Meadow Gardens Way, Pitt Meadows. BC.</p>		<p>[REDACTED], – thanks for taking the time to comment on the proposed Rogers wireless installation next to the Meadow Gardens driving range.</p> <p>You expressed concern regarding the public consultation process. Please note that Rogers is following the City of Pitt Meadows consultation process for wireless antenna installations. This process is far more rigorous than typical public consultations for wireless antenna installations. Most public consultation processes across Canada would not require notification to households in the area as the proposed antenna installation is setback a large distance from surrounding homes/properties. That said, everyone within 488m of the golf course property boundary were notified through a direct mail out letter, notices were placed in the local newspaper and a public open house was held. In this instance, over 1700 direct mail notices were sent. The closest home is approximately 150 m away with the vast majority of homes being over half a kilometer away.</p> <p>You expressed concern regarding the accuracy of the photo-rending next to the driving range. This rendering is very accurate. The photo rendering is taken from the closest location the tower could be viewed by the public (from Golden Ears Way approx. 130 away). The pole is proposed to be five (5) metres higher than the existing driving range poles, painted dark grey to match the existing poles with the antennas mounted directly to the pole. The pole will be slightly wider in diameter than the existing driving range poles as</p>		N/A

	<p>Please find attached a copy of the cover letter and 21 pages of petitions opposing the installation of a monopole wireless communication facility and fenced equipment area to be located at the Meadow Gardens Golf Course at 19675 Meadow Gardens Way, Pitt Meadows. BC. (PID 002-998-581). The letter and attached petitions were personally handed to Kate Barchard Executive Assistant to the Mayor and Council of Pitt Meadows this afternoon.</p> <p>Since the proposed installation is on the border of Pitt Meadows and Maple Ridge we are forwarding a copy of our petitions to the Mayor and Council of Maple Ridge as a courtesy. We are also asking for the time period for public consultation be extended until the end of August as many residents are either away on extended summer vacations and/or have indicated that they did not receive the letter from Rogers and would like to sign the Petition.</p>		<p>depicted in the photo-rending. The photo you supplied is a larger, galvanized pole with the antennas mounted off the tower at the top with a large “pinwheel” structure. The photo-rending we completed displays the proposed pole within the context of the driving range. It should be noted that the design of the installation and location next to the driving range was carefully designed and located to limit the visibility of the pole. As you are likely aware, there are thirty (30) existing driving range poles that hold up the netting. The addition of one more pole has a very minimal impact to the driving range when viewed from surrounding roads and properties. Further to this, the installation is proposed on a large property adjacent at a major highway intersection (Lougheed and Golden Ears Way) – a location typical of commercial activities including wireless antenna installations.</p> <p>You have also expressed concerns related to health and safety (as did a number of folks attending that attended the public open house). Please note health and safety is regulated by Innovation Science and Economic Development (ISED) through standards set by Health Canada. Local municipalities and health authorities do not regulate the safety of wireless antenna installations. Health Canada has established Safety Code 6 (SC6) to ensure public safety and regularly reviews current research. Most installation across Canada are located in close proximity to where people work and live – as this is where the public use their mobile devices. Antenna installations are typically located on the rooftops of apartment buildings, condos, universities, hospitals, seniors homes and are operated to ensure public safety. There are several installations in Pitt Meadows and Maple Ridge currently servicing residents. Most of these installations are far closer to homes than the proposed including installations at the Pitt Meadows Firehall which is in close proximity to hundreds of households. That said, all of these installation are safe and in compliance with SC6 (at all times). The level of RF output of these antenna installation is typical less than that of a wireless internet router found in most homes and school. The proposed installation will be in full compliance with Health Canada’s Safety Code 6 requirements. In fact, it will be thousands of times below the allowable limits permitted by SC6.</p> <p>Regards, Chad Marlatt Agents for Rogers Cypress Land Services</p>	
16-Jul	<p>TO WHOM IT MAY CONCERN</p> <p>Re: The proposed installation of a monopole wireless communications facility and fenced equipment area to be located at the Meadow Gardens Golf Course at 19675 Meadow Gardens Way, Pitt Meadows. BC. (PID 002-998-581).</p> <p>Within the Boundaries of North to 128th Avenue, South to Hammond Road, West to Bonson Road and East to 203rd Street. Including the subdivision at 19639 Meadow Gardens Way, Pitt Meadows and 19673 and 19677 Meadow Gardens Way, Pitt Meadows BC.</p> <p>I would like to voice my personal comments regarding the proposed installation of a monopole wireless communication facility and fenced equipment area as above.</p>			17-Jul

	<p>Unfortunately a large amount of signed petitions on the Noticeboard at the Fairways apartments at 19673 and 19677 Meadow Gardens Way appear to have been deliberately removed and destroyed. We have no way of know who signed them or how to let those residents know that their voices will now not be heard as they have been obliterated. The residents will think their petitions have submitted and they have not. This is a shocking event and an unspeakable act of intentional destruction.</p> <p>1) A large amount of people in the immediate area did not receive the letter that Rogers Communications sent out regarding information about the proposed installation of a Cell tower with details of a 2 hour Public information meeting to be held on July 10th at the Meadow Gardens Golf Course. In fact, when asked the majority of residents did not know anything about the proposed installation and/or deadline of July 17th for comments regarding the above matter. Also, many residents are away on extended summer vacation so would not have seen the letter. Therefore the requirement that Rogers consult with the nearby public and local municipality was not, in my opinion, conducted in a proper and fair manner. The time-line given was much too short. People have indicated that if given more time and they would have known about this they would have signed the petition. Therefore I am asking for the deadline of July 17th to be extended until the end of August to give those people an opportunity to voice their opinions. Although the letter sent to me was dated June 17th last I did not receive it anywhere close to that date.</p> <p>2) The photo simulation contained in the Rogers letter, in my opinion, was not a fair or “close representation” of a ‘before’ and ‘after’ visualization and did not in any way show an accurate rendition of how the proposed monopole would properly appear. (**Attached) In face it was, in my opinion, clearly deliberately taken at a great distance and ‘Photoshopped’ to show a ‘matchstick’ black pole against a black sky in what appears to be an attempt to mislead the residents. I do not believe that this is in any wat showed a proper close-up of how the top of the pole would look or an accurate picture of the intended height of approximately 120 feet and appearance as a whole. I am attaching what I believe is amore accurate photo of a monopole and electrical facility which has not been edited. I took this photo this morning and it was not shown to the petitioners as I still have not been able to obtain this information from Rogers. When you are dealing with seniors I believe that it behoves people and Companies to provide accurate information and in the clearest way possible. Many seniors do not have computers, email addresses or cell phones and it is everyone’s responsibility to explain information properly and give them more time in which to process and digest any information. 3) I attach herewith brief research showing that cancer rates do increase closer to cell towers and that this also includes other health problems including headaches, memory loss, cardiovascular stress, low sperm count, electromagnetic hypersensitivity. Children due to their thin skulls and developing brains are more vulnerable. In fact, the risk of newly developing cancer was three times higher among patients who had lived</p>			
--	---	--	--	--

	<p>during the past ten years within a distance of 400 metres from a cellular transmitter in comparison to those who lived further away. Pollination bees and birds are also affected which is unfortunate since Pitt Meadows has blueberry fields and agriculture that relies on pollinating bees.4) We understand there is no monitoring of cell towers once installed and that other mobile companies can be invited to collocate on the proposed monopole if constructed. We also understand that if 5G is approved that it can also be installed on such poles in the future.5) I respectfully ask Mayor and Council of Pitt Meadows to view the EMBRAC.CA website where more information can be obtained.6) As the boundaries include Maple Ridge residents I am forwarding copies of this letter and attachments to the Mayor and Council of Maple Ridge as a courtesy. Our children’s health and well being must be considered and indeed the health of all Putt Meadows and Maple Ridge residents. Currently we have the ability to turn off cell phones and wireless routers in our own homes so that we are not exposed to overloads of wireless. However, with the installation of Cell towers that choice is being removed and people are now being forced to endure 24 hours of unwanted electromagnetic waves. The wireless technology is new and as such we should proceed with caution wherever possible. Cell towers are popping up in alarming numbers and it is a huge concern that there are now so many of them and all so close together. Fibre optics appear to be a much safer alternative. In this area the residents are already subject to pollution from the close proximity of 6 lanes of Lougheed Highway traffic and oversized hydro poles. To add a Cell tower to that mix cannot be a healthy option.</p>			
Email	<p>Hi Chad,</p> <p>Thank you for your response to my letter.</p> <p>Unfortunately despite repeated requests to Rogers I have still not been given a proper photograph showing exactly what a close up of this proposed “pole”/cell tower will look like. Obviously there is a reason I am not being given this information.</p> <p>Regardless, it is not the appearance of the pole that is concerning residents. As you have noted in your email, a number of people attending your (2 hour) open house expressed concerns related to health and safety. Although profit motivated Telecommunication Companies wish to assure citizens that the clusters of Cell towers they are installing at multiple locations are safe, recent documentation is proving that these cell towers are in fact causing cancer and other related health issues. Recent reports and data appear to be ignored. In fact in a conversation with an ISED representative this morning, he advised me that as they deal with ‘all of Canada’ they are too busy to deal with individual cell towers and any issues. He stated that any paperwork addressed to them is merely read and then filed. Therefore, people reporting symptoms caused from living close to Cell towers are not being monitored. As you have aptly noted in your last paragraph, local municipalities and health authorities do not regulate, or it seems, monitor the safety of the wireless antenna installations once installed and related illness caused thereof. Research may have “originally” centered around one cell tower but I</p>			

<p>seriously doubt any research has been done to include the large amount of multiple towers that are being installed at an alarming rate. I have downloaded a map of the area and the amount of cell towers is frightening. If you have research regarding health effects from multiple cell towers all together that was conducted within the past 2 years please forward it to me as I am not aware of any recent studies. As it stands, people getting headaches, and health issues may not immediately think they are related to cell Towers. It can be years before symptoms either appear or someone realizes that they are being caused from Cell Towers. I am including a link to a cancer cluster in my close neighbourhood - this particular cancer cluster is close to cell towers. LINK: http://emrabc.ca/?page_id=10887 I was advised by a resident that he was so concerned about his health living close to a Cell tower and this particular cancer cluster that he moved from this location. It is very sad that Citizens and residents health is being ignored and takes a back seat while profit motivated Companies press on to force more and more wireless technology on us regardless of whether we want it or not. We are saying vehemently that we do not.</p> <p>If the health effects are not being properly monitored I disagree with your comments that these installations are safe and not causing problems. I have been told that in some instances schools have had to shut down the wireless in the school due to it causing issues with some of the children. We all know that cancer and memory problems such as dementia are increasing, so are cell towers.</p> <p>While I appreciate you may have mailed out 1700 direct mail notices, many of the residents in my subdivision did not receive them. In fact I myself received 2 identical letters. Obviously some of the letters went astray and others likely remain unopened because the people are away on extended summer vacations. My comments stand, I don't believe the black pole against a black sky photoshopped is a fair indication of how the tower will actually look close up. Your photographer could have easy access and walked onto the Golf Course and taken his photos from there but he did not. The photos are at a remarkable distance so it would have been fair to include a close-up shot of how the pole and antenna at the top would look. However you have not.</p> <p>Frankly what has infuriated me was a comment from a Golfer who golfs at Meadow Gardens stating that he was very happy to have the Cell tower as with the money the Golf Club were receiving from Rogers they had enough money to repave their entire car park. The car park has been entirely repaved obviously with the expectation of receiving money for hosting the Cell Tower. My answer to him was somewhat flip but truthful, "When we are all sitting in the cancer clinic getting our chemotherapy treatments we will be able to admire the photos of the beautiful new car park." Flip perhaps but truthful.</p> <p>If residents living within 488 m of the golf course have to be notified then it follows that there is a reason for the mandatory notification process because there are side effects from these Towers. It is a well known fact that property values decrease close to Cell Towers (no-one wants to live</p>			
--	--	--	--

	<p>near a Cell tower). Why not? The reason being is that people don't want to live close to these installations solely because of health concerns. Is Rogers Wireless planning on paying the residents the balance of money that residents will lose between current property values before the Cell tower is installed and "after" installation?</p> <p>Currently I have the choice whether or not to turn off my cell phone. I have the choice to turn off my wireless router. In fact residents have a choice - if they don't want a cell phone they don't have to have one. With the installation of a Cell Tower (whatever its appearance may be) that choice will be taken away from both myself and the residents in the area and we will all be forced to endure RF output regardless 24 hours a day. That is not our choice.</p> <p>I have placed a call to the BC cancer Society to try and find out if the question is being asked of new patients, "do you live close to a Cell tower". Despite multiple calls I have still not been able to get an answer as no-one appears to know. I find this quite disturbing. As I have said in my previous letters, it behooves Telecommunication Companies to listen to residents. If we say, "no" we don't want a Cell tower in our neighbourhood then they have a responsibility to listen and abide by Citizens/Residents wishes. Our health and well being is key to be able to enjoy peaceful quiet enjoyment of our homes uninterrupted by unwanted RF Wireless.</p> <p>We have said "No" so please respect our wishes.</p>			
phone call	[REDACTED] called and spoke to Ivan. Suggests tower should be half the height. Claims technology today will allow for it if you turn up the antenna. He believes it will be twice as high as the existing net poles at 36.5m. He can see the net and poles from his home approx. 450m away and doesn't like the net either. Summary – visual pollution	non-support	Ivan Spoke to [REDACTED], and noted he would record his concerns which will be shared with staff and council once the comment period has closed.	
	<p>81 year old retired – lives approx. 270m from proposed pole.</p> <p>Him and his wife have had cancer and are concerned about health effects due to tower. Has grandchildren and is concerned about their health as well.</p> <p>Wouldn't buy anything close to power lines.</p> <p>Water Pumping station project nearby in the past, vibration from drilling allegedly cause cracks in his sidewalk/driveway</p> <p>Like things the way they are, that's why they moved there and doesn't want to see a big ugly pole.</p> <p>In the end he can live with a pole but main concern is health.</p>	non-support	Ivan Spoke to [REDACTED], and noted he would record his concerns which will be shared with staff and council once the comment period has closed.	20-Jun
comment sheet	I say go ahead and build the tower.	support	N/A	20-Jun
comment sheet	We are Not in agreement to have a monopole wireless communications facility in our community!	non-support	<p>Hi [REDACTED],</p> <p>Thank you for providing your comments regarding the proposed monopole wireless</p>	N/A

			<p>communications facility at the Meadow Gardens Golf Course in Pitt Meadows.</p> <p>On your comment sheet you stated you are not in agreement to have a communications facility in your community. To add context, when a telecommunications carrier determining a location for new wireless installation it must consider a number of factors to ensure the new installation operates effectively and results in improved wireless services for the immediate community. Some of the considerations include frequency of operation, local topography, patterns of wireless users, building heights, road patterns, availability of land and existing structures. Many households rely on wireless service as their only means of communication to meet their personal, business and emergency needs. Rogers has made an attempt to set the structure back from the homes and road on the large golf course property, next to 20 other driving range poles and we are proposing to paint it green to further reduce visibility.</p> <p>Should you have additional comments/concerns please respond within the next 21 days.</p> <p>Sincerely,</p> <p>Tawny Verigin Cypress Land Services Inc. Agents to Rogers Communications Inc.</p>	
comment sheet	<p>1. What affect does this have on FM and AM Radio reception?</p> <p>2. Is there a shadow study?</p> <p>3. Does this affect other cell service providers service?</p> <p>4. Is there plans to have a beacon light on the tower?</p>	neutral	<p>Hi [REDACTED],</p> <p>Thank you for providing your comments regarding the proposed monopole wireless communications facility at the Meadow Gardens Golf Course in Pitt Meadows.</p> <p>Please find responses to your questions below:</p> <p>1. What affect does this have on FM and AM Radio reception? No, Rogers network operates on different frequencies than FM and AM Radio.</p> <p>2. Is there a shadow study? We have not completed a shadow study. Rogers has made an attempt to set the structure back from the homes and road on the large golf course property, and the tower his been designed to mimic the 20 other driving range poles that are next to the tower location.</p> <p>3. Does this affect other cell service providers service? No, Rogers network operates on different frequencies than other service providers.</p> <p>Is there plans to have a beacon light on the tower? No, Transport Canada has confirmed that no lighting or marking is required.</p> <p>Should you have additional comments/concerns please respond within the next 14 days.</p> <p>Sincerely,</p> <p>Tawny Verigin Cypress Land Services Inc. Agents to Rogers Communications Inc.</p>	28-Jun
comment	Studies have shown populations near communication towers are at risk of	non-support	Hi [REDACTED],	15-Jul

sheet	headaches, sleep disturbance, depression, skin rashes, suicide, concentration problems, dizziness, memory changes, cancer, tremors. There are other places for this tower which are not near a housing community. I'm opposed to this being near my home.		<p>Thank you for providing your comments regarding the proposed monopole wireless communications facility at the Meadow Gardens Golf Course in Pitt Meadows.</p> <p>On you comment sheet you expressed concerns of health and safety of the tower. Please know Rogers relies on government experts to set standards for safety. In Canada, Health Canada has established Safety Code 6 to ensure public safety. The limits specified in Health Canada's SC6 exposure guidelines are based upon review of thousands of peer-reviewed scientific studies of the health impacts of RF energy. SC6 take into consideration the existing EMF energy and the calculations are cumulative to include all surrounding local sites. Should you have further questions regarding the research behind Safety Code 6 regulation or the regulation itself, we encourage those in the community to contact Heath Canada at: ccrpb-pcrpcc@hc-sc.gc.ca.</p> <p>Should you have additional comments/concerns please respond within the next 14 days.</p> <p>Regards,</p> <p>Tawny Verigin Cypress Land Services Inc. Agents for Rogers Communications Inc.</p>	
comment sheet	Dear Sirs: We understand that install the upgrade communication network will provide high level of wireless service. But also affect our home value and affect out plant and people's health. So me don't agree to install the tower please and services. Thanks [REDACTED]	non-support	<p>Hi [REDACTED],</p> <p>Thank you for providing your comments regarding the proposed monopole wireless communications facility at the Meadow Gardens Golf Course in Pitt Meadows.</p> <p>On you comment sheet you expressed concerns of health and safety of the tower. Please know Rogers relies on government experts to set standards for safety. In Canada, Health Canada has established Safety Code 6 to ensure public safety. The limits specified in Health Canada's SC6 exposure guidelines are based upon review of thousands of peer-reviewed scientific studies of the health impacts of RF energy. SC6 take into consideration the existing EMF energy and the calculations are cumulative to include all surrounding local sites. Should you have further questions regarding the research behind Safety Code 6 regulation or the regulation itself, we encourage those in the community to contact Heath Canada at: ccrpb-pcrpcc@hc-sc.gc.ca.</p> <p>You also expressed concerns of negative impacts to property values. The majority of these installations are within close proximity to residential areas as the installations are often required to service residential areas. Antenna installations are typically located on commercial properties, on residential apartment buildings, condo buildings, universities, hospitals, etc. Antenna installations are typically located in areas where users live and work to ensure they have wireless service. The installation is proposed to be located next to 20 other driving range poles on a golf course and is over 675 metres from your property, as such, we do not feel this will impact your property value. Furthermore, Industry Canada's Reports on the National Antenna Tower Policy states research does not indicate a correlation between property value and tower location.</p> <p>Should you have additional comments/concerns please respond within the next 14 days.</p>	08-Jul

			<p>Regards,</p> <p>Tawny Verigin Cypress Land Services Inc. Agents for Rogers Communications Inc.</p>	
comment sheet	In regards to myself and my family who has a history of cancer and birth defects, I would like to voice my concern and state that I am against this cell tower being built in such proximity to my home. For the health of my wife and kids, I hope you hear my concern.	non-support	<p>Hi [REDACTED],Thank you for providing your comments regarding the proposed monopole wireless communications facility at the Meadow Gardens Golf Course in Pitt Meadows.On you comment sheet you expressed concerns of health and safety of the tower. Please know Rogers relies on government experts to set standards for safety. In Canada, Health Canada has established Safety Code 6 to ensure public safety. The limits specified in Health Canada's SC6 exposure guidelines are based upon review of thousands of peer-reviewed scientific studies of the health impacts of RF energy. SC6 take into consideration the existing EMF energy and the calculations are cumulative to include all surrounding local sites. Should you have further questions regarding the research behind Safety Code 6 regulation or the regulation itself, we encourage those in the community to contact Heath Canada at: ccrpb-pcrpcc@hc-sc.gc.ca.Should you have additional comments/concerns please respond within the next 14 days.Regards,Tawny VeriginCypress Land Services Inc.Agents for Rogers Communications Inc.</p>	08-Jul
Public Meeting Comment sheet	I disagree about the construction of Tower. The explanation of my decision is the tower is too close to my house and it may affect my health and safety.	non-support	<p>Hi [REDACTED],</p> <p>Thank you for attending the Public Information Meeting on July 10th and providing your comments regarding the proposed monopole wireless communications facility at the Meadow Gardens Golf Course in Pitt Meadows.</p> <p>On your comment sheet you stated you disagree about the construction for the tower as it is too close to your house. When a telecommunications carrier determining a location for new wireless installation it must consider a number of factors to ensure the new installation operates effectively and results in improved wireless services for the immediate community. Some of the considerations include frequency of operation, local topography, patterns of wireless users, building heights, road patterns, availability of land and existing structures. Many households rely on wireless service as their only means of communication to meet their personal, business and emergency needs. Rogers has made an attempt to set the structure back from the homes and road on the large golf course property. The proposed tower has been designed to mimic the 20 other driving range poles that are next to the tower location and we are proposing to paint it green to further reduce visibility.</p> <p>On you comment sheet you expressed concerns of health and safety of the tower. Please know Rogers relies on government experts to set standards for safety. In Canada, Health Canada has established Safety Code 6 to ensure public safety. The limits specified in Health Canada's SC6 exposure guidelines are based upon review of thousands of peer-reviewed scientific studies of the health impacts of RF energy. SC6 take into consideration the existing EMF energy and the calculations are cumulative to include all surrounding local sites. Should you have further questions regarding the research behind Safety Code 6 regulation or the regulation itself, we encourage those in the community to contact Heath Canada at: ccrpb-pcrpcc@hc-sc.gc.ca.</p> <p>Should you have additional comments/concerns please respond within the next 14 days.</p>	08-Jul

			<p>Regards,</p> <p>Tawny Verigin Cypress Land Services Inc. Agents for Rogers Communications Inc.</p>	
Public Meeting Comment sheet	I disagree because the tower is too big and too high which frightened me	non-support	<p>Hi [REDACTED],</p> <p>Thank you for attending the Public Information Meeting on July 10th and providing your comments regarding the proposed monopole wireless communications facility at the Meadow Gardens Golf Course in Pitt Meadows.</p> <p>On your comment sheet you stated you disagree about the construction of the tower because it is too big and too high. Rogers designed the tower to mimic the 20 other driving range poles that are next to the proposed tower location. The existing driving range poles are 30.4 metres, and the proposed monopole is 35.5 metres, which is a difference of only 5.1 metres. We are proposing to paint it green to further reduce visibility.</p> <p>When a telecommunications carrier determining a location for new wireless installation it must consider a number of factors to ensure the new installation operates effectively and results in improved wireless services for the immediate community. Some of the considerations include frequency of operation, local topography, patterns of wireless users, building heights, road patterns, availability of land and existing structures. Many households rely on wireless service as their only means of communication to meet their personal, business and emergency needs.</p> <p>Should you have additional comments/concerns please respond within the next 14 days.</p> <p>Regards,</p> <p>Tawny Verigin Cypress Land Services Inc. Agents for Rogers Communications Inc.</p>	15-Jul
Public Meeting Comment sheet	Petition to stop Rogers! Cell Tower No! No! No!	non-support	<p>Hi [REDACTED],</p> <p>Thank you for attending the Public Information Meeting on July 10th and providing your comments regarding the proposed monopole wireless communications facility at the Meadow Gardens Golf Course in Pitt Meadows.</p> <p>Your comments will be shared with the City of Pitt Meadows for their consideration. Should you have additional comments/concerns please respond within the next 14 days.</p> <p>Regards,</p> <p>Tawny Verigin Cypress Land Services Inc. Agents for Rogers Communications Inc.</p>	15-Jul

Public Meeting Comment sheet	I disagree with that plan. It is too close to my house if not safe to my kids. I don't think I need that tower. No! No!	non-support	<p>Hi [REDACTED],Thank you for attending the Public Information Meeting on July 10th and providing your comments regarding the proposed monopole wireless communications facility at the Meadow Gardens Golf Course in Pitt Meadows.On your comment sheet you stated you disagree about the construction for the tower as it is too close to your house. When a telecommunications carrier determining a location for new wireless installation it must consider a number of factors to ensure the new installation operates effectively and results in improved wireless services for the immediate community. Some of the considerations include frequency of operation, local topography, patterns of wireless users, building heights, road patterns, availability of land and existing structures. Many households rely on wireless service as their only means of communication to meet their personal, business and emergency needs. Rogers has made an attempt to set the structure back from the homes and road on the large golf course property. The proposed tower has been designed to mimic the 20 other driving range poles that are next to the tower location and we are proposing to paint it green to further reduce visibility.On you comment sheet you expressed concerns of health and safety of the tower. Please know Rogers relies on government experts to set standards for safety. In Canada, Health Canada has established Safety Code 6 to ensure public safety. The limits specified in Health Canada's SC6 exposure guidelines are based upon review of thousands of peer-reviewed scientific studies of the health impacts of RF energy. SC6 take into consideration the existing EMF energy and the calculations are cumulative to include all surrounding local sites. Should you have further questions regarding the research behind Safety Code 6 regulation or the regulation itself, we encourage those in the community to contact Heath Canada at: ccrpb-pcrpcc@hc-sc.gc.ca.Should you have additional comments/concerns please respond within the next 14 days.Regards,Tawny VeriginCypress Land Services Inc.Agents for Rogers Communications Inc.</p>	15-Jul
Public Meeting Comment sheet	I am not agree with that because it is too close to my house. If it not safe to my family health we are going to sale my house. The house value will be going down down! No! No!	non-support	<p>Dear [REDACTED],</p> <p>Thank you for attending the Public Information Meeting on July 10th and providing your comments regarding the proposed monopole wireless communications facility at the Meadow Gardens Golf Course in Pitt Meadows.</p> <p>On your comment sheet you stated you disagree about the construction for the tower as it is too close to your house. When a telecommunications carrier determining a location for new wireless installation it must consider a number of factors to ensure the new installation operates effectively and results in improved wireless services for the immediate community. Some of the considerations include frequency of operation, local topography, patterns of wireless users, building heights, road patterns, availability of land and existing structures. Many households rely on wireless service as their only means of communication to meet their personal, business and emergency needs. Rogers has made an attempt to set the structure back from the homes and road on the large golf course property. The proposed tower has been designed to mimic the 20 other driving range poles that are next to the tower location and we are proposing to paint it green to further reduce visibility. Please note, Industry Canada's Reports on the National Antenna Tower Policy states research does not indicate a correlation between property value and tower location.</p> <p>On you comment sheet you expressed concerns of health and safety of the tower. Please know Rogers relies on government experts to set standards for safety. In Canada,</p>	15-Jul

			<p>Health Canada has established Safety Code 6 to ensure public safety. The limits specified in Health Canada's SC6 exposure guidelines are based upon review of thousands of peer-reviewed scientific studies of the health impacts of RF energy. SC6 take into consideration the existing EMF energy and the calculations are cumulative to include all surrounding local sites. Should you have further questions regarding the research behind Safety Code 6 regulation or the regulation itself, we encourage those in the community to contact Health Canada at: ccrpb-pcrpcc@hc-sc.gc.ca.</p> <p>Should you have additional comments/concerns please respond within the next 14 days.</p> <p>Sincerely,</p> <p>Tawny Verigin Cypress Land Services Inc. Agents to Rogers</p>	
Public Meeting Comment sheet	I drive by this location often I do not want more microwave emissions in my daily commute	non-support	<p>Dear [REDACTED],</p> <p>Thank you for attending the Public Information Meeting on July 10th and providing your comments regarding the proposed monopole wireless communications facility at the Meadow Gardens Golf Course in Pitt Meadows.</p> <p>On your comment sheet you expressed concerns of health and safety of the tower. Please know Rogers relies on government experts to set standards for safety. In Canada, Health Canada has established Safety Code 6 to ensure public safety. The limits specified in Health Canada's SC6 exposure guidelines are based upon review of thousands of peer-reviewed scientific studies of the health impacts of RF energy. SC6 take into consideration the existing EMF energy and the calculations are cumulative to include all surrounding local sites. Should you have further questions regarding the research behind Safety Code 6 regulation or the regulation itself, we encourage those in the community to contact Health Canada at: ccrpb-pcrpcc@hc-sc.gc.ca.</p> <p>Should you have additional comments/concerns please respond within the next 14 days.</p> <p>Sincerely,</p> <p>Tawny Verigin Cypress Land Services Inc. Agents to Rogers</p>	15-Jul
Public Meeting Comment sheet	We already have at least 3 cell towers within a 1km radius of the proposed new cell tower (at Meadows Gardens Gold Course) I don't want a 4th	non-support	<p>Dear [REDACTED],</p> <p>Thank you for attending the Public Information Meeting on July 10th and providing your comments regarding the proposed monopole wireless communications facility at the Meadow Gardens Golf Course in Pitt Meadows.</p> <p>On your comment sheet you stated you have 3 cell towers within a 1km radius and don't want a 4th. When a telecommunications carrier determining a location for new wireless installation it must consider a number of factors to ensure the new installation operates effectively and results in improved wireless services for the immediate community.</p>	15-Jul

			<p>Some of the considerations include frequency of operation, local topography, patterns of wireless users, building heights, road patterns, availability of land and existing structures. Many households rely on wireless service as their only means of communication to meet their personal, business and emergency needs. Rogers has made an attempt to set the structure back from the homes and road on the large golf course property. The proposed tower has been designed to mimic the 20 other driving range poles that are next to the tower location and we are proposing to paint it green to further reduce visibility. Please note, Industry Canada's Reports on the National Antenna Tower Policy states research does not indicate a correlation between property value and tower location.</p> <p>Should you have additional comments/concerns please respond within the next 14 days.</p> <p>Sincerely,</p> <p>Tawny Verigin Cypress Land Services Inc. Agents to Rogers</p>	
Public Meeting Comment sheet	Too many towers in Pitt Meadows already. Don't want it - don't need it	non-support	<p>Dear [REDACTED], Thank you for attending the Public Information Meeting on July 10th and providing your comments regarding the proposed monopole wireless communications facility at the Meadow Gardens Golf Course in Pitt Meadows. On your comment sheet you stated you feel there are too many towers in Pitt Meadows already. When a telecommunications carrier determining a location for new wireless installation it must consider a number of factors to ensure the new installation operates effectively and results in improved wireless services for the immediate community. Some of the considerations include frequency of operation, local topography, patterns of wireless users, building heights, road patterns, availability of land and existing structures. Many households rely on wireless service as their only means of communication to meet their personal, business and emergency needs. Rogers has made an attempt to set the structure back from the homes and road on the large golf course property. The proposed tower has been designed to mimic the 20 other driving range poles that are next to the tower location and we are proposing to paint it green to further reduce visibility. Should you have additional comments/concerns please respond within the next 14 days. Sincerely, Tawny Verigin Cypress Land Services Inc. Agents to Rogers</p>	15-Jul
Public Meeting Comment sheet	YES	Support	N/A	15-Jul
Public Meeting Comment sheet	Having cancer I am opposed to this tower due to radiation. Many cancer deaths in my family	non-support	<p>Dear [REDACTED],</p> <p>Thank you for attending the Public Information Meeting on July 10th and providing your comments regarding the proposed monopole wireless communications facility at the Meadow Gardens Golf Course in Pitt Meadows.</p> <p>On you comment sheet you expressed concerns of health and safety of the tower. Please know Rogers relies on government experts to set standards for safety. In Canada, Health Canada has established Safety Code 6 to ensure public safety. The limits specified in Health Canada's SC6 exposure guidelines are based upon review of thousands of peer-reviewed scientific studies of the health impacts of RF energy. SC6 take into</p>	N/A

			<p>consideration the existing EMF energy and the calculations are cumulative to include all surrounding local sites. Should you have further questions regarding the research behind Safety Code 6 regulation or the regulation itself, we encourage those in the community to contact Heath Canada at: ccrpb-pcrpcc@hc-sc.gc.ca.</p> <p>Should you have additional comments/concerns please respond within the next 14 days.</p> <p>Sincerely,</p> <p>Tawny Verigin Cypress Land Services Inc. Agents to Rogers</p>	
Public Meeting Comment sheet	Due to multiple cancer deaths in my family, I am against the wireless Rogers Communications installed due to radiation	non-support	<p>Dear [REDACTED],</p> <p>Thank you for attending the Public Information Meeting on July 10th and providing your comments regarding the proposed monopole wireless communications facility at the Meadow Gardens Golf Course in Pitt Meadows.</p> <p>On you comment sheet you expressed concerns of health and safety of the tower. Please know Rogers relies on government experts to set standards for safety. In Canada, Health Canada has established Safety Code 6 to ensure public safety. The limits specified in Health Canada's SC6 exposure guidelines are based upon review of thousands of peer-reviewed scientific studies of the health impacts of RF energy. SC6 take into consideration the existing EMF energy and the calculations are cumulative to include all surrounding local sites. Should you have further questions regarding the research behind Safety Code 6 regulation or the regulation itself, we encourage those in the community to contact Heath Canada at: ccrpb-pcrpcc@hc-sc.gc.ca.</p> <p>Should you have additional comments/concerns please respond within the next 14 days.</p> <p>Sincerely,</p> <p>Tawny Verigin Cypress Land Services Inc. Agents to Rogers</p>	15-Jul
Public Meeting Comment sheet	voting "yes"	support	N/A	15-Jul
comment sheet	<p>This tower would be unsightly and destroy the beauty of this area. We already are dealing with the ugly concrete barrier fence and pollution from the ever increasing traffic. This tower would spoil this pristine community and devalue our homes.</p> <p>We have cancer in our family and there is no 100% assurity this tower is not a health hazard. My entire family is opposed to this tower. Put this tower in an area not in the vicinity of residential homes.</p>	non-support	<p>Hi [REDACTED],</p> <p>Thank you for providing your comments regarding the proposed monopole wireless communication facility at the Meadow Gardens Golf Course in Pitt Meadows.</p> <p>On your comment sheet you expressed concerns of the appearance of the proposed wireless facility. Please know, Rogers carefully designed and located the proposed installation to limit the visibility of the pole within in the vicinity of 20 other driving range poles in an attempt to mimic what is already existing in this area, and set the installation</p>	N/A

			<p>back from the road behind the poles and netting. The addition of one more pole has a very minimal impact to the driving range when viewed from surrounding roads and properties. Further to this, the installation is proposed on a large property adjacent at a major highway intersection (Lougheed and Golden Ears Way) – a location typical of commercial activities including wireless antenna installations. The pole is proposed to be five (5) metres higher than the existing driving range poles, painted dark grey to match the existing poles with the antennas mounted directly to the pole.</p> <p>You also expressed concerns health and safety of the tower. Please know Rogers relies on government experts to set standards for safety. In Canada, Health Canada has established Safety Code 6 to ensure public safety. The limits specified in Health Canada’s SC6 exposure guidelines are based upon review of thousands of peer-reviewed scientific studies of the health impacts of RF energy. SC6 take into consideration the existing EMF energy and the calculations are cumulative to include all surrounding local sites. Should you have further questions regarding the research behind Safety Code 6 regulation or the regulation itself, we encourage those in the community to contact Heath Canada at: ccrpb-pcrpcc@hc-sc.gc.ca.</p> <p>Please know, similar monopole installations have not impacted property values as they are minimal in scale and blend in with the existing surroundings while providing improved services to the community.</p> <p>Should you have additional comments/concerns please respond within the next 14 days.</p> <p>Regards,</p> <p>Tawny Verigin Cypress Land Services Inc. Agents for Rogers Communications Inc.</p>	
comment sheet	<p>This tower would be unsightly and we are strongly opposed to it. We already have to deal with the concrete barrier fence along Golden Ears Way Abernathy Connector and the increasing traffic. We have cancer in our family and there is no 100% assurity this tower is not a health hazard. We are strongly opposed to this tower.</p>	non-support	<p>Hi [REDACTED], Thank you for providing your comments regarding the proposed monopole wireless communication facility at the Meadow Gardens Golf Course in Pitt Meadows. On your comment sheet you expressed concerns of the appearance of the proposed wireless facility. Please know, Rogers carefully designed and located the proposed installation to limit the visibility of the pole within in the vicinity of 20 other driving range poles in an attempt to mimic what is already existing in this area, and set the installation back from the road behind the poles and netting. The addition of one more pole has a very minimal impact to the driving range when viewed from surrounding roads and properties. Further to this, the installation is proposed on a large property adjacent at a major highway intersection (Lougheed and Golden Ears Way) – a location typical of commercial activities including wireless antenna installations. The pole is proposed to be five (5) metres higher than the existing driving range poles, painted dark grey to match the existing poles with the antennas mounted directly to the pole. You also expressed concerns health and safety of the tower. Please know Rogers relies on government experts to set standards for safety. In Canada, Health Canada has established Safety Code 6 to ensure public safety. The limits specified in Health Canada’s SC6 exposure guidelines are based upon review of thousands of peer-reviewed scientific studies of the health impacts of RF energy. SC6 take into consideration the existing EMF energy and the calculations are cumulative to include all surrounding local sites. Should you have further questions regarding the research behind Safety Code 6 regulation or the regulation itself, we encourage those in the community to contact Heath Canada at:</p>	17-Jul

			ccrpb-pcrpcc@hc-sc.gc.ca.Should you have additional comments/concerns please respond within the next 14 days.Regards,Tawny VeriginCypress Land Services Inc.Agents for Rogers Communications Inc.	
comment sheet	<p>This tower would be unsightly and destroy the look of this area. We already have to deal with the ugly concrete barrier fence and ever increasing pollution from the traffic. This is not an ideal place for this tower. Why would you even consider spoiling this area!</p> <p>We have cancer in our family and there is no 100% assurity this tower is not a health hazard. My entire family is opposed to this tower. Put this tower in a commercial area don't spoil the pristineness of this area.</p>	non-support	<p>Hi [REDACTED],</p> <p>Thank you for providing your comments regarding the proposed monopole wireless communication facility at the Meadow Gardens Golf Course in Pitt Meadows.</p> <p>On your comment sheet you expressed concerns of the appearance of the proposed wireless facility. Please know, Rogers carefully designed and located the proposed installation to limit the visibility of the pole within in the vicinity of 20 other driving range poles in an attempt to mimic what is already existing in this area, and set the installation back from the road behind the poles and netting. The addition of one more pole has a very minimal impact to the driving range when viewed from surrounding roads and properties. Further to this, the installation is proposed on a large property adjacent at a major highway intersection (Lougheed and Golden Ears Way) – a location typical of commercial activities including wireless antenna installations. The pole is proposed to be five (5) metres higher than the existing driving range poles, painted dark grey to match the existing poles with the antennas mounted directly to the pole.</p> <p>You also expressed concerns health and safety of the tower. Please know Rogers relies on government experts to set standards for safety. In Canada, Health Canada has established Safety Code 6 to ensure public safety. The limits specified in Health Canada's SC6 exposure guidelines are based upon review of thousands of peer-reviewed scientific studies of the health impacts of RF energy. SC6 take into consideration the existing EMF energy and the calculations are cumulative to include all surrounding local sites. Should you have further questions regarding the research behind Safety Code 6 regulation or the regulation itself, we encourage those in the community to contact Heath Canada at: ccrpb-pcrpcc@hc-sc.gc.ca.</p> <p>Should you have additional comments/concerns please respond within the next 14 days.</p> <p>Regards,</p> <p>Tawny Verigin Cypress Land Services Inc. Agents for Rogers Communications Inc.</p>	17-Jul
comment sheet	<p>This tower would be unsightly and we are strongly opposed to it. We already have to deal with the ugly concrete barrier fence along Golden Ears Way/ Abernathy Connector and the increasing traffic. This tower would ruin the beautiful view. This is not the place for a tower.</p> <p>We have cancer in our family and there is no 100% assurity this tower is not a health hazard. We are strongly opposed to this tower.</p>	non-support	<p>Hi [REDACTED]</p> <p>Thank you for providing your comments regarding the proposed monopole wireless communication facility at the Meadow Gardens Golf Course in Pitt Meadows.</p> <p>On your comment sheet you expressed concerns of the appearance of the proposed wireless facility. Please know, Rogers carefully designed and located the proposed installation to limit the visibility of the pole within in the vicinity of 20 other driving range poles in an attempt to mimic what is already existing in this area, and set the installation back from the road behind the poles and netting. The addition of one more pole has a very minimal impact to the driving range when viewed from surrounding roads and</p>	

			<p>properties. Further to this, the installation is proposed on a large property adjacent at a major highway intersection (Lougheed and Golden Ears Way) – a location typical of commercial activities including wireless antenna installations. The pole is proposed to be five (5) metres higher than the existing driving range poles, painted dark grey to match the existing poles with the antennas mounted directly to the pole.</p> <p>You also expressed concerns health and safety of the tower. Please know Rogers relies on government experts to set standards for safety. In Canada, Health Canada has established Safety Code 6 to ensure public safety. The limits specified in Health Canada’s SC6 exposure guidelines are based upon review of thousands of peer-reviewed scientific studies of the health impacts of RF energy. SC6 take into consideration the existing EMF energy and the calculations are cumulative to include all surrounding local sites. Should you have further questions regarding the research behind Safety Code 6 regulation or the regulation itself, we encourage those in the community to contact Heath Canada at: ccrpb-pcrpcc@hc-sc.gc.ca.</p> <p>Should you have additional comments/concerns please respond within the next 14 days.</p> <p>Regards,</p> <p>Tawny Verigin Cypress Land Services Inc. Agents for Rogers Communications Inc.</p>	
comment sheet	<p>This tower would be unsightly and we are strongly opposed to it. We already have to deal with the ugly concrete barrier fence along Golden Ears Way/ Abernathy Connector and the increasing traffic.</p> <p>We have cancer in our family and there is no 100% assurity this tower is not a health hazard. We do not want this tower.</p>		<p>Hi [REDACTED],</p> <p>Thank you for providing your comments regarding the proposed monopole wireless communication facility at the Meadow Gardens Golf Course in Pitt Meadows.</p> <p>On your comment sheet you expressed concerns of the appearance of the proposed wireless facility. Please know, Rogers carefully designed and located the proposed installation to limit the visibility of the pole within in the vicinity of 20 other driving range poles in an attempt to mimic what is already existing in this area, and set the installation back from the road behind the poles and netting. The addition of one more pole has a very minimal impact to the driving range when viewed from surrounding roads and properties. Further to this, the installation is proposed on a large property adjacent at a major highway intersection (Lougheed and Golden Ears Way) – a location typical of commercial activities including wireless antenna installations. The pole is proposed to be five (5) metres higher than the existing driving range poles, painted dark grey to match the existing poles with the antennas mounted directly to the pole.</p> <p>You also expressed concerns health and safety of the tower. Please know Rogers relies on government experts to set standards for safety. In Canada, Health Canada has established Safety Code 6 to ensure public safety. The limits specified in Health Canada’s SC6 exposure guidelines are based upon review of thousands of peer-reviewed scientific studies of the health impacts of RF energy. SC6 take into consideration the existing EMF energy and the calculations are cumulative to include all surrounding local sites. Should you have further questions regarding the research behind Safety Code 6 regulation or the regulation itself, we encourage those in the community to contact Heath Canada at:</p>	

			<p>ccrpb-pcrpcc@hc-sc.gc.ca.</p> <p>Should you have additional comments/concerns please respond within the next 14 days.</p> <p>Regards,</p> <p>Tawny Verigin Cypress Land Services Inc. Agents for Rogers Communications Inc.</p>	
comment sheet	<p>I have read comments and studies regarding pro or against cell tower installations. I tend to agree that installing them too close to inhabited places will affect people's health after an extended exposure to the microwaves emitted. While the site chosen to install the tower might be less expensive than others, there are plenty of choices when it comes to caring about the people you are supposed to serve. You will be better advised to reconsider the plan and choose a better location. After all, we are supposed to be treated just as you would treat your own family.</p>	non-support	<p>Hi [REDACTED], Thank you for providing your comments regarding the proposed monopole wireless communication facility at the Meadow Gardens Golf Course in Pitt Meadows. On your comment sheet you expressed concerns health and safety of the installation. Please know Rogers relies on government experts to set standards for safety. In Canada, Health Canada has established Safety Code 6 to ensure public safety. The limits specified in Health Canada's SC6 exposure guidelines are based upon review of thousands of peer-reviewed scientific studies of the health impacts of RF energy. SC6 take into consideration the existing EMF energy and the calculations are cumulative to include all surrounding local sites. Should you have further questions regarding the research behind Safety Code 6 regulation or the regulation itself, we encourage those in the community to contact Health Canada at: ccrpb-pcrpcc@hc-sc.gc.ca. When a telecommunications carrier determines a location for new wireless installation it must consider a number of factors to ensure the new installation operates effectively and results in improved wireless services for the immediate community. Some of the considerations include frequency of operation, local topography, patterns of wireless users, building heights, road patterns, availability of land and existing structures. Many households rely on wireless service as their only means of communication to meet their personal, business and emergency needs. Rogers has made an attempt to set the structure back from the homes and road on the large golf course property. The proposed tower has been designed to mimic the 20 other driving range poles that are next to the tower location and we are proposing to paint it grey to blend in with the surroundings. Should you have additional comments/concerns please respond within the next 14 days. Regards, Tawny Verigin Cypress Land Services Inc. Agents for Rogers Communications Inc.</p>	17-Jul
comment sheet	<p>We attended the public consultation on July 10, 2019. First of all there was a conflict of interest by having it at Meadow Gardens instead of a neutral location. The drop in format was a way to keep people divided and not able to ask questions publicly. The info and photo on some of the boards was deceiving. For example, the photos of the monopole were photoshopped to make the pole look smaller & darker. We realize it is to be 20 ft higher than the 100 ft netting poles. Not many people could be accommodated at the meeting not many places to sit and no refreshments. Everyone there was against the proposed cell tower but felt that their concerns didn't matter anyways. Rogers can't guarantee that safety of the cell towers even though they claim to be within Safety Code 6. Safety Code 6 is based on outdated information.</p>	non-support	<p>Hi [REDACTED],</p> <p>Thank you for attending the Public Information Meeting on July 10th and providing your comments regarding the proposed monopole wireless communications facility at the Meadow Gardens Golf Course in Pitt Meadows.</p> <p>You expressed concern regarding the accuracy of the photo-rendering next to the driving range. This rendering is very accurate. The photo rendering is taken from the closest location the tower could be viewed by the public (from Golden Ears Way approx. 130 away). Rogers has made an attempt to set the structure back from the homes and road on the large golf course property. The proposed tower has been designed to mimic the 20 other driving range poles that are next to the tower location and we are proposing to paint it grey to further reduce visibility. The pole is proposed to be five (5) metres higher than the existing driving range poles with the antennas mounted directly to the pole. The pole will be slightly wider in diameter than the existing driving range poles as depicted in</p>	17-Jul

			<p>the photo-rendering. The photo-rendering we completed displays the proposed pole within the context of the driving range. The addition of one more pole has a very minimal impact to the driving range when viewed from surrounding roads and properties. Further to this, the installation is proposed on a large property adjacent at a major highway intersection (Lougheed and Golden Ears Way) – a location typical of commercial activities including wireless antenna installations.</p> <p>You expressed concern regarding the public consultation process and location of the public meeting venue. The location of the public meeting was chosen to easily accommodate nearby residents in order for them to attend and for Rogers to receive feedback. We recognize that not all attendees have the same questions or concerns, so the drop in format is an opportunity for the public to speak with specialized representatives that can speak to various aspects of the project. Please note that Rogers is following the City of Pitt Meadows consultation process for wireless antenna installations. This process is far more rigorous than typical public consultations for wireless antenna installations.</p> <p>On your comment sheet you expressed concerns health and safety of the installation. Please know Rogers relies on government experts to set standards for safety. In Canada, Health Canada has established Safety Code 6 to ensure public safety. The limits specified in Health Canada’s SC6 exposure guidelines are based upon review of thousands of peer-reviewed scientific studies of the health impacts of RF energy. SC6 take into consideration the existing EMF energy and the calculations are cumulative to include all surrounding local sites. Should you have further questions regarding the research behind Safety Code 6 regulation or the regulation itself, we encourage those in the community to contact Heath Canada at: ccrpb-pcrpcc@hc-sc.gc.ca.</p> <p>Should you have additional comments/concerns please respond within the next 14 days.</p> <p>Regards,</p> <p>Tawny Verigin Cypress Land Services Inc. Agents for Rogers Communications Inc.</p>	
Email	<p>Thank you for your letter outlining the project to install a wireless tower at Meadow Gardens, Pitt Meadows.</p> <p>I support this project</p>	Support	N/A	17-Jul
Email	<p>Attention Tawny Verigin: Re: Proposed Wireless Communication site at Meadow Gardens Golf Course: Dear Tawny and Rogers Communications, I received your communication regarding your intention to install a monopole wireless communications facility at the Meadow Gardens Golf Course in Pitt Meadows, my neighbourhood. I am totally against this installation. I also note that you have deliberately used very dark sky photos in the rendition of how the pole will appear when installed. I am upset that you have to stoop to such dirty tactics to</p>	non-support		

<p>get your information across to the public. You should have used a normal blue sky to show the pole but anyone with a brain in their head can see you have deliberately chosen a very dark sky (obviously Photoshopped) to try and hide the dark pole so that it fades into the background. Also I have noted that your simulated renditions of the tower are “not to scale”. Really!!!! Again please give the public at least the courtesy of having some common sense to realize this is a very clever cover up of what should be an accurate rendition of the information.</p> <p>I strongly object to this installation so close to residential neighborhoods where our most vulnerable citizens, namely children live. Many studies have been shown that living close to such installations indeed have many health risks.</p> <p>In one study, doctors examined close to 1000 patients to see if living close to a cell tower for 10 years affected cancer risk. The social and age differences within the study group were small, with no ethnic diversity. They discovered that the proportion of newly developed cancer cases was three times higher for those living within 1300 feet (a quarter of a mile) of a cellular transmitter compared to those living further away. In addition, they found that the patients became ill with cancer on average 8 years earlier.</p> <p>Another important observation from the research is that for the first 5 years of living near a cell phone tower, the risks were no different than someone living far away from one. However, in years 6-10, the cancer risks jumped more than threefold for those living a quarter of a mile or less from a mobile tower. Even more concerning, the average age of diagnosis was much younger. Risk for breast cancer, prostate, pancreas, bowel, melanoma, lung, and blood cancer all increased substantially. The risks for breast cancer were most significant for those living in the inner area, with an average age of 50.8 year for a cancer diagnosis compared with nearly two decades.</p> <p>When you have so many other locations of vacant land between the Pitt River Bridge and Harris Road on the North Side to choose from it is highly concerning to me that you deliberately choose to locate this installation so close to residential homes that are already struggling with high traffic volume and pollution. Young children are especially at risk and it is our duty to think about the younger generation and the consequences of our actions relating to them.</p> <p>Also, there are quite a few choices of land away from residential homes on the Northside of Pitt Meadows down towards the dyke. There are many other responsible choices you could make if you choose to do so. We are bombarded with wireless technology day and night. At least in our own homes we have the ability to turn off cell phones and wireless routers. However forcing people to live close to Monopole wireless communication poles is very unfair and damaging to peoples health as they are never switched off exposing residents to a constant barrage of wireless 24hrs.whether they like it or not. Also whether they have health issues or not and whether they are sensitive to wireless or not. In fact some schools have had to turn off wireless communications because it</p>			
--	--	--	--

	<p>was found to be affecting children adversely.</p> <p>The location of this monopole wireless communication facility at this particular site so close to houses and children is not acceptable under any circumstances. Think again Rogers, our health is more important.</p> <p>Thank you</p>			
				25-Jun
Email	<p>Hi Tawny,</p> <p>Thank you for your email. Actually your rendition is nothing like what the cell tower will look like. It would have been more accurate to give people a real indication of what these monopole cell tower structures look like. I am attaching one of these facilities and think the one you are proposing to install would be more like this one. I think it is quite disgusting that you can't be more up front and honest about what you are proposing to do.</p> <p>We have done quite a bit of research about the harmful effects that these installations cause. After 5 years cancer of all types. I have a friend out in Mission who lives very close to one of these facilities and it really affects their dog. It will only sleep in one closet because it bothers him. Also they have friends that come to visit and have to leave as every time they are in their home and the garden they get horrible migraine headaches.</p> <p>I also heard yesterday from a 'golfer' who said you were paying the golf course enough money for this installation that they would be able to pay for the new car park they were planning to do. My gosh what a terrible thing to hear. I guess we can all sit in the cancer ward getting our chemotherapy treatments and admire a photo of the new car park while we watch our hair fall out!</p> <p>On a side note. I have the ability to turn off my cell phone. I have the ability and do choose to turn off my wireless router and not own or use a microwave. However with this type of cell tower near my home, I do not have that ability. It is a bombardment of electromagnetic waves 24 hours a day. I would never have moved into this neighbourhood if I knew it was anywhere near such a tower.</p> <p>Also, I don't believe any studies have been done on the accumulation of multiple cell towers and networks all together. Health Canada tests perhaps one such installation but not many of them together which amplify the harmful effects on people, insects and birds.</p> <p>New studies are coming out showing health risks associated with such cell towers. I have a Rogers cell phone and I don't have a problem with reception, dropped calls or issues such as that. I also turn it off when I don't need to use it. We really don't need another cell tower in this immediate area. I urge you to do the installation further from residential homes. We must consider the children and their sensitivity to these</p>			25-Jun

	installations. Many schools have had to turn off the wireless because it has been shown to affect young kids.			
	<p>The argument about people needing cell phones for emergencies is ridiculous. TELUS offer land line phones at less than \$20 a month. Cell phones are becoming a younger generation “cult” and many of them are too young to understand the health risks. You have the ability to site such installations away from residential neighborhoods, in commercial areas and on land away from homes. I urge you to look hard at the health effects of such a tower in this immediate neighbourhood and do the right thing and put it somewhere else. I value my health - I don’t want to take a 1% risk of getting cancer/brain cancer just because the Golf course want to pay for a new car park. Really ?</p> <p>Your rendition is less than honest.</p> <p>Regards,</p> <p>[REDACTED]</p>			
Email	Hi Tawny,I would appreciate a proper photograph of the proposed tower and confirmation that it is a 5G network. The letter does not give proper details.Thank you,[REDACTED]	Support	<p>Hi [REDACTED],</p> <p>Thanks for your support for the project!</p> <p>Regards, Tawny Verigin Cypress Land Services Inc. Agents for Rogers Communications Inc.</p>	08-Jul
Public Meeting Comment sheet	<p>I do not want this cell tower in my neighbourhood. I object to the installation of a cell tower- it is harmful to children, adults, bees and birds.</p> <p>No - Not here</p>	non-support	<p>Hi [REDACTED],</p> <p>Thank you for providing your comments regarding the proposed monopole wireless communications facility at the Meadow Gardens Golf Course in Pitt Meadows.</p> <p>In your email you commented on the photo-simulation. The installation is proposed to be located next to 20 other driving range poles. We are proposing to paint it green and feel this is a close representation of what the facility will look like if it is built. Please note, the photo-simulation is for conceptual purposes.</p> <p>In your email you expressed concerns health and safety of the tower. Please know Rogers relies on government experts to set standards for safety. In Canada, Health Canada has established Safety Code 6 to ensure public safety. The limits specified in Health Canada’s SC6 exposure guidelines are based upon review of thousands of peer-reviewed scientific studies of the health impacts of RF energy. SC6 take into consideration the existing EMF energy and the calculations are cumulative to include all surrounding local sites. Should you have further questions regarding the research behind Safety Code 6 regulation or the regulation itself, we encourage those in the community to contact Heath Canada at: ccrpb-pcrpcc@hc-sc.gc.ca.</p> <p>In your email you also expressed concerns of location. When a telecommunications</p>	

			<p>carrier determining a location for new wireless installation it must consider a number of factors to ensure the new installation operates effectively and results in improved wireless services for the immediate community. Some of the considerations include frequency of operation, local topography, patterns of wireless users, building heights, road patterns, availability of land and existing structures. Many households rely on wireless service as their only means of communication to meet their personal, business and emergency needs. Rogers has selected a location for the monopole structure in the vicinity of 20 other driving range poles in an attempt to mimic what is already existing in this area, and set back from the road behind the poles and netting. We appreciate your suggestion for a site down by the Pitt River Bridge and Harris Road on the North Side, however, these areas are 2-4 kilometers from the area Rogers is trying to service, so unfortunately the locations do not meet the network improvement requirements.</p> <p>Should you have additional comments/concerns please respond within the next 21 days.</p> <p>Regards,</p> <p>Tawny Verigin Cypress Land Services Inc. Agents for Rogers Communications Inc.</p>	
Email	<p>Hi Tawny,</p> <p>I asked for a proper photograph of a close up of the actual top of the tower. The simulation (Photoshopped) is too far away to see what the top will look like.</p> <p>Regardless, a large number of residents I have spoken to tell me that they have not received a copy of the letter you sent out and were completely unaware of your proposed installation. We understand that when approved 5 G can be added to this monopole whenever you choose.</p> <p>As we have a large amount of seniors in our subdivision I think it is really upsetting to be given a black sky with a simulation of a black pole at great distance. In my opinion this is not an accurate or fair description or photograph of what you are intending to install. When you deal with Seniors it is your responsibility to be fair and objective with your information. Also, a great many of our residents are away on summer vacations and if the letters had been sent to them in their absence they would not have received them. The time line you have given is much too short.</p> <p>No close up photos were given of the pole.</p> <p>I rest my case.</p> <p>Regards, [REDACTED]</p>			N/A
Email	TO WHOM IT MAY CONCERN:		Hi [REDACTED],	N/A

	<p>Rogers Communications Inc. ISED Lower Mainland District Office: Taw3ny Verigin Rogers c/o cypress Land Services: Dana K. Parr City of Pitt Meadows: Mayor Dingwall and Pitt Meadows Council: Kate Barchard, Pitt Meadows City: Mayor and Council Maple Ridge: Dan Rummy MLA Maple Ridge: Lisa Beare MLA Pitt Meadows:</p> <p>Re: Petitions opposing the proposed installation of a monopole wireless communications facility and fenced equipment area to be located at the Meadow Gardens Golf Course at 19675 Meadow Gardens Way, Pitt Meadows. BC.</p> <p>Please find attached a copy of the cover letter and 21 pages of petitions opposing the installation of a monopole wireless communication facility and fenced equipment area to be located at the Meadow Gardens Golf Course at 19675 Meadow Gardens Way, Pitt Meadows. BC. (PID 002-998-581). The letter and attached petitions were personally handed to Kate Barchard Executive Assistant to the Mayor and Council of Pitt Meadows this afternoon.</p> <p>Since the proposed installation is on the border of Pitt Meadows and Maple Ridge we are forwarding a copy of our petitions to the Mayor and Council of Maple Ridge as a courtesy. We are also asking for the time period for public consultation be extended until the end of August as many residents are either away on extended summer vacations and/or have indicated that they did not receive the letter from Rogers and would like to sign the Petition.</p>		<p>The proposed design is a solid monopole structure, painted green with flush mounted antennas. The image you have provided is a completely different design of a galvanized steel lattice self-support structure with a pinwheel antenna array mounted at the top. The photo-simulation is an accurate rendition of the proposed design.</p> <p>Thanks Tawny</p>	
16-Jul	TO WHOM IT MAY CONCERN			N/A
	<p>Re: The proposed installation of a monopole wireless communications facility and fenced equipment area to be located at the Meadow Gardens Golf Course at 19675 Meadow Gardens Way, Pitt Meadows. BC. (PID 002-998-581).</p> <p>Within the Boundaries of North to 128th Avenue, South to Hammond Road, West to Bonson Road and East to 203rd Street. Including the subdivision at 19639 Meadow Gardens Way, Pitt Meadows and 19673 and 19677 Meadow Gardens Way, Pitt Meadows BC.</p> <p>I would like to voice my personal comments regarding the proposed installation of a monopole wireless communication facility and fenced equipment area as above.</p>		<p>Hi [REDACTED],Please find the photo simulation attached and a copy of the plans showing the tower design. We feel this is accurate. 5G has not been deployed in Canada. The current design of the tower does not include 5G.ThanksTawny</p>	17-Jul

	<p>Unfortunately a large amount of signed petitions on the Noticeboard at the Fairways apartments at 19673 and 19677 Meadow Gardens Way appear to have been deliberately removed and destroyed. We have no way of know who signed them or how to let those residents know that their voices will now not be heard as they have been obliterated. The residents will think their petitions have submitted and they have not. This is a shocking event and an unspeakable act of intentional destruction.</p> <p>1) A large amount of people in the immediate area did not receive the letter that Rogers Communications sent out regarding information about the proposed installation of a Cell tower with details of a 2 hour Public information meeting to be held on July 10th at the Meadow Gardens Golf Course. In fact, when asked the majority of residents did not know anything about the proposed installation and/or deadline of July 17th for comments regarding the above matter. Also, many residents are away on extended summer vacation so would not have seen the letter. Therefore the requirement that Rogers consult with the nearby public and local municipality was not, in my opinion, conducted in a proper and fair manner. The time-line given was much too short. People have indicated that if given more time and they would have known about this they would have signed the petition. Therefore I am asking for the deadline of July 17th to be extended until the end of August to give those people an opportunity to voice their opinions. Although the letter sent to me was dated June 17th last I did not receive it anywhere close to that date.</p> <p>2) The photo simulation contained in the Rogers letter, in my opinion, was not a fair or "close representation" of a 'before' and 'after' visualization and did not in any way show an accurate rendition of how the proposed monopole would properly appear. (**Attached) In face it was, in my opinion, clearly deliberately taken at a great distance and 'Photoshopped' to show a 'matchstick' black pole against a black sky in what appears to be an attempt to mislead the residents. I do not believe that this is in any wat showed a proper close-up of how the top of the pole would look or an accurate picture of the intended height of approximately 120 feet and appearance as a whole. I am attaching what I believe is amore accurate photo of a monopole and electrical facility which has not been edited. I took this photo this morning and it was not shown to the petitioners as I still have not been able to obtain this information from Rogers. When you are dealing with seniors I believe that it behoves people and Companies to provide accurate information and in the clearest way possible. Many seniors do not have computers, email addresses or cell phones and it is everyone's responsibility to explain information properly and give them more time in which to process and digest any information. 3) I attach herewith brief research showing that cancer rates do increase closer to cell towers and that this also includes other health problems including headaches, memory loss, cardiovascular stress, low sperm count, electromagnetic hypersensitivity. Children due to their thin skulls and developing brains are more vulnerable. In fact, the risk of newly developing cancer was three times higher among patients who had lived</p>			
--	---	--	--	--

	<p>during the past ten years within a distance of 400 metres from a cellular transmitter in comparison to those who lived further away. Pollination bees and birds are also affected which is unfortunate since Pitt Meadows has blueberry fields and agriculture that relies on pollinating bees.4) We understand there is no monitoring of cell towers once installed and that other mobile companies can be invited to collocate on the proposed monopole if constructed. We also understand that if 5G is approved that it can also be installed on such poles in the future.5) I respectfully ask Mayor and Council of Pitt Meadows to view the EMBRAC.CA website where more information can be obtained.6) As the boundaries include Maple Ridge residents I am forwarding copies of this letter and attachments to the Mayor and Council of Maple Ridge as a courtesy. Our children's health and well being must be considered and indeed the health of all Pitt Meadows and Maple Ridge residents. Currently we have the ability to turn off cell phones and wireless routers in our own homes so that we are not exposed to overloads of wireless. However, with the installation of Cell towers that choice is being removed and people are now being forced to endure 24 hours of unwanted electromagnetic waves. The wireless technology is new and as such we should proceed with caution wherever possible. Cell towers are popping up in alarming numbers and it is a huge concern that there are now so many of them and all so close together. Fibre optics appear to be a much safer alternative. In this area the residents are already subject to pollution from the close proximity of 6 lanes of Lougheed Highway traffic and oversized hydro poles. To add a Cell tower to that mix cannot be a healthy option.</p>			
Email	<p>Hi Chad, Thank you for your response to my letter. Unfortunately despite repeated requests to Rogers I have still not been given a proper photograph showing exactly what a close up of this proposed "pole"/cell tower will look like. Obviously there is a reason I am not being given this information. Regardless, it is not the appearance of the pole that is concerning residents. As you have noted in your email, a number of people attending your (2 hour) open house expressed concerns related to health and safety. Although profit motivated Telecommunication Companies wish to assure citizens that the clusters of Cell towers they are installing at multiple locations are safe, recent documentation is proving that these cell towers are in fact causing cancer and other related health issues. Recent reports and data appear to be ignored. In fact in a conversation with an ISED representative this morning, he advised me that as they deal with 'all of Canada' they are too busy to deal with individual cell towers and any issues. He stated that any paperwork addressed to them is merely read and then filed. Therefore, people reporting symptoms caused from living close to Cell towers are not being monitored. As you have aptly noted in your last paragraph, local municipalities and health authorities do not regulate, or it seems, monitor the safety of the wireless antenna installations once installed and related illness caused thereof. Research may have "originally" centered around one cell tower but I</p>		N/A	

	<p>seriously doubt any research has been done to include the large amount of multiple towers that are being installed at an alarming rate. I have downloaded a map of the area and the amount of cell towers is frightening. If you have research regarding health effects from multiple cell towers all together that was conducted within the past 2 years please forward it to me as I am not aware of any recent studies. As it stands, people getting headaches, and health issues may not immediately think they are related to cell Towers. It can be years before symptoms either appear or someone realizes that they are being caused from Cell Towers. I am including a link to a cancer cluster in my close neighbourhood - this particular cancer cluster is close to cell towers. LINK: http://emrabc.ca/?page_id=10887 I was advised by a resident that he was so concerned about his health living close to a Cell tower and this particular cancer cluster that he moved from this location. It is very sad that Citizens and residents health is being ignored and takes a back seat while profit motivated Companies press on to force more and more wireless technology on us regardless of whether we want it or not. We are saying vehemently that we do not.</p> <p>If the health effects are not being properly monitored I disagree with your comments that these installations are safe and not causing problems. I have been told that in some instances schools have had to shut down the wireless in the school due to it causing issues with some of the children. We all know that cancer and memory problems such as dementia are increasing, so are cell towers.</p>			
	<p>While I appreciate you may have mailed out 1700 direct mail notices, many of the residents in my subdivision did not receive them. In fact I myself received 2 identical letters. Obviously some of the letters went astray and others likely remain unopened because the people are away on extended summer vacations. My comments stand, I don't believe the black pole against a black sky photoshopped is a fair indication of how the tower will actually look close up. Your photographer could have easy access and walked onto the Golf Course and taken his photos from there but he did not. The photos are at a remarkable distance so it would have been fair to include a close-up shot of how the pole and antenna at the top would look. However you have not.</p> <p>Frankly what has infuriated me was a comment from a Golfer who golfs at Meadow Gardens stating that he was very happy to have the Cell tower as with the money the Golf Club were receiving from Rogers they had enough money to repave their entire car park. The car park has been entirely repaved obviously with the expectation of receiving money for hosting the Cell Tower. My answer to him was somewhat flip but truthful, "When we are all sitting in the cancer clinic getting our chemotherapy treatments we will be able to admire the photos of the beautiful new car park." Flip perhaps but truthful.</p> <p>If residents living within 488 m of the golf course have to be notified then it follows that there is a reason for the mandatory notification process because there are side effects from these Towers. It is a well known fact that property values decrease close to Cell Towers (no-one wants to live</p>		N/A	

	<p>near a Cell tower). Why not? The reason being is that people don't want to live close to these installations solely because of health concerns. Is Rogers Wireless planning on paying the residents the balance of money that residents will lose between current property values before the Cell tower is installed and "after" installation?</p> <p>Currently I have the choice whether or not to turn off my cell phone. I have the choice to turn off my wireless router. In fact residents have a choice - if they don't want a cell phone they don't have to have one. With the installation of a Cell Tower (whatever its appearance may be) that choice will be taken away from both myself and the residents in the area and we will all be forced to endure RF output regardless 24 hours a day. That is not our choice.</p> <p>I have placed a call to the BC cancer Society to try and find out if the question is being asked of new patients, "do you live close to a Cell tower". Despite multiple calls I have still not been able to get an answer as no-one appears to know. I find this quite disturbing. As I have said in my previous letters, it behooves Telecommunication Companies to listen to residents. If we say, "no" we don't want a Cell tower in our neighbourhood then they have a responsibility to listen and abide by Citizens/Residents wishes. Our health and well being is key to be able to enjoy peaceful quiet enjoyment of our homes uninterrupted by unwanted RF Wireless.</p> <p>We have said "No" so please respect our wishes.</p>			
phone call	<p>[REDACTED] called and spoke to Ivan. Suggests tower should be half the height. Claims technology today will allow for it if you turn up the antenna. He believes it will be twice as high as the existing net poles at 36.5m. He can see the net and poles from his home approx. 450m away and doesn't like the net either. Summary – visual pollution</p>		<p>[REDACTED], – thanks for taking the time to comment on the proposed Rogers wireless installation next to the Meadow Gardens driving range.</p> <p>You expressed concern regarding the public consultation process. Please note that Rogers is following the City of Pitt Meadows consultation process for wireless antenna installations. This process is far more rigorous than typical public consultations for wireless antenna installations. Most public consultation processes across Canada would not require notification to households in the area as the proposed antenna installation is setback a large distance from surrounding homes/properties. That said, everyone within 488m of the golf course property boundary were notified through a direct mail out letter, notices were placed in the local newspaper and a public open house was held. In this instance, over 1700 direct mail notices were sent. The closest home is approximately 150 m away with the vast majority of homes being over half a kilometer away.</p> <p>You expressed concern regarding the accuracy of the photo-rending next to the driving range. This rendering is very accurate. The photo rendering is taken from the closest location the tower could be viewed by the public (from Golden Ears Way approx. 130 away). The pole is proposed to be five (5) metres higher than the existing driving range poles, painted dark grey to match the existing poles with the antennas mounted directly to the pole. The pole will be slightly wider in diameter than the existing driving range poles as depicted in the photo-rending. The photo you supplied is a larger, galvanized pole with the antennas mounted off the tower at the top with a large "pinwheel" structure. The photo-rending we completed displays the proposed pole within the context of the driving range. It should be noted that the design of the installation and location next to the driving range was carefully designed and located to limit the visibility of the pole. As you</p>	

		<p>are likely aware, there are thirty (30) existing driving range poles that hold up the netting. The addition of one more pole has a very minimal impact to the driving range when viewed from surrounding roads and properties. Further to this, the installation is proposed on a large property adjacent at a major highway intersection (Lougheed and Golden Ears Way) – a location typical of commercial activities including wireless antenna installations.</p> <p>You have also expressed concerns related to health and safety (as did a number of folks attending that attended the public open house). Please note health and safety is regulated by Innovation Science and Economic Development (ISED) through standards set by Health Canada. Local municipalities and health authorities do not regulate the safety of wireless antenna installations. Health Canada has established Safety Code 6 (SC6) to ensure public safety and regularly reviews current research. Most installation across Canada are located in close proximity to where people work and live – as this is where the public use their mobile devices. Antenna installations are typically located on the rooftops of apartment buildings, condos, universities, hospitals, seniors homes and are operated to ensure public safety. There are several installations in Pitt Meadows and Maple Ridge currently servicing residents. Most of these installations are far closer to homes than the proposed including installations at the Pitt Meadows Firehall which is in close proximity to hundreds of households. That said, all of these installation are safe and in compliance with SC6 (at all times). The level of RF output of these antenna installation is typical less than that of a wireless internet router found in most homes and school. The proposed installation will be in full compliance with Health Canada’s Safety Code 6 requirements. In fact, it will be thousands of times below the allowable limits permitted by SC6.</p> <p>Regards, Chad Marlatt Agents for Rogers Cypress Land Services</p>	
--	--	---	--

Support: 4

Non-Support: 23

Neutral: 1