

Disclaimer: These minutes were prepared as a reasonable summary of the essential content of this meeting, not as a transcription.



Minutes of the Agricultural Advisory Committee Meeting

November 14, 2024, 10:00 a.m.

Meadows Room

12007 Harris Road, Pitt Meadows, BC V3Y 2B5

Voting Members: A. Aquilini
 J. Bachmann
 H. Bitter
 T. Hopcott
 S. Howkins
 W. Jack
 L. Kemper

Regrets: Drew Bondar, B.C. Ministry of Agriculture and Food
 D. Kosicki
 Councillor Manion
 J. Parmar
 P. Robinson
 T. Vader

Council Liaisons: Councillor Meachen (Alternate)

Guests: Councillor Evans
 C. Johnson, Executive Director from FarmFolk-CityFolk

Staff: M. Baski, Project Manager, Agriculture & Environment (Chair)
 E. Borromeo, Engineering Services Technician
 M. Lockstidt, Assistant Manager of Operations
 S. Maki, Director of Engineering & Operations
 A. Seed, Engineering Technologist

Recording Clerk: T. McCaw, Administrative Services Supervisor

1. CALL TO ORDER

M. Baski, Manager of Agriculture & Environment, acknowledged with respect and gratitude that the City of Pitt Meadows is located on the traditional, unceded territory of ᑕᐢᑕᐢᑭᐢ (Katzie) First Nation who were stewards of this land since time immemorial.

The meeting was called to order at 10:06 AM.

2. LATE ITEMS

There was general consent amongst the committee to move item 5.4 - UBCM Resolutions/Advocacy Discussions of the agenda to item 5.2 when discussing today's agenda.

3. APPROVAL OF AGENDA

There was general consent amongst the committee to approve the November 14, 2024 Agricultural Advisory Committee agenda as amended.

4. ADOPTION OF MINUTES

There was general consent amongst the Committee to approve the minutes from the October 10, 2024 Agricultural Advisory Committee meeting as circulated.

5. NEW BUSINESS

5.1 Farm Folk-CityFolk Systems Presentation

C. Johnson, Executive Director from FarmFolk-CityFolk, provided a PowerPoint presentation on how to support food systems forming a part of the minutes as **Attachment 1.**

** Cllr. Evans joined the meeting at 10:16 AM*

The Committee participated in a discussion with the following main themes noted:

- Support was given to the organization and connecting people to food and local farming;
- Discussions were held around water supplies for farms;

- The question was raised around the definition of “climate friendly food” and whether it included meat and milk? (The presenter confirmed yes, this includes all food that is produced in sustainable ways);
- Questions were raised around Indigenous policies and community support;
- Questions were raised around whether the organization supported the use of cover crops (Yes, the speaker confirmed they did support the use of cover crops and using fertilizer further supporting incorporating sustainable agricultural practices to protect soil and farm land);
- A discussion was held around capital gains tax for farmers encouraging governments to review of the current policies in an effort to support succession farming (A recommendation was made for members to review the [Ecological Gift Program](#) which states that if an individual or corporation donate a portion of their ecologically sensitive land to charity, there is no Capital Gains tax and the donator is given a tax receipt); and
- Questions were raised around marketing and supporting farmers in an effort to increase profits.

5.2 UBCM Resolutions/Advocacy Discussion

The Committee participated in a discussion around the UBCM resolutions/advocacy work to support agriculture, including discussing an on-table handout which forms a part of the minutes as **Attachment 2**.

The Committee participated in a discussion with the following main themes noted:

- High priority items were identified specifically items 1.1, 2.3 & 5.2 on Attachment 2;
- The [BC Agriculture Sector Strategic Priorities](#) was shared specifically speaking to BC’s low ranking in provincial investment in agriculture;
- Support was also given for item 2.1 - the importance of drainage infrastructure to ensure drainage and irrigation network is fully utilized (Staff confirmed that staff is currently reviewing the ditch dredging efforts as well as is reviewing the annual schedule for this work);

- Discussions were held around effectively maintaining ditches throughout the community as new weeds are being introduced into farmers fields when fields are being flooded; and
- Support was given for food system literacy programs.

5.3 Detailed Irrigation Study - Update

S. Maki, Director of Engineering & Operations, provided a verbal update on the Detailed Irrigation Study.

Some of the highlights included:

- Draft Detailed Irrigation Study (DIS) should be brought forward to the AAC end of April for feedback;
- The City has submitted an application for a Short Term Water License which will include an environmental component and an Indigenous consultation;
- Four wells have been installed in the City for this particular study, data collected is currently being reviewed; and
- Transducers have been installed in some of our City ditches for data collection and water conveyance.

The Committee participated in a discussion with the following main themes noted:

- Thanks and support was given for the work that has been completed on this topic;
- Council 2025 budgets were discussed with a recommendation for increased funding for ditch cleaning water availability (Staff confirmed many factors need to be considered and the Detailed Irrigation Study will need to be completed prior to a decision of this nature being made; however, service levels could be reviewed once the DIS has been presented to Council);
- Cost implications were discussed and whether water affordability has been considered (Staff confirmed that various options will be reviewed prior to decisions being made);
- Discussions were held around ensuring ditches throughout the community are not deemed as fish habitats (Staff clarified that the City

cannot establish what regulations apply to the ditches and watercourses, but that City staff and provincial staff are aware of the shared interests between the agricultural and environmental uses of the water and will need to balance the priorities);

- Discussions were held around the impacts from the most recent atmospheric river which caused damage to farms and their winter crops as a result of three pump stations being turned off (Staff confirmed that there was vegetation backup which clogged the pump stations so the Standby crews attempted to free up the blockages. Unfortunately, the blockages could not be cleared, and the last resort was to turn off the pumps in an effort to reduce the impacts of damage and pump failure in the future. Staff confirmed that modifications were made to other pump stations to reduce the impacts on the ones that had to be turned off);
- The question was raised around what the policy is for a plugged culvert (Staff confirmed these concerns are actioned on a priority basis); and
- A suggestion was made for the City to review potential opportunities to hire private contractors to provide support for cleaning and keeping the screens clean for pump stations (Staff confirmed that this could be an item to review; however, funding would also need to be considered).

** Cllr Evans exited the meeting at 11:33 AM*

5.4 Proposed Soil Bylaw – Repeal and Replacement

A. Seed, Engineering Technologist, provided an overview of the new proposed soil bylaw, outlining the proposed changes and rationale, and sought feedback from the Committee forming a part of the minutes as **Attachment 3**.

The Committee participated in a discussion with the following main themes noted:

- Support was given for the changes proposed in the revised bylaw;
- A comment was brought forward regarding the authorized hours of operation for soil deposit/removal activities further noting most road repair activity occurs after 5PM in an effort to reduce the impact on local traffic, making it difficult to receive recycled road materials (Staff confirmed rural areas have minimal lighting so the City encourages activity and movement during the day); and

- A question was raised whether a Pitt River Quarry levy would be reviewed in response to the road degradation and the increased maintenance requirements in the area.

It was **MOVED** and **SECONDED** THAT the Agricultural Advisory Committee:

- A. Supports the changes outlined in the new Soil Bylaw as presented at the November 14, 2024 AAC meeting.

CARRIED

5.5 Farm Survey Finalization

M. Baski, Manager of Agriculture & Environment, opened roundtable discussion to finalize the details on the Farm Survey which will be distributed in January 2025 including an on table handout forming a part of the minutes as **Attachment 4**.

The Committee participated in a discussion with the following main themes noted:

- The suggestion was made to add the question whether your farmland ever floods and for how long;
- Suggestions were made to use the survey to include information and links to resources for farmers such as links for reducing green house gas emissions; and
- A recommendation as made to ask whether the farm is a part of any associations which are beneficial resource for farms/farmers.

5.6 AAC Application Tracker

M. Baski, Manager of Agriculture & Environment, shared the AAC Application Tracker, there were no updates at this time.

5.7 AAC Action Items

M. Baski, Manager of Agriculture & Environment, shared the AAC Action Item Tracker, there were no updates to share at this time.

6. **ROUNDTABLE**

The Committee participated in a roundtable discussion, there were no motions or recommendations put forward.

** L. Kemper exited the meeting at 12:08 PM*

7. **ADJOURNMENT**

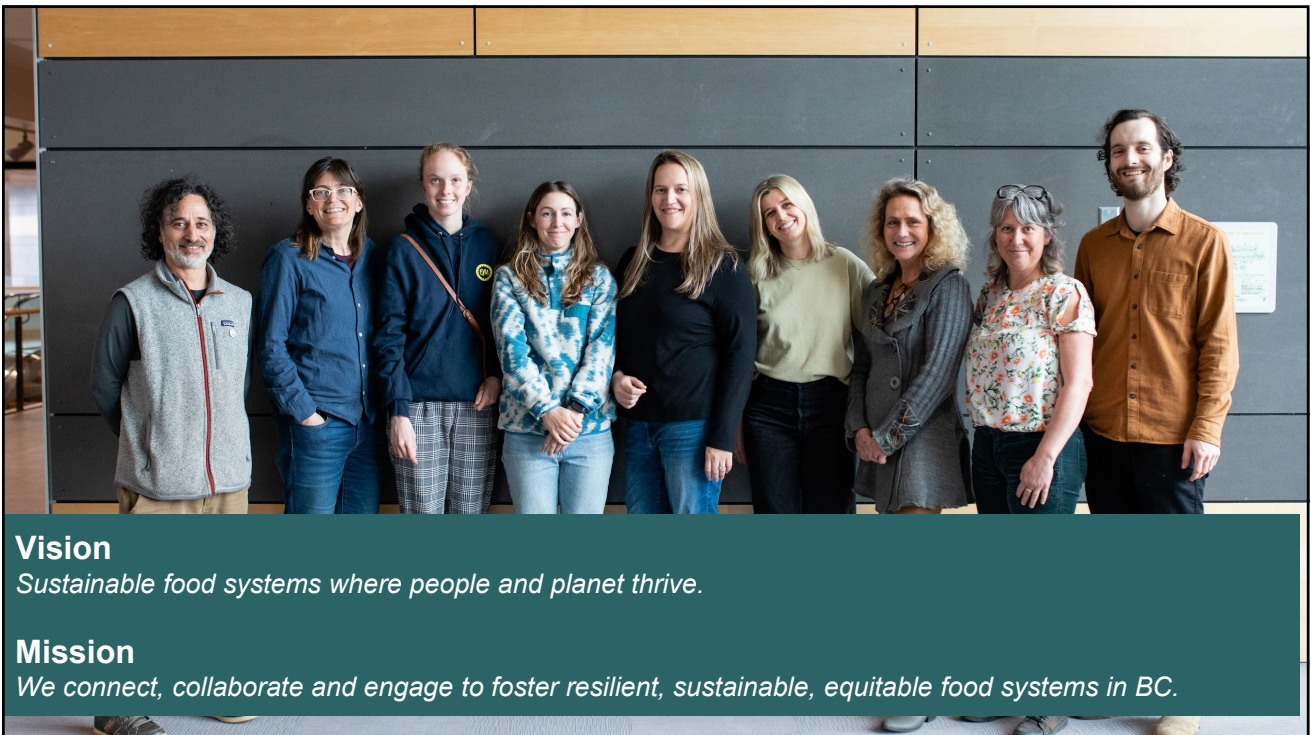
The meeting was adjourned at 12:14 PM

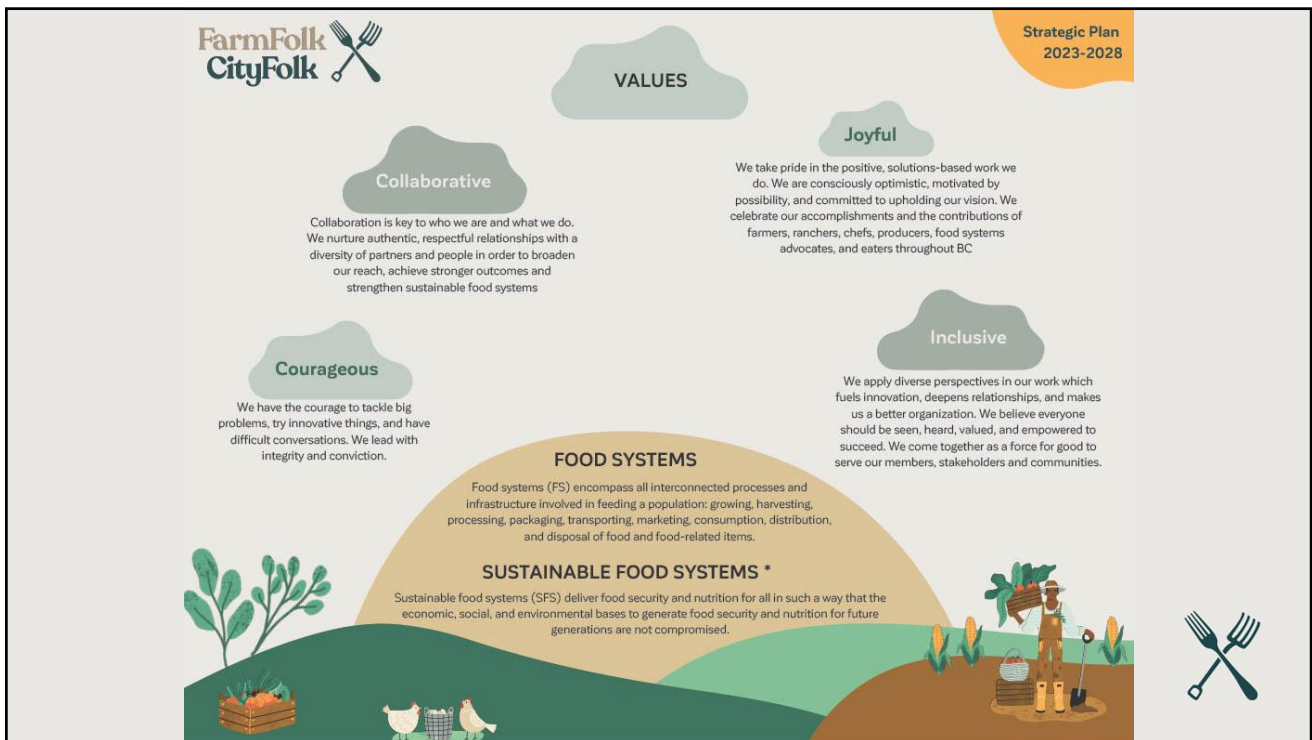
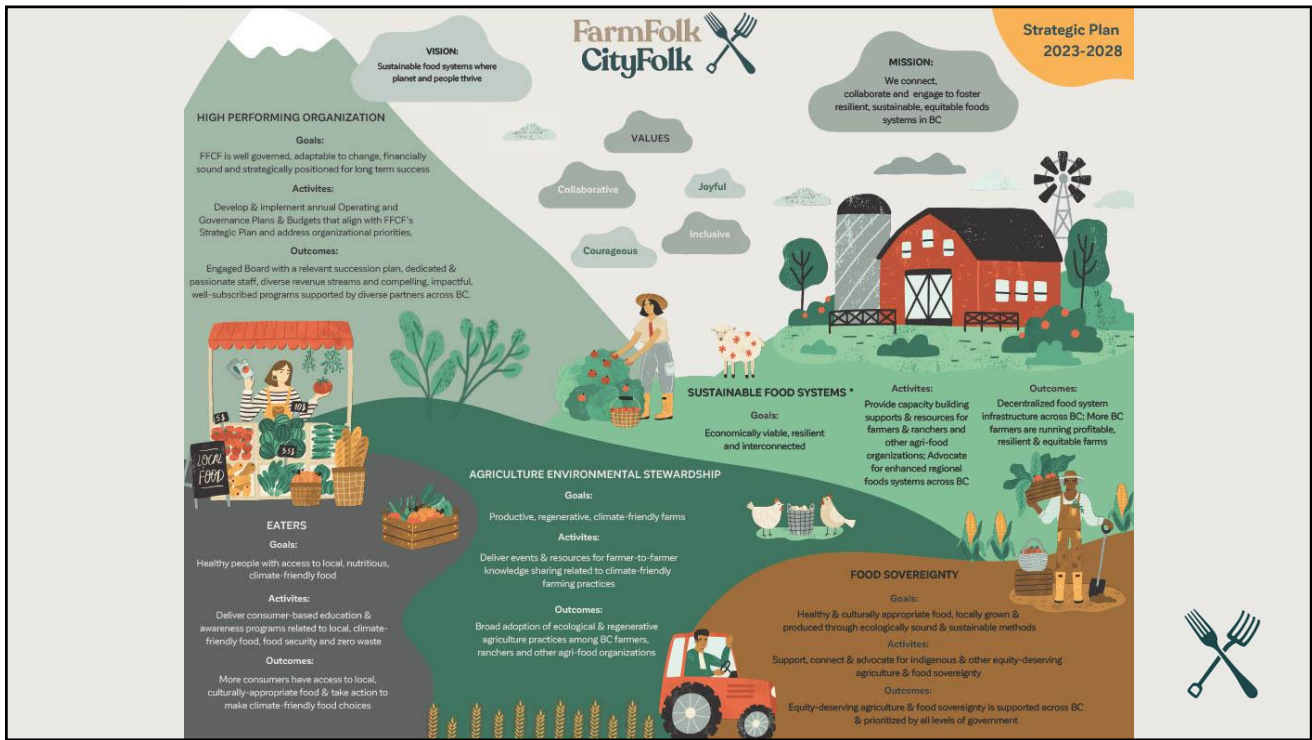
The next ***Agricultural Advisory Committee*** Meeting is scheduled for ***February 13, 2025***
at ***10:00 AM.***

Certified as correct:

Tatiana McCaw,

Administrative Services Supervisor





CLIMATE SOLUTIONS THROUGH FOOD SYSTEMS

B.C. food lands are transformed to provide climate solutions—reducing agriculture emissions and sequestering carbon—while offering co-benefits of local food production, biodiversity protection, and climate resilience.

Supporting Farmers & Ranchers

Engaging Eaters



Influencing Policy



Engaging Eaters

- Our Engaging Eaters initiative connects with people across BC to inspire, educate, and share stories that encourage making climate-friendly food choices.
- Through impactful storytelling and engagement online and by interacting with folks in person, we start meaningful conversations, share practical tips and resources, and motivate people to take action.
- Last year we reached over 25,000 consumers through our Engaging Eaters content



Supporting Farmers & Ranchers

Our Supporting Farmers & Ranchers initiative involves Field Days (in person and virtual) as well as production and distribution of videos highlighting farmers in BC actively using cover cropping, rotational grazing, nitrogen management and other BMPs in their farming practices.

Recent partner farms include Covert Family Farms, Green Fire Farm, Lentelus Farms, Lost Savanna Farm, Sage and Solace Farm, Thistle Farm, LH Willms Farms as well as ReFeed Farms and Virasat Farm.

“Cover cropping is really important in our management practices, there are so many benefits from cover-cropping from erosion management to gaining nitrogen, to habitat and forage for wildfowl and beneficial insects. There’s just too many good things to say about cover cropping.”

— Dave Semmelink, Lentelus Farms



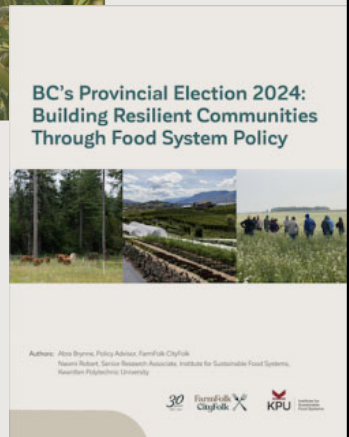
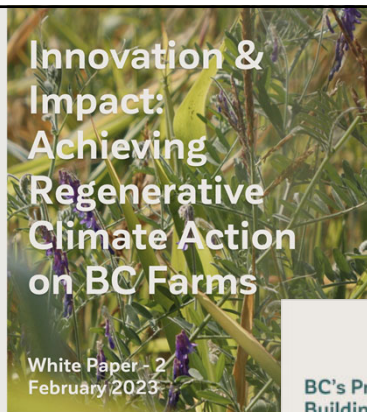
Influencing Policy

As part of our Influencing Policy initiative, we collaborated with KPU’s Institute for Sustainable Food Systems (ISFS) to co-author a White Paper entitled Innovation & Impact: Achieving Regenerative Climate Action on BC Farms.

This White Paper is a follow-up to our White Paper #1, entitled Leadership and Leverage: Political Opportunities for Climate Mitigation in BC Agriculture.

We also released a Policy Brief, in collaboration with KPU, ahead of the 2024 Provincial Election, highlighting key Food System Policy opportunities in BC.

Both White Papers and our Policy Brief can be found on our website: farmfolkcityfolk.ca



Diversity and Inclusion

Food Sovereignty

Part of our Strategic Plan is to support Food Sovereignty in BC, and that is why we have been developing the Elevating Indigenous Agriculture and Food Sovereignty project.

This initiative focuses on amplifying Indigenous agriculture and food sovereignty in the Vancouver, Coast & Mountains region as a pilot project for understanding a path for Indigenous reconciliation on foodlands throughout the province.

Engaging Diverse Eaters

Fare Farms Initiative

- Together, we created a 4 part video series that documented the recent growing season

Iyé Creative

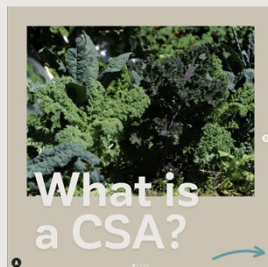
- Together, we conducted a pilot growing initiative of crops identified as high demand but hard to access locally including cowpeas (black-eyed peas), amaranth, and chickpeas.



Strengthening CSAs

Our Strengthening Community Supported Agriculture program elevates and drives the expansion of Community Supported Agriculture (CSA) and other direct-to-consumer sales initiatives across the province.

Our CSA Map features over 150 CSA & direct-to-consumer farmers across BC and sees annual engagement of over 25,000 visits.



Community Farms

We support a number of Community Farms in BC, including the Lohbrunner Community Farm Co-op in Langford (owned by FFCF) and Glen Valley Organic Farm Co-op in Abbotsford. We are actively pursuing federal and provincial policy opportunities to ensure BC's farmland is used for farming & food production and not speculation - stay tuned!



Feast of Fields

*Feast
OF
Fields*

Largest annual local food celebration in Canada.

Celebrates the connection between farmer, chef & eater, field & fork and farm folks & city folks





Food Systems & Local Government

- Local governments have creative options for addressing the current and long term food needs of citizens.
- Water, soil fertility, transportation, zoning, business licences are some of the means that can be leveraged to bolster a community's food security and resilience.



2. Policy Landscape – The Role of Government in Food Policy

Where Food Systems and Local Government Coalesce

Sectoral Responsibilities of Municipal Government in British Columbia

			Responsibility	Access	Economics	Literacy
Social Development	Health	Hospital / Health Care	PT			
		Hospital Capital	PM			
	Social Services	Public Health	PM			
		Social Assistance	PT			
	Housing	Social Housing Assistance	PM			
		Immigrant Settlement	PT			
	Local Democracy	Regulations	M			
		Public Consultation & Equity	PM			
	Public Safety	Managing Local Elections	M			
		Police	PM			
Fire Protection		M				
Ambulance Services		PT				
Emergency Response		PM				
Highways, Primary Road Systems		PT				
Environmental Sustainability	Transportation	Urban Streets	M			
		Rural Roads	PT			
	Public Transit	PM				
	Road Lighting Systems	PM				
	Airports	FM				
	Harbours	FM				
	Air Quality	PT				
	Environment	Drinking Water Quality Standards	PT			
		Water Supplies	M			
		Sewers & Storm Drains	M			
Wastewater Treatment		M				
Land Use Planning & Development	Garbage Removal & Disposal	M				
	Planning & Zoning By-laws	M				
Economic Well-being	Finances & Taxation	Preservation of Agricultural Land	PT			
		Property Assessment	PT			
	Preparation, Approval & Auditing of Budgets	M				
	Borrowing Approval	PM				
	Local Economic Development	Economic Development	All			
Community Income Generation	NA					
Poverty Reduction Programs	FP					

Figure 2: Local government and food systems. Adapted from the *Guide to Municipal Institutions in Canada*, FCM.¹⁵

Working with Local Government on Food Policy: A toolkit for civil society

City of Pitt Meadows - Agriculture Powerhouse



- 78% of land in Pitt Meadows is agricultural land
- Pitt Meadows has some of the richest agricultural land in Canada, from dairy production to cranberries & blueberries to nursery stock and greenhouse crops.
- Pitt Meadows ranks sixth amongst BC's municipalities in terms of agricultural production and contributes to 20 percent of BC's overall blueberry production.



City of Pitt Meadows - 2024 UBCM Resolutions



- **NR76 – School Tax Exemption** - Reforming the School Tax Exemption policy would provide a financial incentive to farm or lease agricultural land, as Farm Classification would be required to receive the school tax exemption.
- **NR77 – Unfarmed Land Tax** - The proposed Unfarmed Land Tax would tax land that is within the Agricultural Land Reserve (ALR) that could be farmed, but that is not being farmed due to land speculation. It is intended to encourage farming in the ALR by providing a financial incentive to farm the land or lease it for farming.
- **NR92 – Minimum Income Requirements for Farm Classification** - B.C. has one of the lowest income thresholds to achieve Farm Classification in Canada. Raising the threshold will discourage those who are using farmland primarily for lifestyle reasons and are obtaining Farm Classification for solely the tax benefit.



Opportunities for Collaboration

- **Farmer Field Days** - Educational & Interactive opportunities related to climate-friendly farming practices; focussing on cover crops, rotational grazing, nutrient management and other BMPs; or local seed production & resiliency
- **Consumer Workshops & Events** - Immersive & hand-on opportunities at local farms or farm-to-fork restaurants to engage consumers in where their food comes from, how it is grown & the importance of sourcing and eating local products purchased direct from nearby farms.
- **Capacity-Building Supports & Resources for Farmers & Ranchers** - In support of profitable, economically viable farms, long-term tenure, sustainable practices and decentralized food system infrastructure across BC



QUESTIONS?



Thank You!

visit us at farmfolkcityfolk.ca

Advocacy items from the AVS:

Strategy 1.1: Advocate to other levels of government for policies and regulations that support and stimulate productive stewardship of the agricultural land base. (short-term)

- ☑ Advocate to BC Assessment for opportunities to better match tax rates with farmland production activities (e.g., higher BC Farm Tax Status minimum thresholds; changes to the application of the school tax on inactive farmland; a vacant crop tax), to help prevent land speculation.
- Advocate to the ALC and AF for increased provincial resources to support enforcement of provincial regulations in the ALR, including the administration of the ALC Act.
- Advocate to Federal and Provincial agencies to streamline processing requirements to obtain temporary farm workers and to construct temporary farmworker housing.
- Advocate to Federal and Provincial agencies that any loss of farmland for infrastructure projects (e.g., rail, roads, other) must provide benefits to the wider agricultural community.

Strategy 2.1: Provide safe and reliable drainage infrastructure for farming. (short-term)

- ☑ Advocate to Provincial and Federal government agencies to provide the City and the agricultural community with resources to improve drainage infrastructure, ditch crosssections, maintenance, and upgrades.

Strategy 2.2: Develop an agricultural water study to assess the capacity of the City's drainage system to support irrigation water for agricultural activities. (short-term)

- ☑ Advocate to Provincial and Federal government agencies for opportunities for the City to be able to undertake measures to support irrigation for farmers. For example: managing water levels within the ditch system without becoming an irrigation district.
- Advocate to the WLRS regarding the need to simplify, streamline, and hasten the water licensing program for agricultural users, as well as consider the feasibility of an Agricultural Water Reserve.

Strategy 2.3: Plan for future development and improvements of rural roads with consideration for needs of agricultural users and to reduce conflicts. (long-term)

- Advocate for traffic improvements and supporting projects that divert traffic away from rural areas.
- Advocate to TransLink to update the Transport 2050 Plan to acknowledge and better manage the impacts of commuter/increased population traffic around agricultural lands.

Strategy 3.3: Support farm operators and labourers in mental health and wellbeing, networking and succession planning. (medium-term)

- ☑ Work with the agricultural sector to consider reviving the Pitt Meadows Farmers Institute, possibly in conjunction with the Maple Ridge agricultural community. The structure of this group would allow for producers to connect to one another as through a supportive community group, and the group could play an advocacy role to various levels of government.

Strategy 5.2: Support food system literacy throughout the community. (medium-term)

☑ Explore opportunities to develop relationships and learning opportunities among School District 42, post-secondary institutions, and the agricultural community. This could involve assisting schools with obtaining Farm-to-School BC and Agriculture in the Classroom grants through letters of recommendation, or an indication of matching or in-kind support. This could be done with a revived Pitt Meadows Farmers Institute and may include advocacy to expand on agricultural curriculum.



Repeal and Replacement Proposed Soil Bylaw

Agricultural Advisory Committee Meeting



Purpose

- Overview of the proposed new soil bylaw
- Highlight key changes
- Seek committee feedback
- Propose a recommendation of support from the Agricultural Advisory Committee



Background

- The City regulates soil deposit/removal through Bylaw No. 2593, 2013.
- Regular review ensures relevance to current conditions and legislative changes.
- Identified in Engineering's 2024 Business Plan



Review Process

- Review of current Bylaw
- Data Collection
- Interdepartmental consultation
- Full repeal and replacement of the bylaw.
- Consultation with external agencies



Key Changes

- Revised and new Definitions
- Agricultural Land Reserve Changes
- Application Process, procedures and authorizations
- Fees, Fines and Enforcement
- Performance Standards



Definitions

Revised Definition:

***Soil** means clay, silt, sand, gravel, cobbles, boulders, peat or other substance of which land is naturally composed, or any other combination of these substances.*

Soil means clay, peat, silt, sand, gravel, cobbles, boulders, **Topsoil** or other substance of which land is naturally composed, down to and including bedrock, but does not include **Other Material**;

Added Definition:

Topsoil means the upper portion of soil, usually dark colored and rich inorganic material, measured from the surface to a depth of 0.30 m;



Agricultural Land Reserve (ALR)

7.1 No person will Deposit Soil on, or Remove Soil from, lands within the City unless:

- a) that person has been authorized to undertake the Deposit or Removal, as applicable, by a Permit; or
- b) that person does not require a Permit to undertake the Deposit or Removal pursuant to section 9 of this Bylaw
- c) that in the ALR the person is compliant with the ALC Act and ALR Regulations, regardless of whether a City Permit is required.

9.3 For land within the ALR, Soil Deposit or Removal that is not a permitted use or considered an Exempted Activity as defined by the ALR Regulations, no exemption will apply.



Permit Exemptions

Current bylaw: Exempted deposits up to 50m³ annually

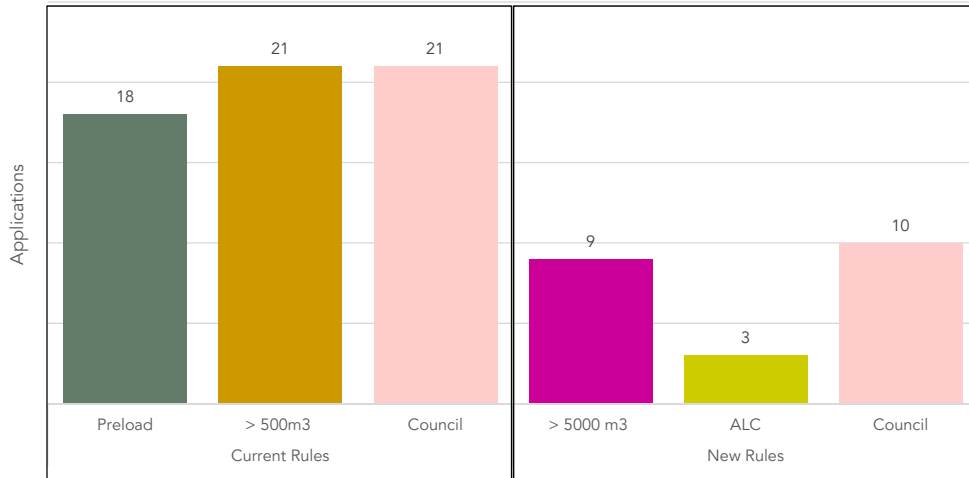
New bylaw: Exemption based on property size (1m³ per 100m²).

Zoning	In the ALR	Parcel size (m ²)	CURRENT Allowable Volume (m ³) w/o permit	NEW Allowable volume (m ³) 1m ³ per 100m ²
I-1	N	21,650	50	217
R-4	N	742	50	7
RM-2	N	25,798	50	258
R-4	N	1,898	50	19
A-1	Y	96,242	50	962
A-1	Y	20,000	50	200



Council Authorization Changes

Soil Applications 2019-2022
Analysis based on current vs new Bylaw regulations

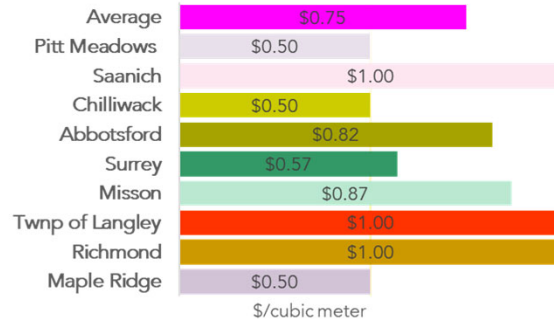


Application Requirements and Process



Permit Fees and Road Levies

Type of Application	Existing Bylaw	New Bylaw
New	\$250	\$500 (if < 5000m ³) \$750 (if ≥ 5000m ³)
New with ALC Application	\$750	\$750
Renewed	\$100	\$350
Modified	\$100	\$200



Enhanced Enforcement and Fines

14.4 If the security deposit is not sufficient for the City to rectify any contravention or non-compliance with the Permit, this Bylaw, or any other City bylaw relevant to the Removal of Soil or Other Material, or Deposit of Soil that is the subject of the Permit, the Owner of the parcel will pay any deficiency to the City upon written notice by the City, within seven (7) days of such notice being made by the City. **Any charge or rate imposed or payable pursuant to this Bylaw that remains unpaid on December 31st of the year in which such charges have been imposed or payable will be deemed to be taxes in arrears in respect of the property pursuant to the Local Government Act.**

18.3 Dirt, mud, and debris resulting from a Removal or Deposit operation which is tracked onto Highways so as to cause a hazard or a nuisance must be removed on a daily basis, or as directed by the Director. **Should the Permittee fail to do so, the City may direct others to perform this work and the cost, plus a 30% administration fee, will be the responsibility of the Permittee.**



Administration and Performance Standards

The standards set out in this Schedule B apply to all Soil Deposit and/or Removal activities, including activities exempt from Permit requirements.

SCHEDULE B: PERFORMANCE STANDARDS

The standards set out in this Schedule B apply to all Soil Deposit and/or Removal activities, including activities exempt from Permit requirements.

Adjacent Property

1. The activities will not encroach upon, undermine or physically damage any public right-of-way, public or third party infrastructure, or natural or tree protection covenant areas.
2. Persons who, in the course of the activities, cause, or allowed to be caused, any damage to drainage facilities, watercourses, utilities, natural or tree protection covenant areas, or Highways must repair the damage to the satisfaction of the Director at their own cost.

Drainage and Watercourses

3. The activities must not, in any way, interfere with the hydrological function and established above or below ground drainage pattern or capacity of any adjoining or reasonably adjacent properties and must not cause the groundwater table to rise on the subject property, or adjoining or reasonably adjacent properties, so as to cause flooding of those properties or malfunctioning of any private sanitary system.
4. All drainage facilities, watercourses, and ground water aquifers must be kept free of silt, clay, sand, rubble, debris, gravel and any other matter or thing originating from any of the activities.
5. No streams will be altered or diverted, unless such alteration or diversion is in accordance with the Water Sustainability Act, S.B.C. 2014, c. 15.
6. Floodplain capacities and storage volumes must be maintained at all times.

Wells and Sewage Disposal Systems

7. The activities must not occur over wells or sanitary disposal systems.

Environmental Protection

8. Damage to areas identified for environmental protection under Environmental Laws or other Applicable Laws that results from the activities must be repaired or restored.

Topsoil

9. Soil or Other Material must not be placed on the existing Topsoil in the area to be filled, unless the Owner or Applicant has provided the Director with a report from a Qualified Professional providing justification.
10. Topsoil must not be removed from lands within the City unless such use is a permitted use of the parcel, as defined in the Zoning Bylaw, or such

Soil or Other Material must not be placed on the existing Topsoil in the area to be filled, unless the Owner or Applicant has provided the Director with a report from a Qualified Professional providing justification



Next Steps

- Feedback from the Agricultural Advisory Committee (AAC).
- Final bylaw to be presented to Council for first reading in the coming months.



QUESTIONS



Annual Farming Survey 2025

Please take some time to fill out this survey to help monitor how the Agricultural Viability Strategy is moving towards its goals of:

1. Protecting farmland for farming
2. Managing infrastructure assets to ensure they are well-functioning for agriculture and supported through thoughtful decision-making
3. Supporting the economic viability of the agriculture and agri-food sector
4. Adapting to future challenges by adopting new technology, embracing innovation and becoming resilient to climate change
5. Helping the community support and be proud of agriculture in Pitt Meadows

To complete this survey online, please visit the Agriculture page on the City's website. We are planning to run this survey annually to monitor the progress of the Agricultural Viability Strategy. **Please complete the survey by February 15, 2025.**



Q1. How many acres of your farm is within the Agricultural Land Reserve?

Q2. How many acres of ALR land on your farm are in crop production and/or used for livestock pasture/grazing (*Numerical answer only*)

Q3. What are you farming/producing, with approximate percentages, if multiple products?

Add flooding question

Q4. Do you have access to enough water annually to irrigate and run your operation?

- Always Through most of the growing season
 Sometimes, but not when I need it most Never

Q5. Do you use any of the following alternative water access methods:

- Rainwater collection tanks Dugouts
 Reclaimed water Municipal water
 None of the above

Other: _____

Q6. The current conditions of roads and flow of traffic in Pitt Meadows is sufficient for agricultural vehicles.

- Strongly agree Agree
 Disagree Strongly disagree

If "Disagree" or "Strongly disagree" go to Q6a. if "Strongly agree" or "Agree" go to Q7.

Q6a. Please let us know the issue and location below:

- Road speeds (e.g. equipment can't be moved due to speed minimums, speeding non-farm vehicles creating hazards)
 Road quality (e.g. potholes, grading, material)
 Road size (e.g. lack of shoulder, too narrow)
 Conflicts with non-agricultural users (e.g. bikes, passenger cars)
 Inadequate signage (e.g. stop sign, yield sign, agricultural priority)
Other: (please specify) _____

Location(s): _____

Q7. What percentage of your product is aggregated, graded, and/or processed on farm or at a local (within Pitt Meadows) facility?

(Numerical % answer only)

Q8. What percentage of your product is sold locally? (farm stand, direct to consumer, grocers in Pitt Meadows)

(Numerical % answer only)

Q9. Do you sell any product at the Pitt Meadows Farmers Market?

- Yes No

Q9a. Why or why not?

Q10. Does your farm have a succession plan?

- Yes, written Yes, verbal In progress No

Q10a. If not, what do you find is the biggest challenge with succession planning?

Q11. Does your farm have an emergency preparedness plan?

- Yes In progress No

Q12. Have you undertaken in any on-farm projects to adapt to climate change or reduce GHG emissions?

- Yes In progress No

(if "Yes" or "In progress" go to Q12a, if "No" go to Q12b)

Q12a. Please specify the type of project(s) undertaken and the year they began:

<i>Project Type</i>	<i>Year</i>
Ex. Cover cropping	

Q12b. If not, are you interested in participating in a project to reduce GHG emissions on your farm?

- Yes No Maybe; depends on what it is

Q13. Have any biodiversity or riparian enhancement projects been undertaken on the farm?

- Yes In progress No

(If "Yes" go to Q13a, if "No" go to Q13b)

Q13a. Please specify the type of project(s) undertaken and the year they began:

<i>Project Type</i>	<i>Year</i>
Ex. Protected nesting tree	

Q13b. If not, are you interested in participating in a project to enhance biodiversity or riparian areas on your farm?

- Yes No Maybe; depends on what it is

Q14. Do you have an Environmental Farm Plan?

- Yes No

Q14a. Is there a particular reason why or why not you do or don't have an Environmental Farm Plan?

Q15. Have you collaborated with any of the following organizations for on-farm projects? (Received funding, guidance, or input)

- Delta Farmland and Wildlife Trust Investment Agriculture foundation
 Farmland Advantage Ducks Unlimited
 Pitt Waterfowlers ARMS
○ Other: (Please Specify) _____

Q16. Is your farm using any waste diversion strategies to prevent waste from going to the landfill (e.g. hazardous waste drop-off, wood waste chipping on-site, composting)?

Yes No

Q17. Do you have any problems or concerns with invasive species on your farm? Please describe.

Q18. Do you have any wildlife management concerns on your farm? Please describe.

Q19. The residential community of Pitt Meadows is supportive of agriculture.

Strongly agree Agree Disagree Strongly disagree

Q20. Any other comments regarding agricultural viability in Pitt Meadows?

Q21. Are you aware of the BC Premises Identification program, which is an important tool for protecting the health and safety of your livestock?

Add Question re: member organizations

Add Resource links

Please consider providing your email address below so the City can communicate farm-related information to you directly.

Email address: _____

Thank you for your time in completing the survey.

Hard copy responses can be returned to City Hall before February 15, 2025, to the attention of Michelle Baski, Manager – Agriculture & Environment.