

***Disclaimer: These minutes were prepared as a reasonable summary of the essential content of this meeting, not as a transcription.***



**Minutes of the Community Support & Accessibility Committee Meeting**

**October 28, 2024, 10:00 AM**

**Meadows Room**

**12007 Harris Road, Pitt Meadows, BC V3Y 2B5**

**Voting Members:** Councillor Hayes  
Councillor O'Connell (Chair)  
M. Peretta, Ridge Meadows Seniors Society  
K. Rogge, Maple Ridge Pitt Meadows Community Services  
A. Sanchez, Fraser Health  
C. Shearme, Community Network - Maple Ridge, Pitt Meadows & Katzie First Nation  
K. Sullivan, School District No. 42

**Regrets:** J. Armstrong, Fraser Valley Regional Library  
E. Crowdis, Maple Ridge, Pitt Meadows and Katzie Seniors Network  
J. Kloosterboer, Emergency Program Manager  
M. Robson, Friends in Need Food Bank

**Staff:** D. Parr, Planner II  
P. Ward, Director of Planning & Development (Liaison)

**Guests:** M. Larson, Mariam Larson Consulting  
K. McLennan, Fraser Health

**Recording Clerk:** R. Costa, Legislative Services Clerk

---

**1. CALL TO ORDER**

Councillor O'Connell acknowledged with respect and gratitude that the City of Pitt Meadows is located on the traditional, unceded territory of ᑭᓴᓴᓴ (Katzie) First Nation who were stewards of this land since time immemorial.

The meeting was called to order at 10:02 a.m.

**2. LATE ITEMS**

None.

**3. APPROVAL OF AGENDA**

There was general consent amongst the Committee to approve the October 28, 2024, Community Support & Accessibility Committee agenda.

**4. ADOPTION OF MINUTES**

There was general consent amongst the Committee to approve the minutes from the May 22, 2024, Community Support & Accessibility Committee meeting as circulated.

**5. NEW BUSINESS**

**5.1 Accessibility Plan Update**

D. Parr, Planner II, introduced M. Larson, Mariam Larson Consulting, who presented the Accessibility Planning Overview, which forms a part of the minutes as **Attachment 1**. Some of the highlights included:

- The importance of recognizing the language variations used in association with people with disabilities;
- Understanding the possible barriers and complexities of disabilities;
- Considerations around the current accessibility features on the City's website (i.e. ability to adjust font size or read-aloud function);
- Considerations for reviewing accessibility standards within the City facilities and reflect on what kind of accommodations and adaptable tools could be used to become more accessible;
- Encouraging City events to have accessibility plans;
- Considerations for doing 'walk-arounds' in Pitt Meadows to hear directly from members of the public about what areas currently lack accessibility; and
- Recommendations to review and consider accessibility requirements for new developments (i.e. installing accessible sidewalks).

The Committee participated in a roundtable discussion with the following main themes noted:

- A discussion was held to consider how the City can widely share the information of a potential accessibility survey to members of the public, which included the following key points:
  - Make use of our online platforms to launch a survey and possibly host a Q&A session with the public to identify key areas needing review for accessibility;
  - Gather feedback from members of the public on the potential businesses with accessibility challenges;
  - It is imperative to have these surveys available online and in paper format;
  - Consider disbursing the surveys in high-traffic areas for everyone in the community to access (i.e. clinics, library, seniors centre, City Hall, food bank, coffee shops, etc.);
  - Consider making the survey accessible in additional languages to ensure it can reach more residents and to investigate whether third party translation applications are compatible with the City's website;
  - The Seniors Network could host an information session as they have an ideal platform to inform and gather feedback from the vast majority of seniors from the community;
  - Consider launching an inventory of community programs, businesses and organizations where the City could share the information;
  - It was recommended to include youth input and the survey should be circulated within student services, child development systems and sports organizations;
- It was noted that local grocers and neighbouring municipalities ceased the production of paper programs and coupons, which created an accessibility barrier to seniors;

- The importance of becoming aware of the high population of people living with dementia was expressed;
- The recommendation was made to encourage community stakeholders to become aware of areas within their own organizations/businesses that could possibly lack accessibility and encourage them to research ways to improve accessibility, including possible grant opportunities;
- Considerations regarding the top priority areas are for the Accessibility Plan;
- Community engagement was identified as a key priority;
- It was noted that accessible parking and accessible sidewalks are areas that often get omitted from new developments;
- A discussion was held to consider reviewing the City's bench policy and give thought to expanding the availability of benches and seating areas near trails and within large facilities;
- It was recommended to look into dementia funding initiatives, as well as the corresponding grants that could be available; and
- The importance of community engagement and feedback on the Accessibility Plan was highlighted.

## **5.2 Updates from Community Outreach Agencies**

Community Outreach Agencies participated in a roundtable discussion providing a verbal update on their individual organizations.

C. Shearme, Maple Ridge, Pitt Meadows and Katzie Community Network provided an update to the Committee. Some of the highlights included:

- C. Shearme has assumed the role of Coordinator for the Community Network; and
- Dancing in the Ridge, is being held on Thursday, November 21, 2024 at the ACT Theatre in Maple Ridge.

M. Peretta, Ridge Meadows Seniors Society provided an update to the Committee. Some of the highlights included:

- The importance of food security to seniors was expressed, as the seniors demographic is large;
- Some key Ridge Meadows Seniors Society statistics were noted:
  - 34,529 low-cost meals were provided between both Maple Ridge and Pitt Meadows Seniors Centres;
  - The Ridge Meadows Seniors Society is working with the Friends in Need Food Bank Society to provide free meals for people that require it (i.e. seniors, caregivers, etc.);
  - The Ridge Meadows Seniors Society received funding through the Maple Ridge Community Foundation for free social meals programs. The lunch program served 95 seniors between both centres and the breakfast program served 120 seniors, with potential to serve an additional 380 seniors by the end of March;
  - The Ridge Meadows Seniors Society worked with Community Services to provide 140 seniors with food;
  - Food has also been provided internally to the volunteers who give their time, approximately 2,400 meals have been provided to volunteers; and
- The Ridge Meadows Seniors Society has recently celebrated their 25<sup>th</sup> birthday.

K. Sullivan, School District No. 42 provided an update to the Committee. Some of the highlights included:

- It was noted that the programs held at the Katzie Health Centre, which includes learning opportunities around literacy and traditional learning, as well as the programs provided through Thomas Haney Secondary, were all greatly attended;
- The following was outlined in regards to School District No. 42's student totals:
  - Elementary Students: 10,000+;

- Secondary Students: 6,500;
- Students with Disabilities: 1,573;
- English Language Learning Students: 1,592;
- The dual-credit, Advanced Placement programs allows high school students to take tuition-free college and university level courses. It gives students the option to take advantage of post-secondary education with the people they trust from their community. The current courses available within the district are as follows:
  - Sports Science and Health Science (Douglas College);
  - Emergency Medical Responders (Justice Institute of BC);
  - Early Childhood Educator (ECE) Assistant;
- School District No. 42 was recently approved by the Provincial government for pre-fabricated additions, which totals 13 additional classrooms; and
- The new Pitt Meadows Secondary School operational capacity is predicted to be up to 1,100 students. Construction is anticipated to begin in spring 2026 and project completion is expected to be in September 2028.

K. Rogge, Maple Ridge Pitt Meadows Community Services provided an update to the Committee. Some of the highlights included:

- Foundry Ridge Meadows has received extended hours;
- The following upcoming events were noted:
  - The Wild Wild West Pub Night to support Alisa's Wish Child and Youth Advocacy Centre is being held on November 9<sup>th</sup>;
  - The Maple Ridge Pitt Meadows Community Services 21<sup>st</sup> Annual Community Silent Auction will be held on November 23<sup>rd</sup>;
  - The Maple Ridge Pitt Meadows Community Services Seniors Christmas Luncheon will be held on December 11<sup>th</sup>; and
- The Maple Ridge Pitt Meadows Community Services Childcare Resource and Referral Program was noted, along with its respective online booking

resource library.

A. Sanchez, Fraser Health provided an update to the Committee. Some of the highlights included:

- Flu vaccinations were encouraged as well as the Covid-19 booster vaccination.

Councillor O'Connell provided an update to the Committee. Some of the highlights included:

- It was noted that 74% of the food from the food bank is successfully going out to clients. Additionally, an estimated 5,000,000 pounds of food has been diverted from going to waste in the last five years.

### 5.3 2025 Committee Calendar

Councillor O'Connell provided an overview of the 2025 Committee Calendar.

The Committee participated in a roundtable discussion, including adjusting all meetings from Wednesday to Monday.

## 6. ADJOURNMENT

The meeting was adjourned at 11:21 p.m.

*The next **Community Support & Accessibility Committee** meeting is scheduled for **November 25, 2024, at 10:30 AM.***

**Certified as correct:**



## Accessibility Planning Overview

Pitt Meadows Community Support & Accessibility Committee  
October 28, 2024

### Principles

- **Inclusion:** Full and equal participation
- **Adaptability:** Evolving concepts
- **Diversity:** Acknowledge individual and intersectional factors
- **Collaboration:** Shared responsibility to promote access and inclusion
- **Self-determination:** Empower to make choices and pursue the lives they wish to live
- **Universal Design:** Meet the needs of all people who wish to interact with the City

#### Consider language...

"person with a disability"  
or  
"disabled person"?

"people with Autism"  
or  
"autistic person"?



**27% (8 million people):**

Canadians age 15+ with one or more disabilities that limited them in daily activities

**22%** have one or more disabilities

Extrapolate to Pitt Meadows:  
5500 people with one or more disabilities

## Definitions

**Disability:**

Inability to participate fully and equally in society due to the interaction of an...

**Impairment:**

Physical, sensory, mental, intellectual or cognitive impairment, whether permanent, temporary or episodic.

+

**Barrier(s) caused by:**

- environments
- attitudes
- practices
- policies
- information
- communications or technologies

+

affected by intersecting forms of discrimination (age + race; gender + colour).

6 in 10 persons experienced barriers related to accessing indoor and outdoor public spaces

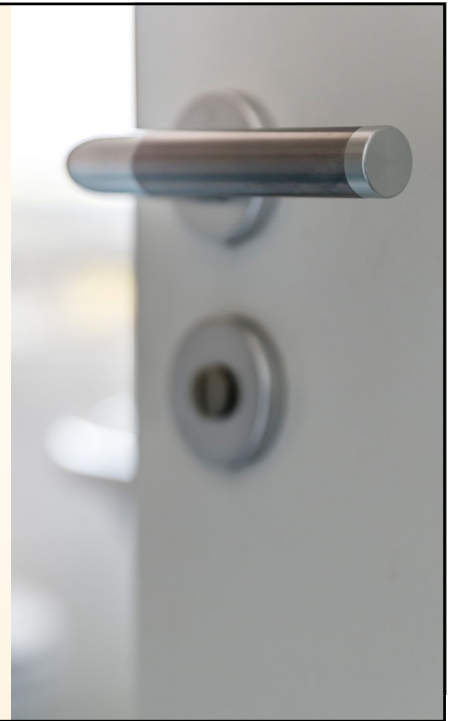
**Top barriers:**

#1: Entrances, exits, sidewalks (56%)

#2: Communication(48%)

#3: Behaviours, misconceptions, assumptions (37%)

#4: Online activities (17%)



## Definitions

**Accessibility:**

All people can take part in their communities through work, play and other daily activities.

[Source: AccessibleBC](#)



### **Most common disability?**

Pain-related: 62%  
of persons w/disability

Flexibility: 40%

Mobility: 39%

Mental-health related: 39%



### **Framework option: Accessibility standards**

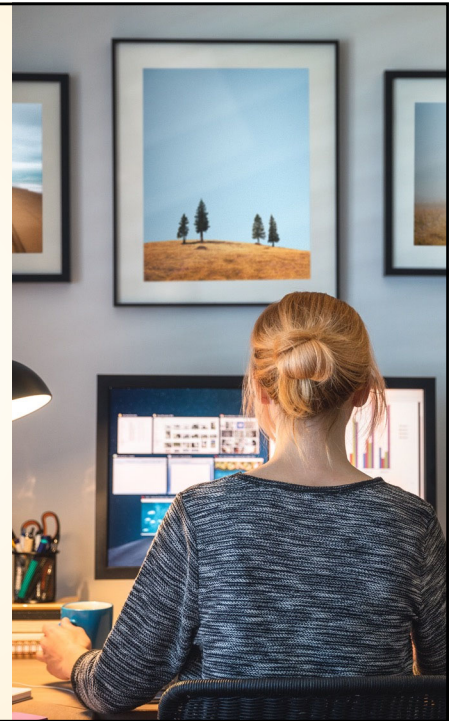
- Employment
- Service delivery
- Built environment
- Information and communications
- Transportation
- Health
- Education
- Procurement



Youth and seniors experiencing an increase in the rate of disability

62% of adults with disabilities were employed

78% of persons without disabilities are employed



## Framework option: Departmental

- **Official Community Plan (2022):** Pedestrian and vehicle circulation, recreational facilities, outdoor spaces and park services, bus stop accessibility
- **Economic Development Strategic Plan (2023):** Wheelchair accessibility to the dike system
- **Housing Needs Report (2022):** More housing options that include accessibility and adaptability considerations to facilitate aging in place
- **Parks, Recreation and Culture Master Plan (2021):** Consider accessibility, inclusion and access when evaluating grant and funding requests and potential facility operations agreements. Consider regular accessibility audits.
- **Transportation Master Plan (2014):** Remove barriers for children, seniors, and people with physical or cognitive disabilities. Consider accessibility to transportation system.

